



**13 Weavers Lane, Oakridge Park, Milton Keynes, Buckinghamshire, MK14 6FQ**

**£550,000 Freehold**

- Located within moments walk of beautiful parkland
- OVERLOOKING STANTON LOW PARK
- CANAL AND RIVERSIDE WALKS MOMENTS AWAY
- Four double bedrooms
- Garage with electric door
- On a private road
- Parking for Three cars
- Very rare to the market
- EPC Rating







**\*\*\*OVERLOOKING STANTON LOW PARK\*\*\* CANAL & RIVERSIDE WALKS MOMENTS AWAY\*\*\* GARAGE & PARKING FOR THREE CARS\*\*\***

This delightful four double bedroom overlooking parkland is located in the sought after location of Oakridge Park. The property is set over two floors, the ground floor offers an entrance hall, cloakroom, spacious living room with patio doors to the rear garden, dining room and kitchen/ family room. the top floor offers master bedroom with ensuite, three further double bedrooms and family bathroom.

The property benefits from a beautifully presented rear garden, single garage with electric doors, driveway for three cars and picturesque views over Stanton Low Park.

## Ground Floor

### Living Room

5.41m x 3.34m (17' 9" x 10' 11")

### Kitchen

4.162m x 3.184m (13' 8" x 10' 5")

### Breakfast Room

3.111m x 2.321m (10' 2" x 7' 7")

### Dining Room

3.111m x 3.0m (10' 2" x 9' 10")

## First Floor

### Bedroom One

3.399m x 2.734m (11' 2" x 9' 0")

### Bedroom Two

4.074m x 2.912m (13' 4" x 9' 7")

### Bedroom Three

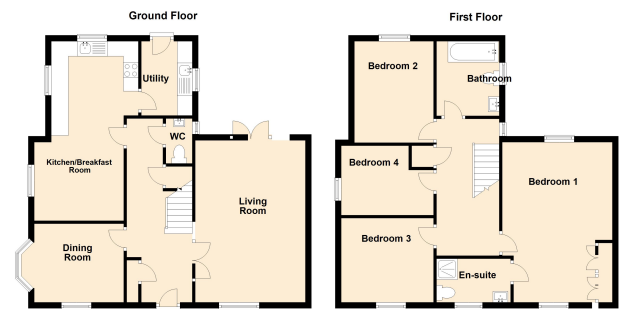
3.249m x 3.000m (10' 8" x 9' 10")

### Bedroom Four

3.249m x 2.321m (10' 8" x 7' 7")

## Disclaimer

Whilst we have endeavoured to prepare our sales particulars accurately none of the services, appliances or equipment have been tested. A buyer should satisfy themselves on such matters prior to purchase. Any measurements or distances mentioned in these particulars are for guide reference only. If such particulars are fundamental to a purchase, buyers should rely on their own enquiries. All enquiries should be directed to Elevation Estate Agents in the first instance.



Floor plans are for layout purposes only. Measurements are approximate and subject to inaccuracies from provided using PlanIt.