



14 Westwick Gardens  
Hounslow, TW4 6LW



Telephone: 02085707900

Email: [gavin@bluestateagents.co.uk](mailto:gavin@bluestateagents.co.uk)





# Westwick Gardens

Hounslow, TW4 6LW

As Sole Agents, Blue Estate Agents are honoured to offer to the market this three-bedroom semi-detached house located in a great location in Hounslow/Cranford. The property benefits from a porch entrance leading to a large through lounge as the front elevation window is bay windowed. Leads to a large extended kitchen and diner which also contains a separate utility room. Ground floor also contains a separate WC and the whole property is double glazed and gas central heated. To the first floor you have three well sized bedrooms, with the second bedroom having built in wardrobes and a large family modern bathroom suite. Outside to the rear you have a good-sized garden leading out to a large out annex building. The outbuilding annex contains a large shower suite and a separate kitchen. Outside to the front you have off street parking for two cars and side access to the rear garden. The whole property is modern throughout and ready to move in.

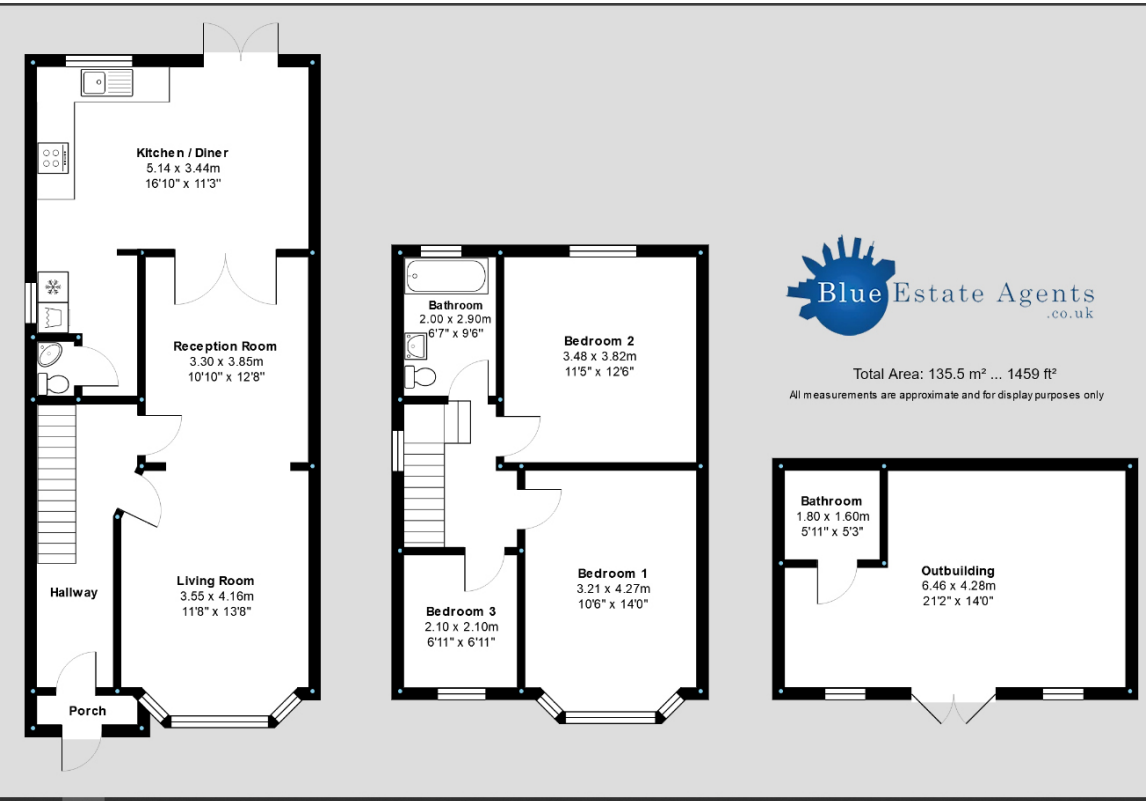
The property is located just off the Bath Road giving great access to the M4 motorway, A40 and A312. There are ample amounts of public transport links and Hounslow West Tube station less than a mile away. The property is located close to Heathrow Airport and allows close proximity to Schools and local amenities.



Contact a dedicated member of staff today to book your appointment







Blue Estate Agents  
315 Vicarage Farm Road, Hounslow  
Greater London  
TW5 0DR