

Moor View Close

Glastonbury, BA6 9TB

COOPER
AND
TANNER



£260,000 Freehold

3 1 1 EPC C

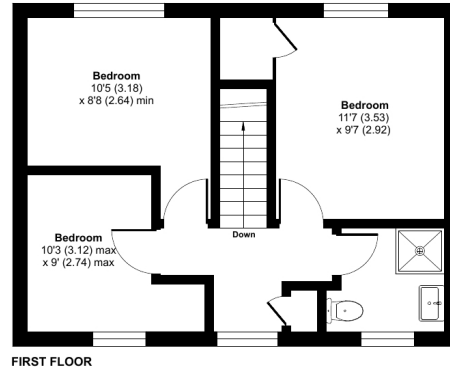
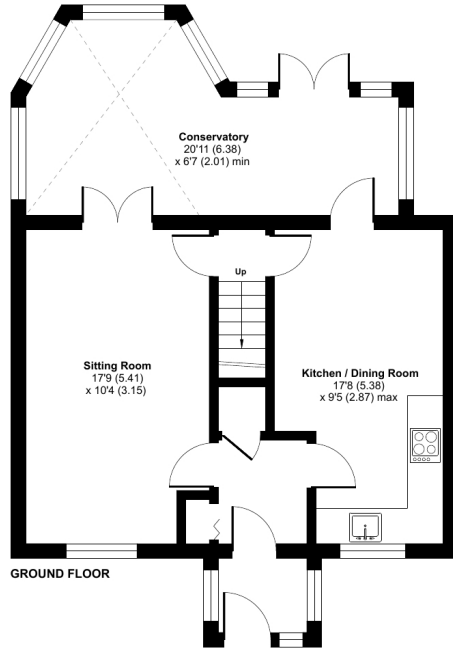
Description

An immaculately presented three bedroom home situated in a corner plot position with off road parking. The accommodation is in good decorative order and features a recently upgraded shower room. There is a sizable conservatory, a well equipped kitchen/diner and a sitting room featuring French doors. Three bedrooms and a contemporary shower room are located on the first floor. The two rear bedrooms face West and the largest bedroom benefits from a built-in cupboard. The walled garden features an extensive sandstone patio area that extends the length of the garden and leads to a pedestrian rear access gate.

Moor View Close, Meare, Glastonbury, BA6

Approximate Area = 1049 sq ft / 97.4 sq m

For identification only - Not to scale



Floor plan produced in accordance with RICS Property Measurement Standards incorporating International Property Measurement Standards (IPMS2 Residential). © ritchecom 2024. Produced for Cooper and Tanner. REF: 1169959



Features

- Off road parking
- Substantial conservatory
- Recently upgraded, contemporary shower room
- Entrance porch providing additional storage
- Within walking distance of village primary school
- Low maintenance walled garden with pedestrian rear access
- Freehold - Council Tax Band B

Local Information

- Council Tax Band B
- Tenure Freehold
- EPC Rating C

GLASTONBURY OFFICE

Telephone 01458 831077

41, High Street, Glastonbury, Somerset BA6 9DS

glastonbury@cooperandtanner.co.uk

**COOPER
AND
TANNER**

Important Notice: These particulars are set out as a general outline only for the guidance of intended purchasers and do not constitute, nor constitute part of, an offer or contract. All descriptions, dimensions, reference to condition and necessary permissions for use and occupation, warranties and other details are given without responsibility and any intending purchasers should not rely on the m as statements or representations of fact but must satisfy themselves by inspection or otherwise as to the correctness of each of them.

