



Built in 2014 is this 4/5 bedroom semi-detached town house, ideally positioned within catchment for all four local grammar schools. The property is offered to the market in an immaculate condition throughout.

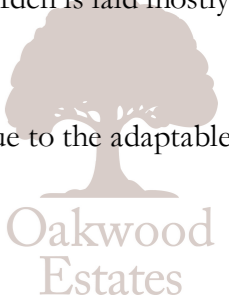
A welcoming entrance hall leads to downstairs cloakroom and study that can be utilised as a ground floor bedroom. At the back of the property is a 23ft living/dining room open plan to a very modern kitchen benefitting from a range of high gloss cupboards and integrated appliances including fridge freezer and dishwasher.


To the first floor is a large 15ft bedroom with en-suite shower room, and an additional reception room enjoying double Juliet balcony to the front, stretching the width of the property.

On the top floor of the house is a second 15ft bedroom with Jack and Jill bathroom and large fitted wardrobes, and there are two further excellent size bedrooms.

Externally two allocated parking spaces can be found directly in front of the property. The rear garden is laid mostly to patio with a small lawn, garden shed and gate for side access.

The property features an abundance of storage throughout and would ideally suit a large family due to the adaptable living accommodation offered across three floors.



-  4/5 BEDROOM SEMI-DETACHED TOWN HOUSE
-  23FT OPEN PLAN LIVING/DINING ROOM
-  MODERN EN-SUITE TO MASTER BEDROOM
-  2 PARKING SPACES TO THE FRONT
-  PRIVATE REAR GARDEN
-  MODERN KITCHEN WITH APPLIANCES
-  11FT STUDY/GROUND FLOOR BEDROOM
-  AMPLE STORAGE THROUGHOUT
-  BUILT IN 2014
-  CATCHMENT FOR ALL 4 GRAMMAR SCHOOLS

					
x5	x2	x3	x2	Y	N
Bedrooms	Reception Rooms	Bathrooms	Parking Spaces	Garden	Garage

External

To the front of the property are 2 allocated parking spaces located directly in front of the house. The rear garden enjoys a high degree of privacy and is laid mostly to patio with a small lawn. There is a useful gate for side access and shed for storage.

Council Tax

Band E - £2,188

Transport Links

NEAREST STATIONS:

- Slough - 1.6 miles
- Langley - 1.9 miles
- Datchet - 2.8 miles

Local Schools

PRIMARY SCHOOLS

St Bernard's Preparatory School
0.1 miles

Ryvers School
0.6 miles

Willow Primary School
0.6 miles

Castleview Primary School
0.8 miles

SECONDARY SCHOOLS

Upton Court Grammar School
0.5 miles

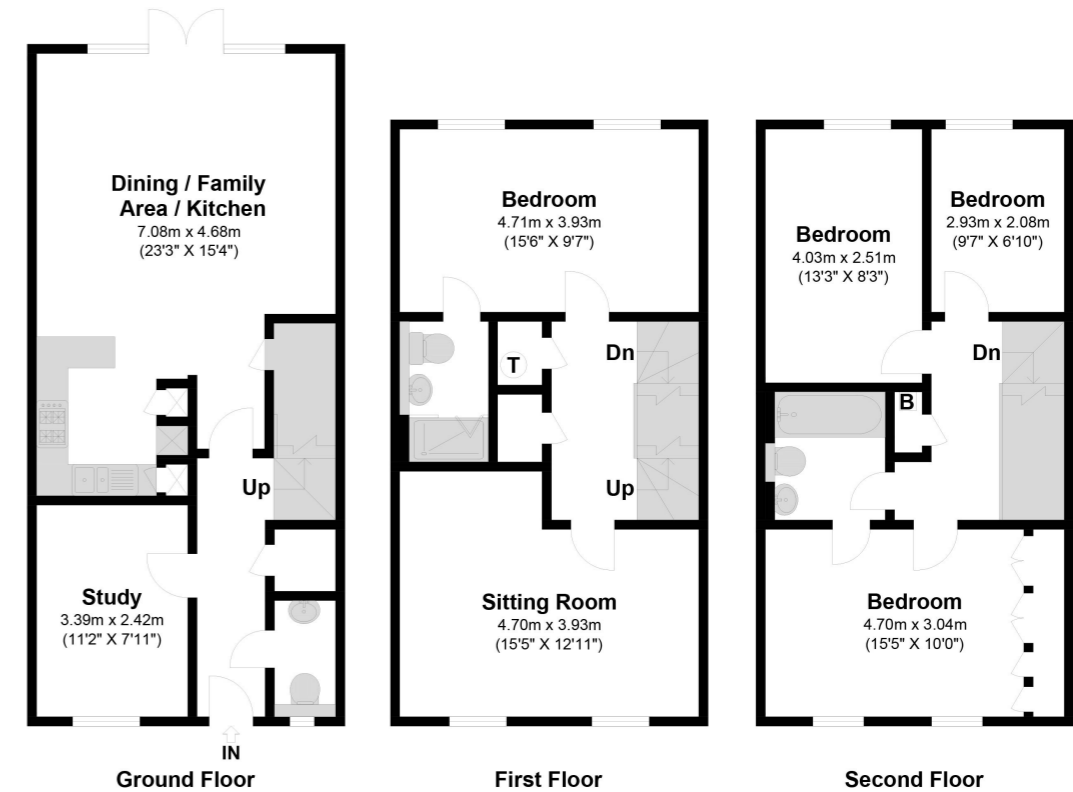
Ditton Park Academy
0.7 miles

The Langley Academy
0.9 miles

Langley Grammar School
1.1 miles



Foxherne
Total Approximate Floor Area
1541.06 Square feet 143.17 Square metres



Illustrations are for identification purposes only, measurements are approximate, not to scale

Prospective purchasers should be aware that these sales particulars are intended as a general guide only and room sizes should not be relied upon for carpets or furnishing. We have not carried out any form of survey nor have we tested any appliance or services, mechanical or electrical. All maps are supplied by Goview.co.uk from Ordnance Survey mapping. Care has been taken in the preparation of these sales particulars, which are thought to be materially correct, although their accuracy is not guaranteed and they do not form part of any contract.

