





15 Elgin Avenue, Ashford, Surrey TW15 1QE
£535,000 - Freehold



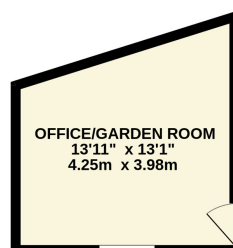
PROPERTY DESCRIPTION

A spacious and well-maintained three-bedroom mid-terrace house, offered with no onward chain and located in a popular residential area. To the ground floor, the property features a modern open-plan kitchen with integrated appliances, flowing into a generous living and dining space. There is also a separate front reception room and a ground floor shower room. Upstairs, the property offers three well-proportioned bedrooms and a large family bathroom. Outside, there is a paved rear garden with a versatile garden room/office, ideal for working from home or use as a hobby space, along with driveway parking to the front. Conveniently positioned for local schools, transport links, and amenities. Viewings are highly recommended

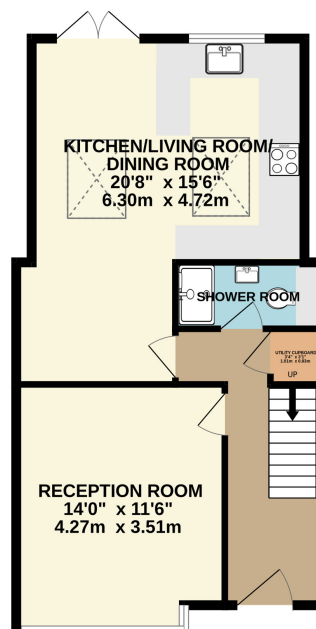
POINTS OF INTEREST

- NO ONWARD CHAIN
- POPULAR LOCATION
- MODERN OPEN PLAN KITCHEN
- OFF STREET PARKING
- OFFICE/GARDEN ROOM
- CLOSE TO LOCAL BUS ROUTES
- CLOSE TO LOCAL SCHOOLS
- IMMACULATELY PRESENTED

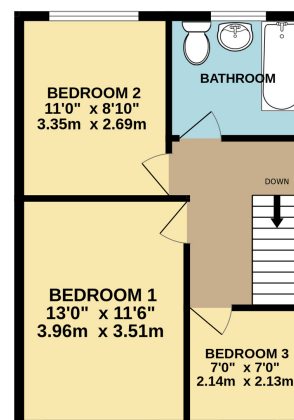




GROUND FLOOR
761 sq.ft. (70.7 sq.m.) approx.



1ST FLOOR
421 sq.ft. (39.1 sq.m.) approx.



TOTAL FLOOR AREA: 1182 sq.ft. (109.8 sq.m.) approx.

Whilst every attempt has been made to ensure the accuracy of the floorplan contained here, measurements of doors, windows, rooms and any other items are approximate and no responsibility is taken for any error, omission or mis-statement. This plan is for illustrative purposes only and should be used as such by any prospective purchaser. The services, systems and appliances shown have not been tested and no guarantee as to their operability or efficiency can be given.
Made with Metropix ©2025