



## **36 The Doultons Octavia Way, Staines-upon-Thames. TW18 2QX**

WELL PRESENTED AND SPACIOUS RETIREMENT APARTMENT IN SOUGHT AFTER DEVELOPMENT IDEALLY POSITIONED FOR STAINES TOWN CENTRE. In good order throughout this well presented one bedroom apartment benefits from a spacious lounge/diner, separate fitted kitchen, large double bedroom and modern shower room. No Onward Chain. Viewings Highly Recommended!

## ROOM DESCRIPTIONS

---

### **Communal Entrance**

With security entry door, stairs to first floor.

### **First Floor**

#### **Entrance Hall**

Light and power points, cupboard housing fuseboard, built-in storage cupboard housing hot water tank. Doors to

#### **Lounge**

Front aspect window, light and power points, two single radiators, TV point. Doorway to Kitchen.



#### **Kitchen**

Rear aspect window, range of fitted units at eye and base level, roll edged worktops, 1 1/2 bowl sink drainer unit, space for cooker and fridge, double radiator, cupboard housing boiler.



### **Bedroom 1**

Front aspect window, light and power points, single radiator, built-in wardrobes.



### **Shower Room**

Double-shower unit, low level W.C, wash hand basin inset to cabinet, tiled walls, tiled floor, light point, extractor.



### **Outside**

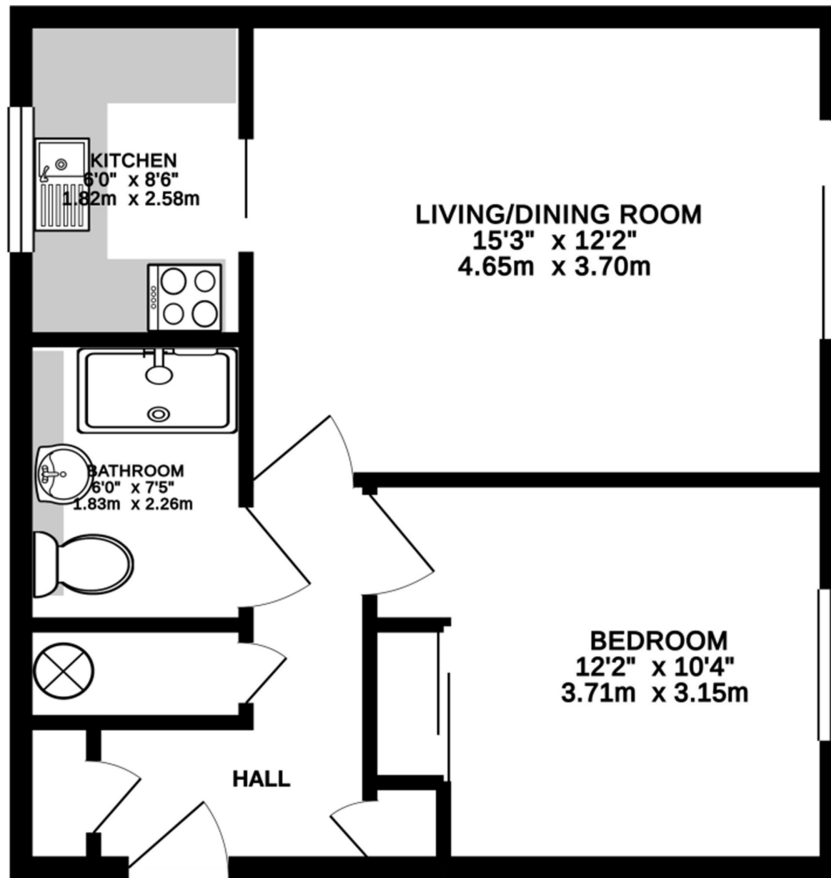
#### **Communal Grounds**

Well-kept communal gardens, residents parking bays.

#### **Communal Residents Room & Laundry**

Residents enjoy access to a Communal lounge with Kitchen facilities and laundry room.

# FLOORPLAN



FIRST FLOOR FLAT

THE DOULTONS, STAINES  
INTERNAL FLOOR AREA (APPROX.) 480 sq ft/ 44.6 sq m

Whilst every attempt has been made to ensure the accuracy of this floor plan, measurement of doors, windows, rooms and any other items are approximate and no responsibility is taken for any error, omission or mis-statement.  
Made with Metropix © 2018.