

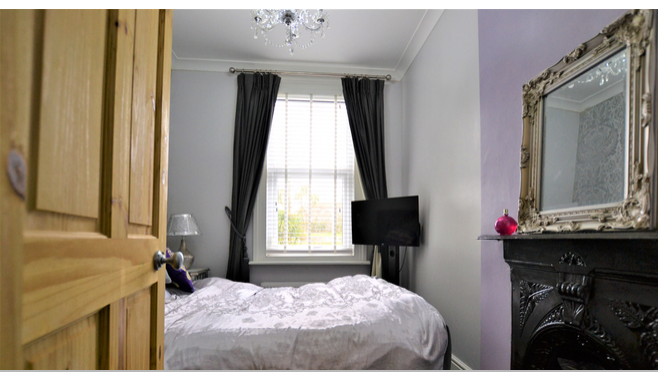
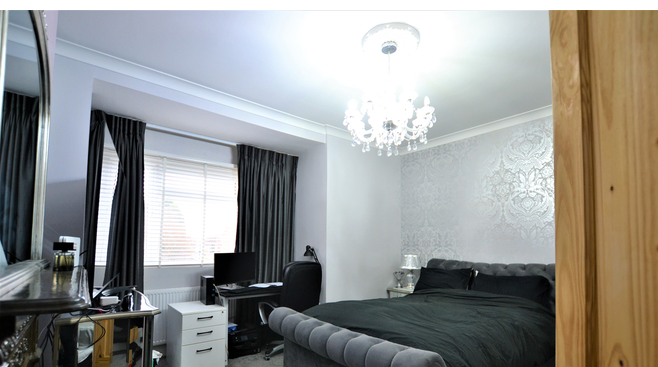


88 Turkey Road, Bexhill-on-Sea, East Sussex,  
TN39 5HE

**£270,000**



- Three Spacious Bedrooms
- Off-road Parking
- Two Separate Reception Rooms
- Extremely Large Rear Garden
- Excellent Additional Potential & Scope
- Convenient & Popular Location
- Close By To Schools & Local Transport Links
- Modern Fitted Bathroom
- Utility Room.
- Viewing Highly Recommended

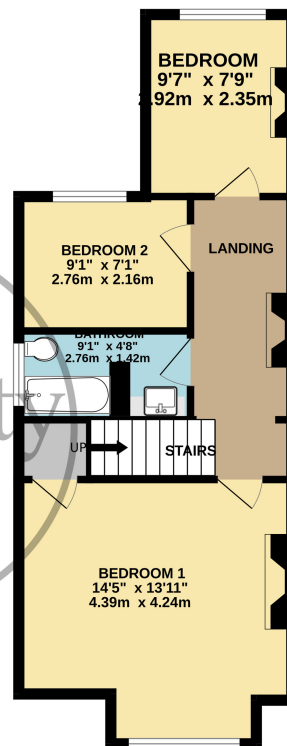
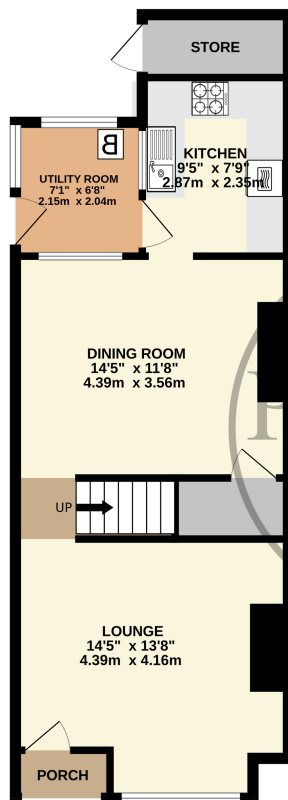






GROUND FLOOR  
537 sq.ft. (49.9 sq.m.) approx.

1ST FLOOR  
456 sq.ft. (42.4 sq.m.) approx.



TOTAL FLOOR AREA : 993 sq.ft. (92.3 sq.m.) approx.

Whilst every attempt has been made to ensure the accuracy of the floorplan contained here, measurements of doors, windows, rooms and any other items are approximate and no responsibility is taken for any error, omission or mis-statement. This plan is for illustrative purposes only and should be used as such by any prospective purchaser. The services, systems and appliances shown have not been tested and no guarantee as to their operability or efficiency can be given.  
Made with Metroplan ©2023

