



Aynhoe Road, London, W14 0QA

**Cow & Co**  
LONDON

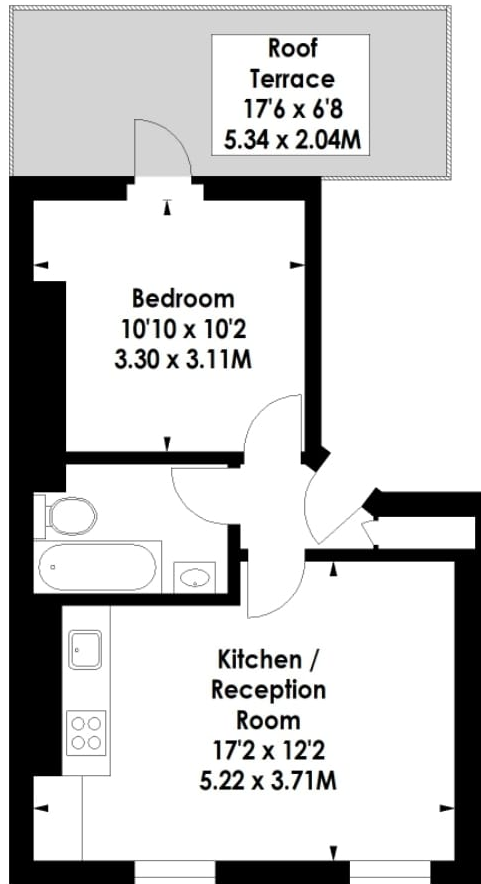


This beautifully presented one bedroom Victorian conversion flat benefits from a 17'6" private South-East facing roof terrace. The light filled reception room is open plan to the kitchen, a newly refurbished modern and chic shower room and a double bedroom with French doors to the roof terrace. The property has recently been repainted throughout. Offered to the market chain free and with share of freehold.

Aynhoe Road is a very sought-after tree-lined street situated within easy reach of the popular shops, bars and restaurants of Brook Green and moments from the Green itself. Hammersmith Station (Piccadilly, District and Hammersmith & City lines) provides the nearest London Underground links while Kensington Olympia Station offers London Overground, London Underground and National Rail services.



- One bedroom apartment
- Private roof terrace
- High ceilings and large rooms
- Prime road in Brook Green
- Modern kitchen
- Share of Freehold
- Contemporary bathroom
- Chain free



## SECOND FLOOR

### AYNHOE ROAD, W14

Approximate Gross Internal Area

**388 Sq.ft / 36 Sq.m**

Floor Plan produced by Mays Floorplans © . Tel 020 3397 4594  
Illustration for identification purposes only, not to scale.

All measurements are maximum, and include wardrobes and window bays where applicable

Agents note: All measurements are approximate and whilst every attempt has been made to ensure accuracy they are for general guidance only and must not be relied on. The fixture and fittings referred to have not been tested and therefore no guarantee can be given that they are in working order. Internal photographs are reproduced for general information and it must not be inferred that any item shown is included with the property.

**Cow & Co**  
LONDON

Tel: 0208 065 0010  
Email: [thehub@cowandco-london.com](mailto:thehub@cowandco-london.com)  
Web: [cowandco-london.com](http://cowandco-london.com)