



Queen Street

Saxon Court | Queen Street | Hitchin | Hertfordshire | SG4 9TB

www.stonegate-estates.co.uk



QUEEN STREET

Property Description

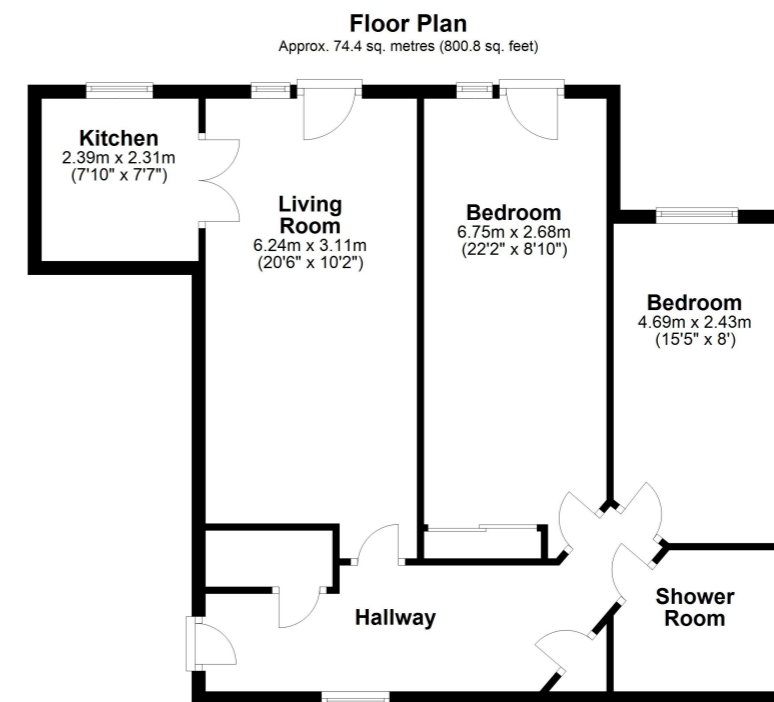
Situated within the heart of the town centre is this one off, two double bedroom retirement apartment place on the first floor.

The apartment offers a unique list of features that makes it stand out compared to its counter parts. These additional features include two Juliet balconies, one to the main living room and one to the master bedroom. There is window to the main hallway adding to the light and airy feel and an another window to the updated shower room. Placed on the first floor towards the rear of the building, there is a secure but pleasant feel whilst views over the gardens are from most windows.

Being placed in the ever popular Saxon Court development and offering all the facilities you would expect from a McCarthy Stone built retirement home, this property offers a communal lounge, laundry facilities, guest room, gardens and a development manager on site. There is the extra comfort of the 24 hour Careline system and the town centre is a gentle walk over the road.

£270,000 Leasehold





Total area: approx. 74.4 sq. metres (800.8 sq. feet)

All measurements shown are approximate and for guidance only. Garages and workshops are not included in any gross floor areas unless integral to the main building where they will be included.
Plan produced using PlanUp.



- Two Bedroom Retirement Apartment
- Two Juliet Balcony's
- Generous Accommodation
- Views over Gardens
- Communal Gardens
- Residents Lounge
- First Floor- close to lift
- No Onward Chain

EPC Rating:

Stonegate Estate Agents

01462 438979

sales@stonegate-estates.co.uk | www.stonegate-estates.co.uk

