



Guide Price £325,000 Share of Freehold
2 bedroom flat

Brownhill Road
Catford

Read all about it...

****GUIDE PRICE £325,000-£350,000****

A substantial 2 double bedroom first floor flat that would make an ideal purchase for first-time buyers or as an investment.

Internally the flat comprises a 16'+ wide living room to the front of the property, which is naturally flooded with light thanks to it's South facing aspect. The 2 generous double bedrooms allow for great flexibility and scope to add fitted storage if needed. There's also a good size shower room and fitted kitchen. The property benefits from a private section of garden accessed via the side alley and off-street parking.

Backing onto Mountsfield Park, the flat is ideally located just 0.6 miles to the twin Catford stations and 1 mile from Hither Green station, which provide a range of commuter services into Central London. Catford town centre can be found less than a mile away and has a wide range of shops and pubs.

Tenure: Share of Freehold (990 years remaining) | **Service Charge:** N/A | **Ground Rent:** N/A | **Council Tax:** Lewisham Band C

FIRST FLOOR

Landing

Pendant light, fitted carpet

Lounge

16' 4" x 14' 0" (4.98m x 4.27m)

Pendant light, front facing double glazed windows, radiator, fireplace, fitted carpet

Bedroom

11' 8" x 10' 4" (3.56m x 3.15m)

Pendant light, double glazed window to rear, radiator, fitted carpet

Bathroom

6' 9" x 6' 6" (2.06m x 1.98m)

Spotlights, side facing double glazed window, free-standing washbasin, walk-in shower, W/C, heated towel rail, tile flooring

Kitchen

8' 11" x 6' 10" (2.72m x 2.08m)

Pendant light, double glazed window to rear, radiator, matching wall and base units, stainless steel sink with drainer and single mixer tap, tile splash back, integrated oven and gas hob, tile flooring

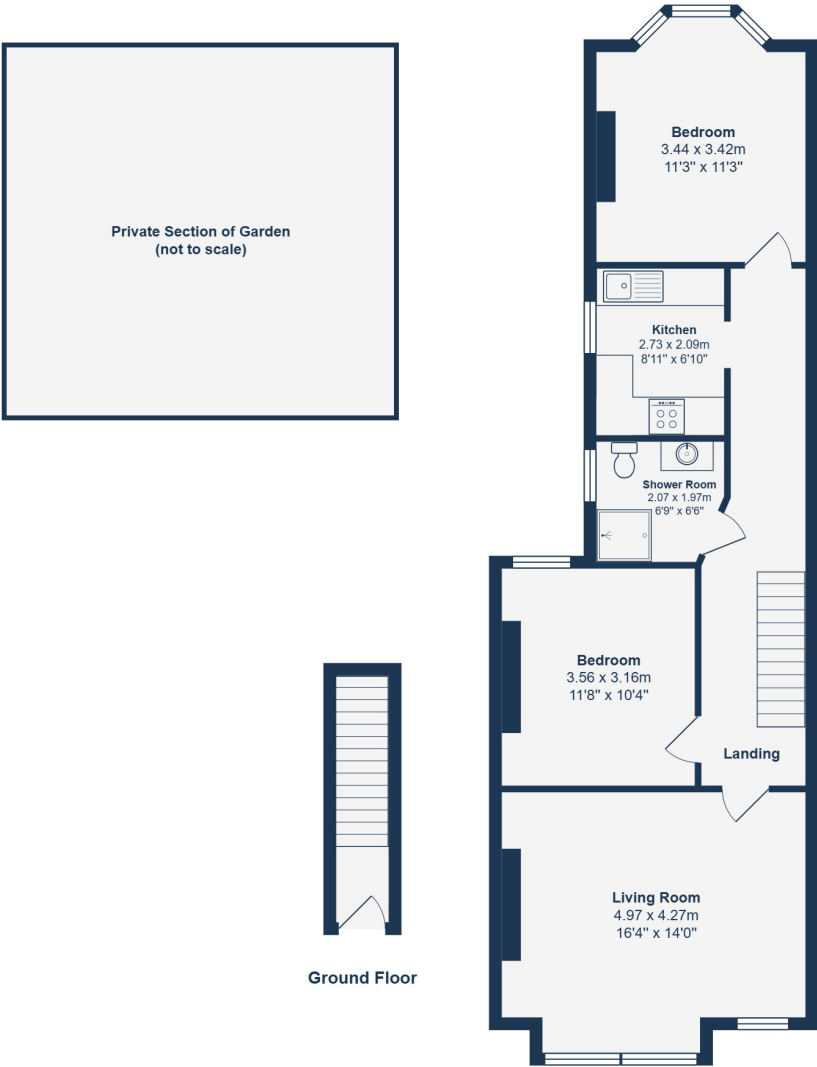
Bedroom

13' 2" x 11' 3" (4.01m x 3.43m)

Pendant light, rear facing double glazed window, radiator, fireplace, fitted carpet

OUTSIDE

Garden



Ground Floor

First Floor

Total Area: 71.4 m² ... 768 ft²
All measurements are approximate and for display purposes only

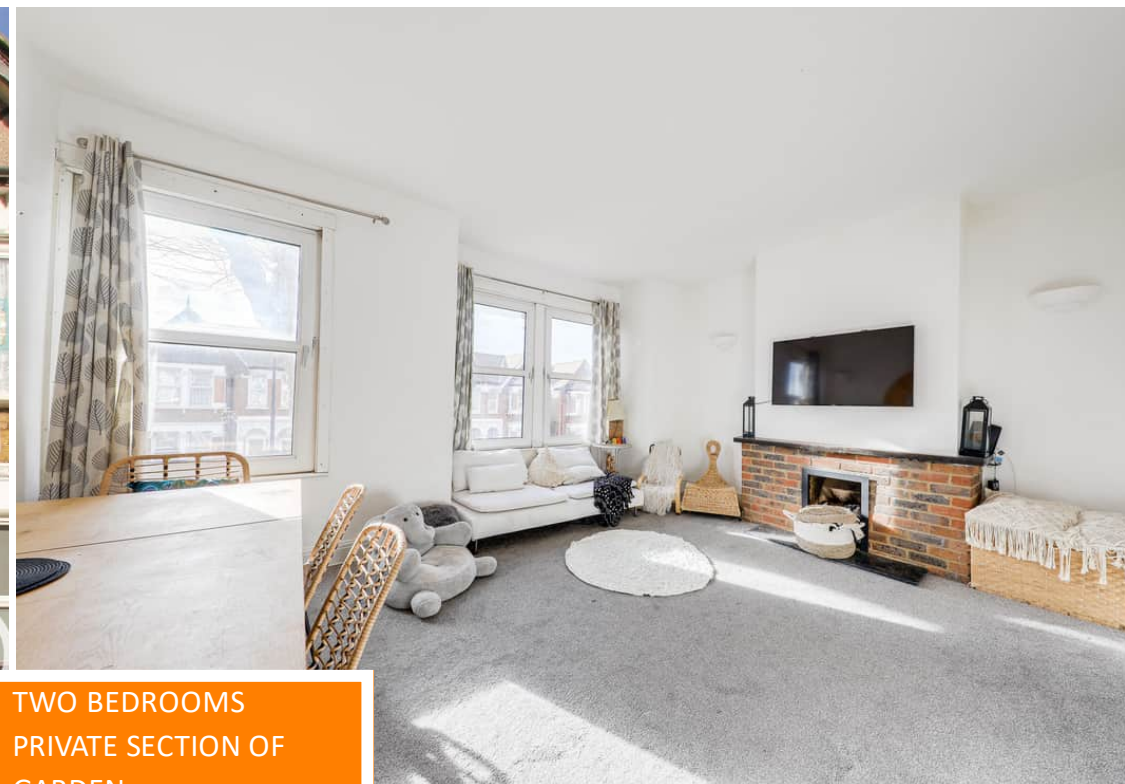
Like what you see?

Call 020 8690 3656 or email us at catford@stanfordstates.london to arrange a viewing or request further information

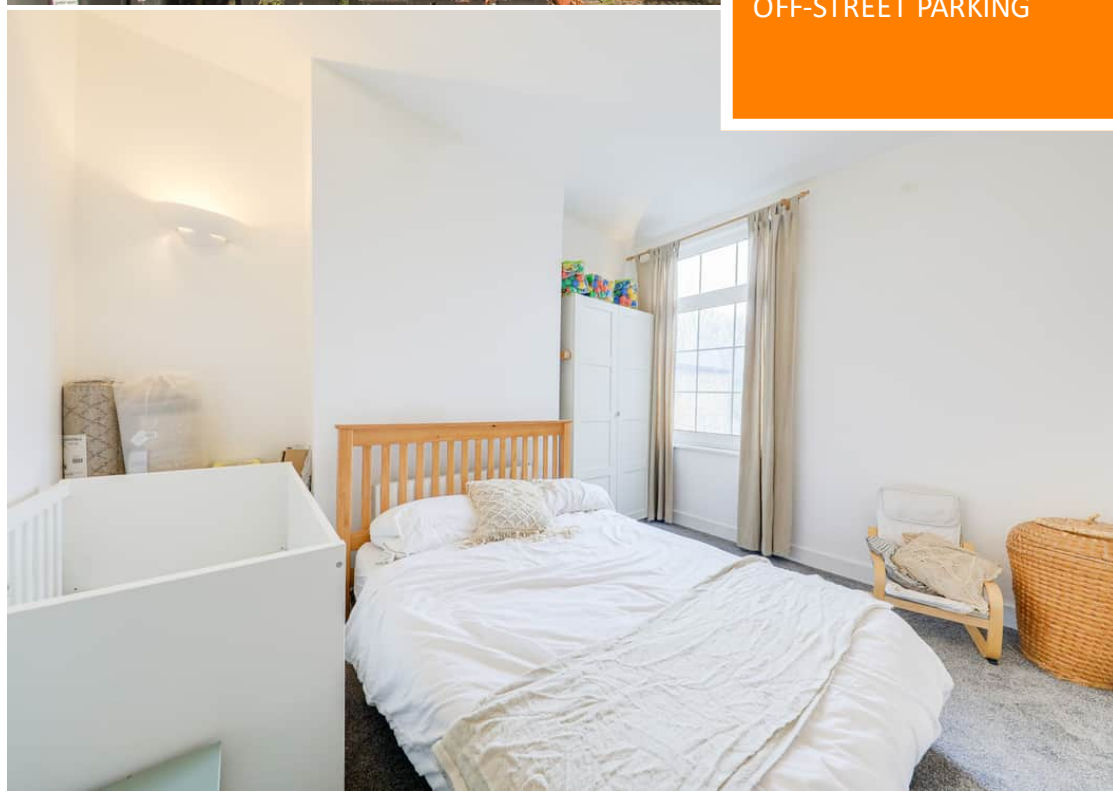
www.stanfordstates.london

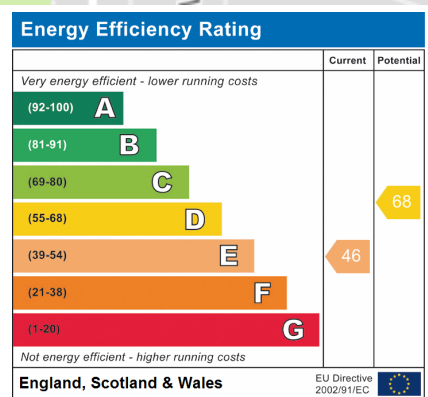
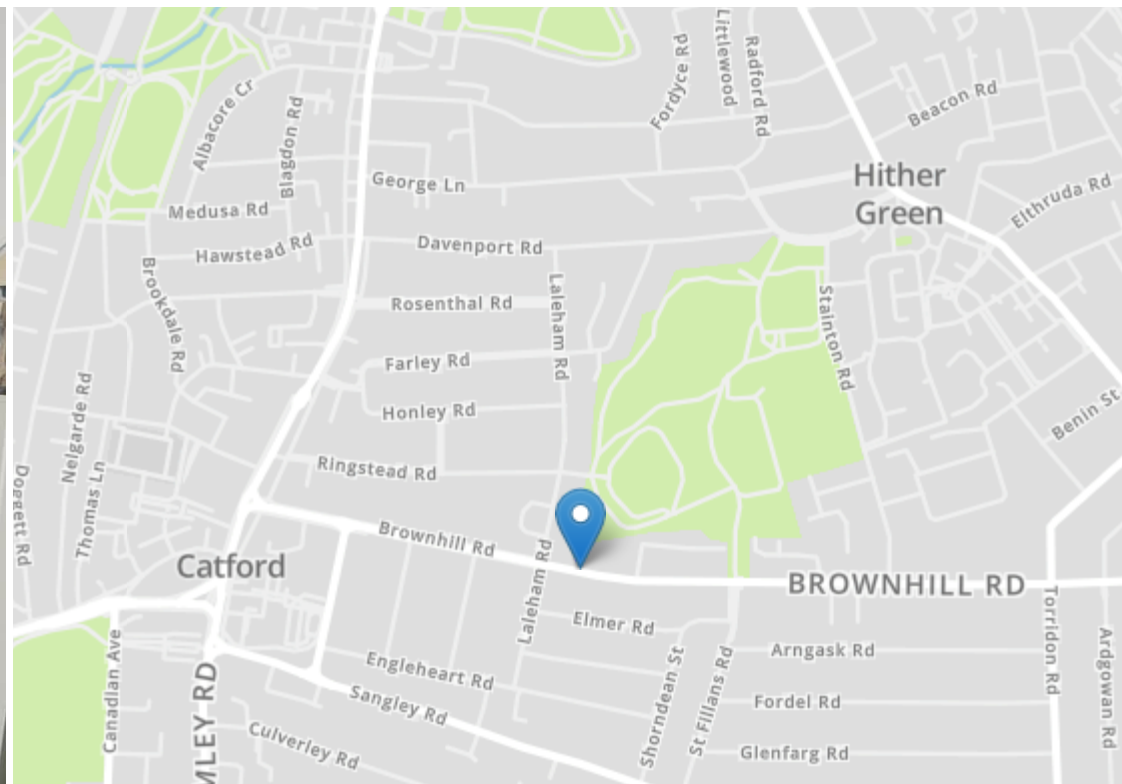


FIRST FLOOR FLAT
TOTAL AREA - 768SQFT.
OFF-STREET PARKING



TWO BEDROOMS
PRIVATE SECTION OF
GARDEN
MOUNTSFIELD PARK NEAR
BY





Robert Stanford Estates property particulars are produced in accordance with the Consumer Rights Act (2015) and should not be construed as a contract or offer. The contents of these property particulars are to provide a general illustration only and are inconsequential to any decisions to purchase a property. A potential buyer accepts that all representations made by these particulars are made in good faith on behalf of the seller and require verification by a buyers' legal and professional representatives prior to an exchange of contracts. We offer no guarantees for any structural component, service or appliance and while we make every effort to take accurate measurements and distances, they are illustrative only. Any reliance you place on information within these particulars is therefore strictly at your own risk.