



BarrettMove

Leatholm



306 Marlow Bottom, Marlow, Buckinghamshire SL7 3QH
Offers in Excess of £750,000 - Freehold



PROPERTY SUMMARY

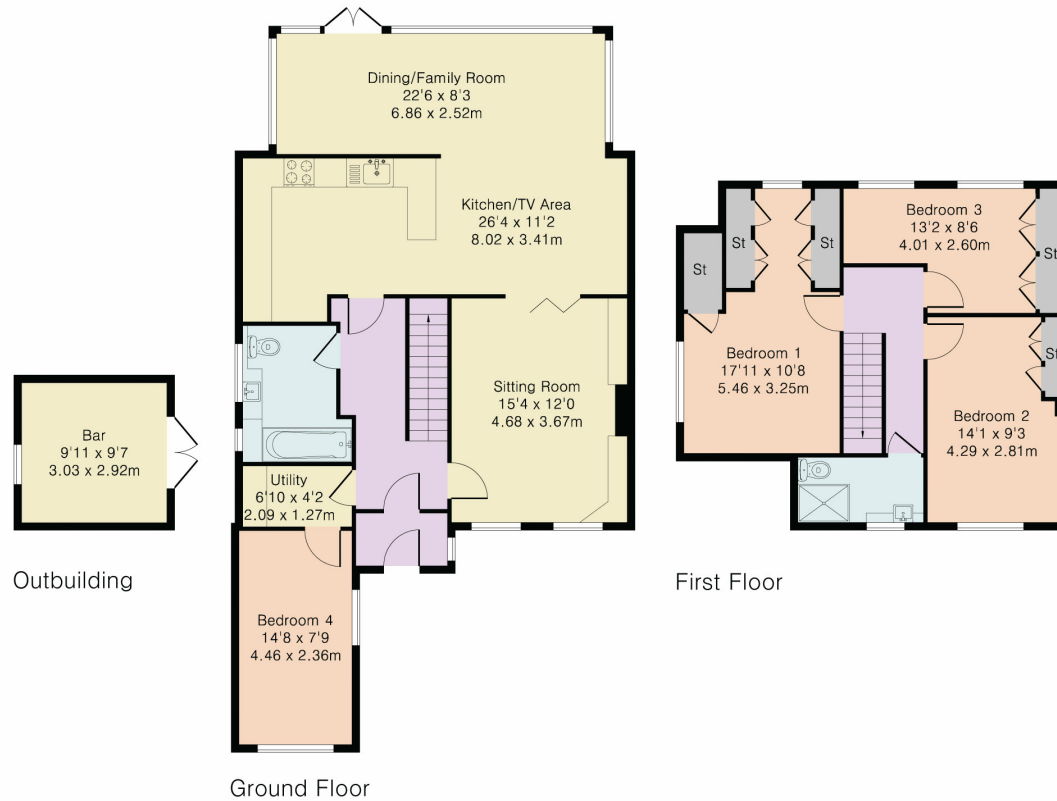
Barrett Move is pleased to market a well presented four bedroom semi-detached house with a large garden in Marlow Bottom.

POINTS OF INTEREST

- Highly recommended for viewing
- Open plan kitchen, diner, family room
- Flexible accommodation for family life
- Garden bar with raised deck
- Off street parking
- Close to woodland walks
- In catchment for Burford primary, Sir William Borlase and Great Marlow schools



Approximate Gross Internal Area 1626 sq ft – 151 sq m
 Ground Floor Area 985 sq ft – 91 sq m
 First Floor Area 546 sq ft – 51 sq m
 Outbuilding Area 95 sq ft – 9 sq m



Although Pink Plan Ltd ensures the highest level of accuracy, measurements of doors, windows and rooms are approximate and no responsibility is taken for error, omission or misstatement. These plans are for representation purposes only as defined by RICS code of measuring practise. No guarantee is given on total square footage of the property within this plan. The figure icon is for initial guidance only and should not be relied on as a basis of valuation.

Energy Efficiency Rating		Current	Potential
<i>Very energy efficient - lower running costs</i>			
(92+)	A		
(81-91)	B		
(69-80)	C		
(55-68)	D		
(39-54)	E		
(21-38)	F		
(1-20)	G		
<i>Not energy efficient - higher running costs</i>			
		70	82
England, Scotland & Wales		EU Directive 2002/91/EC	