



This beautifully presented three double bedroom terraced townhouse, nestled in the heart of the historic village of Colnbrook, sits within very easy reach of Heathrow airport.

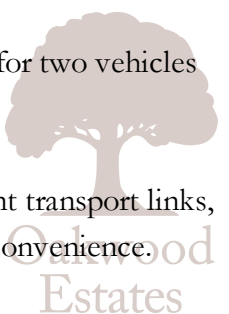
Dating back to the 1800's, this charming period home is overflowing with character features from the Georgian era, including tall ceilings and thoughtfully retained architectural details.

The ground floor offers a generous living space with two reception rooms, comprising a spacious 17ft living room and a separate dining room. A well-appointed 12ft galley kitchen with modern fitted units, and a convenient cloakroom, complete the downstairs.

Upstairs, the first floor boasts a large master bedroom with fitted wardrobes, and a luxurious four-piece family bathroom. The top floor accommodates two additional double bedrooms, perfect for the family, guests, or a home-office set up.

Outside, the property features a low-maintenance rear courtyard garden and allocated parking for two vehicles directly behind the house.

Ideally located a short walk from local amenities, Colnbrook C of E Primary School and excellent transport links, this delightful home is perfect for families or professionals, seeking character comfort and convenience.





Property Information

-  **THREE DOUBLE BEDROOM TERRACED TOWNHOUSE**
-  **CHARACTER FEATURES DATING BACK TO 1800'S**
-  **12FT DINING ROOM**
-  **FOUR PIECE FAMILY BATHROOM**
-  **LOW MAINTENANCE PATIO REAR GARDEN**
-  **VILLAGE LOCATION**
-  **NO CHAIN**
-  **17FT LIVING ROOM**
-  **DOWNSTAIRS CLOAKROOM**
-  **PARKING FOR 2 CARS**
-  **APPROX 1,086 SQUARE FT**

					
x3	x2	x1	x2	Y	N
Bedrooms	Reception Rooms	Bathrooms	Parking Spaces	Garden	Garage

Transport Links

Nearest stations:

Heathrow Terminal 5 (1.7 mi)

Sunnymeads (1.8 mi)

Iver (1.9 mi)

The property is within easy access to the M4/M25 motorway network and Heathrow Airport.

Local Schools

PRIMARY SCHOOLS:

Colnbrook Church of England Primary School  
0.1 miles away

Pippins School  
0.5 miles away

Foxborough Primary School  
1.1 miles away

Holy Family Catholic Primary School  
1.4 miles away

The Langley Heritage Primary  
1.5 miles away

SECONDARY SCHOOLS:

Langley Grammar School  
1.7 miles away

The Langley Academy  
2 miles away

Ditton Park Academy  
2.4 miles away

Upton Court Gramar School  
2.7 miles away

Floor Plan



**Milestone Cottages**  
Approximate Floor Area = 100.89 Square meters / 1085.97 Square feet

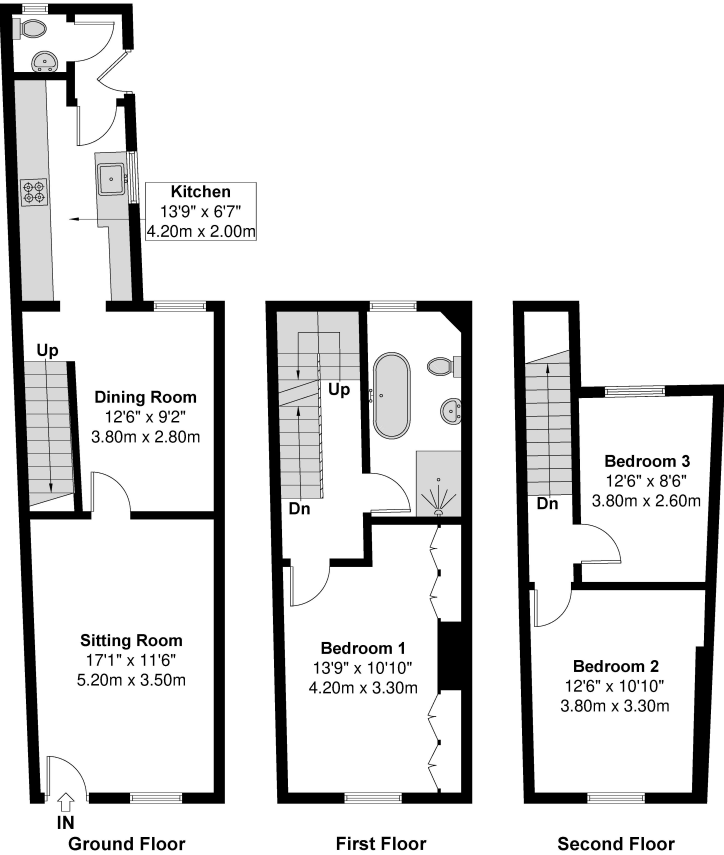


Illustration for identification purposes only, measurements are approximate, not to scale.

Prospective purchasers should be aware that these sales particulars are intended as a general guide only and room sizes should not be relied upon for carpets or furnishing. We have not carried out any form of survey nor have we tested any appliance or services, mechanical or electrical. All maps are supplied by Goview.co.uk from Ordnance Survey mapping. Care has been taken in the preparation of these sales particulars, which are thought to be materially correct, although their accuracy is not guaranteed and they do not form part of any contract.

