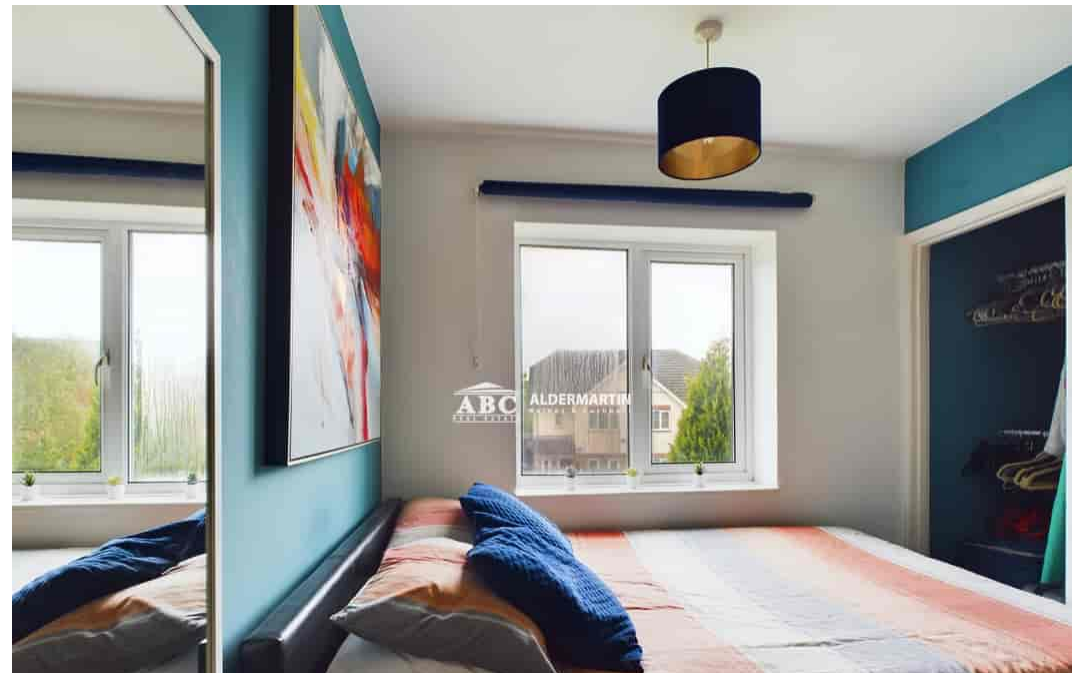
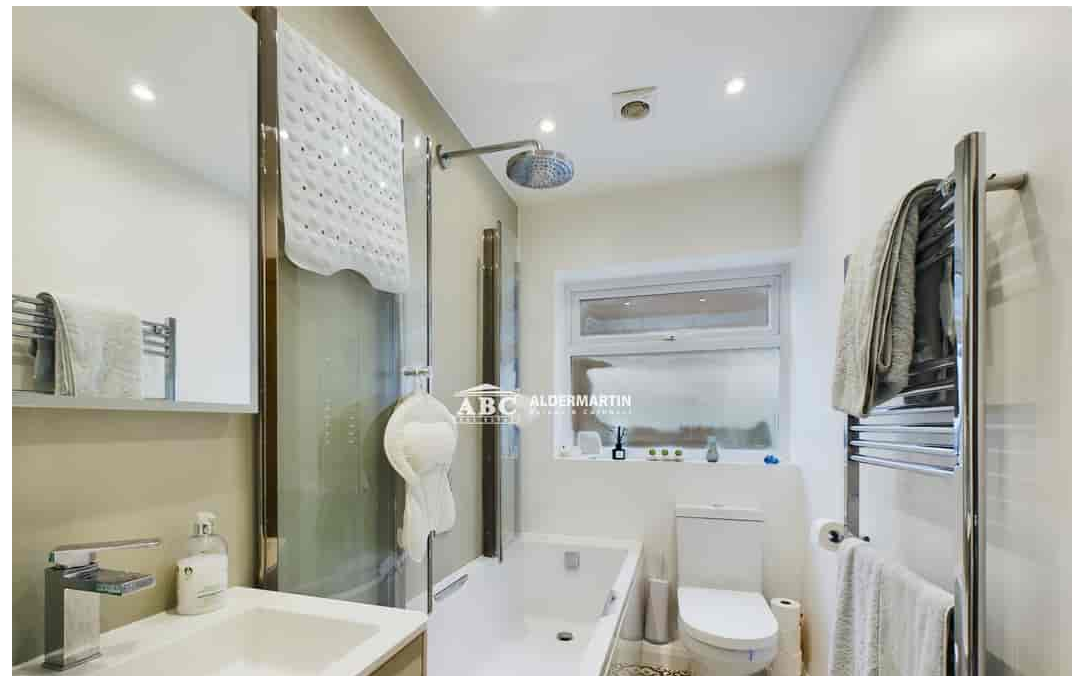
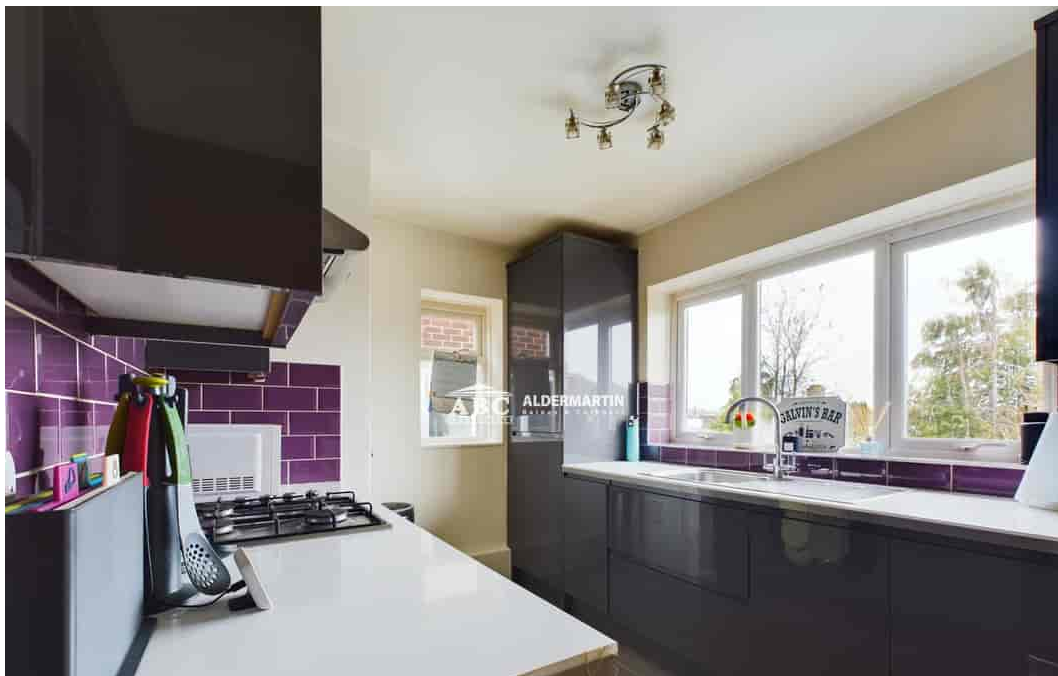




Summit Close, Edgware. HA8 6EJ

**£385,000
Leasehold**







- SPACIOUS FIRST FLOOR MAISONETTE
- IMMACULATE CONDITION
- ACCESS TO HUGE LOFT

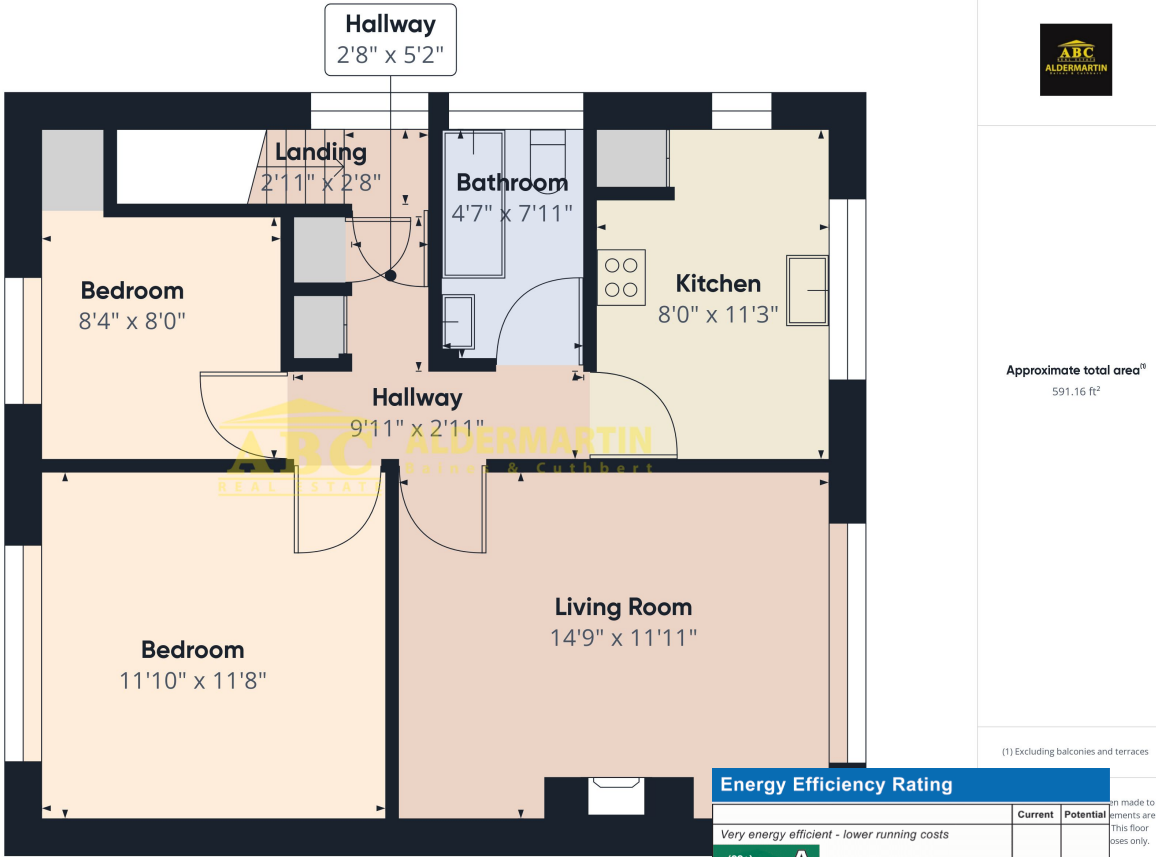
- PRIVATE GARDEN
- TWO DOUBLE BEDROOMS
- COUNCIL TAX BAND C - EPC RATING C

- QUIET RESIDENTIAL CLOSE
- IDEAL FOR FIRST TIME BUYERS OR INVESTORS
- LEASE TO BE EXTENDED TO 176 YEARS

This first floor two double bedroom maisonette is in immaculate condition, and is situated in a quiet residential close, within easy reach of transport links and local amenities. It has a large separate kitchen, ample storage, access to a huge loft, and a private rear garden. It is perfect for first time buyers or investors, and we recommend viewing it at the earliest opportunity.

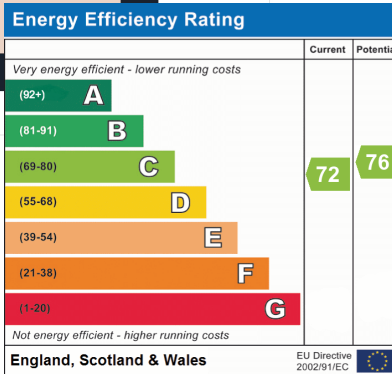
PLEASE NOTE: The asking price includes an additional 90 years on the lease which will be extended to 176 years in conjunction with the sale.

SOLE AGENTS



Approximate total area^m
591.16 ft²

(1) Excluding balconies and terraces



Comments made to this floor plans only.

Edgware
02086 214 000
office@abcestates.co.uk

