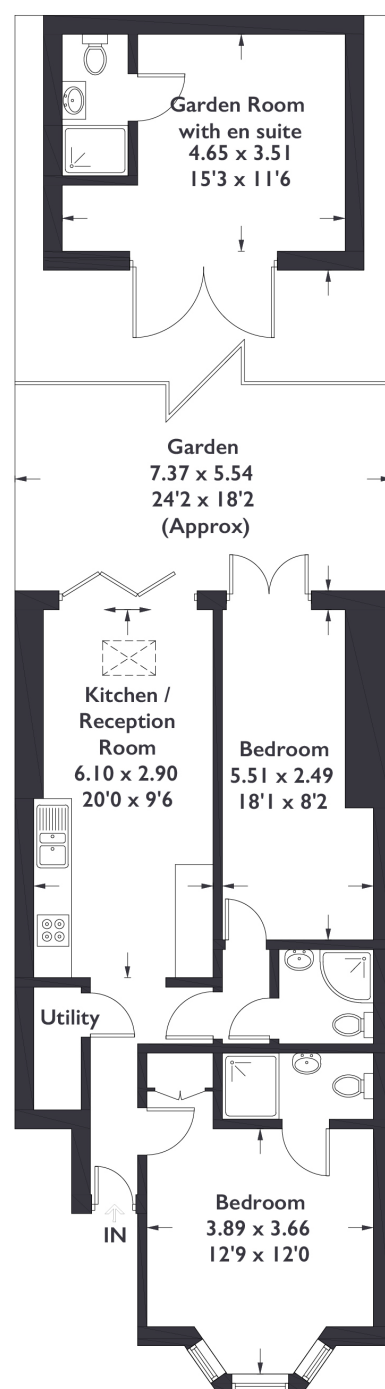


Lancing Road, W13

Approximate Gross Internal Area = 58.3 sq m / 628 sq ft
Summer House = 16.3 sq m / 176 sq ft
Total = 74.6 sq m / 804 sq ft



Ground Floor

Measured in accordance with RICS Code of Measuring Practice. To be used for identification and guidance purposes only.
Whilst every care is taken in the preparation of this plan, please check all dimensions, shapes and compass bearings before making any decisions reliant upon them.
www.london58.com © 2023 hello@london58.com



2 BEDROOM FLAT

Lancing Road, W13

Guide Price £550,000

****CHAIN FREE**** Welcome to this charming ground floor flat, boasting two spacious bedrooms and two bathrooms, including a convenient ensuite. The property offers a comfortable and functional layout, perfect for modern living. The property is nestled right in the heart of west ealing where amenities are just a stones throw away.

FEATURES

- Leasehold
- Two Bedrooms
- Two Bathrooms
- Garden Room
- On-Street Parking
- West Ealing Station (Elizabeth Line)
- St Johns Primary School
- EPC Rating C



2 BEDROOM FLAT

Lancing Road, W13

Guide Price £550,000

Step into luxury with this ground-floor flat, featuring a spacious and stylish kitchen, reception, and dining area that seamlessly blend together to create a welcoming and open living space.

This inviting ground floor flat, featuring an open kitchen and reception space that seamlessly flows into a beautiful garden. The bedroom at the back of the property also opens up to this spacious outdoor oasis, creating a harmonious indoor-outdoor living experience. Step outside to discover a large courtyard garden, providing ample space for relaxation and outdoor gatherings. A delightful bonus awaits you in the form of a garden house with its own bathroom, adding versatility and extra space for various activities. This lovely flat promises a serene and convenient lifestyle, with both indoor and outdoor spaces designed to meet your every need. EPC Rating C.

