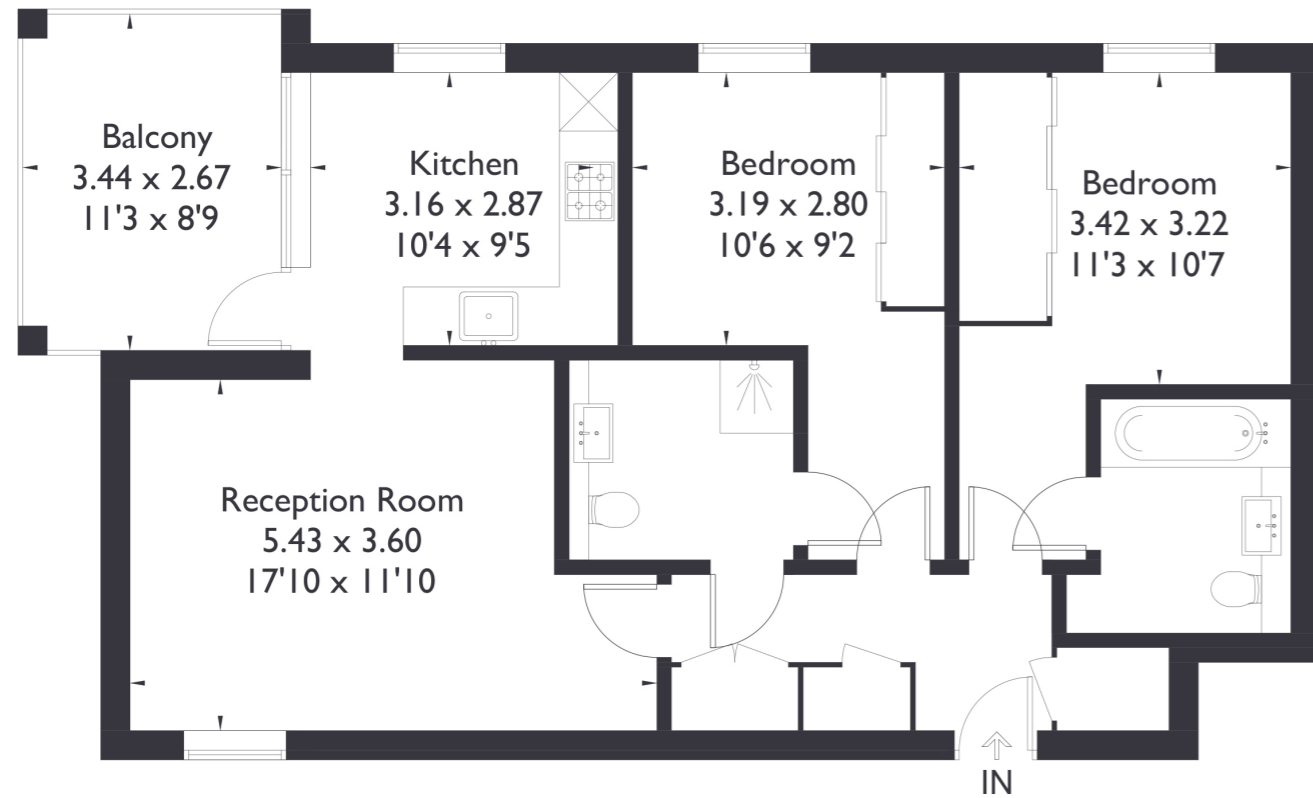


Holman Drive, UB2

Approximate Floor Area = 74.8 sq m / 805 sq ft



Second Floor



2 BEDROOM FLAT

Holman Drive, UB2

£395,000

Introducing a modern gem nestled in a prime location! This two bedroom, two bathroom property boasts abundant natural light, accentuating its contemporary charm. The open plan kitchen and living space create a seamless flow, perfect for both relaxation and entertaining. Step out onto your private balcony to soak in the surroundings or enjoy a morning coffee.

FEATURES

- Two Bedrooms
- Two Bathrooms
- Open Plan Kitchen/Living
- Private Balcony
- Hanwell Station (Elizabeth Line)
- Parking Available
- EPC Rating B



2 BEDROOM FLAT

Holman Drive, UB2 £395,000

The allure of this property lies in its captivating modern charm and impeccably clean interior, drawing in prospective residents with its irresistible appeal.

Convenience is key with parking available, ensuring hassle free commuting. Situated in a sought after area, this residence offers excellent transport links into London, making city exploration effortless. Plus, local amenities are just moments away, adding to the appeal of this stylish abode. Don't miss the opportunity to experience urban living at its finest!

EPC Rating B.