

**4 Bedroom(s), Detached House, Freehold**

**Goodison Boulevard, Cantley, Doncaster.**



- 3D Virtual Tour Available
- Four Bedroom Detached Family Home
- Conservatory
- Family Bathroom
- Local Amenities, Schools and Transport Links

- No Chain
- Spacious Lounge and Separate Dining Room
- Ground Floor W/C
- Rear Enclosed Garden

**£265,000**

**For Sale**

*Book your viewing today* Tel: 01302 247754

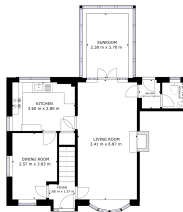


## Owner's View

This has been our family home since 1979. The house has lots of space and our family of 4 people were brought up there. There are excellent transport links to town and local schools.

## Ground Floor

### Floor Plan



## Lounge



## Kitchen





## Dining Room



## Conservatory



## W/C



## First Floor

### Floor Plan

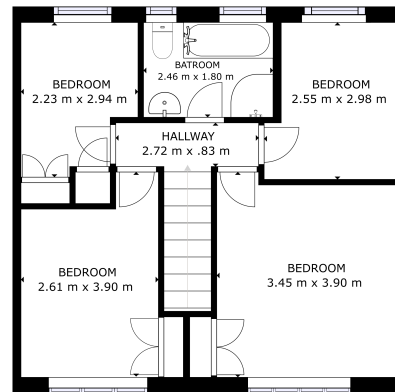


FIGURE 2

CREED HOMES LTD.  
FIGURE 2: FLOOR PLAN OF  
BEDROOM 1 (2.23m x 2.94m),  
BEDROOM 2 (2.55m x 2.98m),  
BEDROOM 3 (2.61m x 3.90m),  
BEDROOM 4 (3.45m x 3.90m),  
BATHROOM (2.46m x 1.80m),  
HALLWAY (2.72m x .83m).  
TOTAL: 118.85m²

Matterport

## Master Bedroom





## Bedroom



## Bedroom



## Bedroom



## Family Bathroom



## Externals

### Front Aspect



### Rear Garden



## Property Information

Council Tax Band - C

Utilities - Mains Gas, Mains Electricity, Mains Water

Water Meter - Yes

Tenure - Freehold

Solar Panels - No

Space Heating System - Gas Boiler with radiators

Approximate Heating System Installation Date -





Water Heating System - Gas boiler (Combi)

Approximate Water Heating Installation Date -

Boiler Location - Kitchen

Approximate Electrical System Installation Date -

Permanent Loft Ladder - No

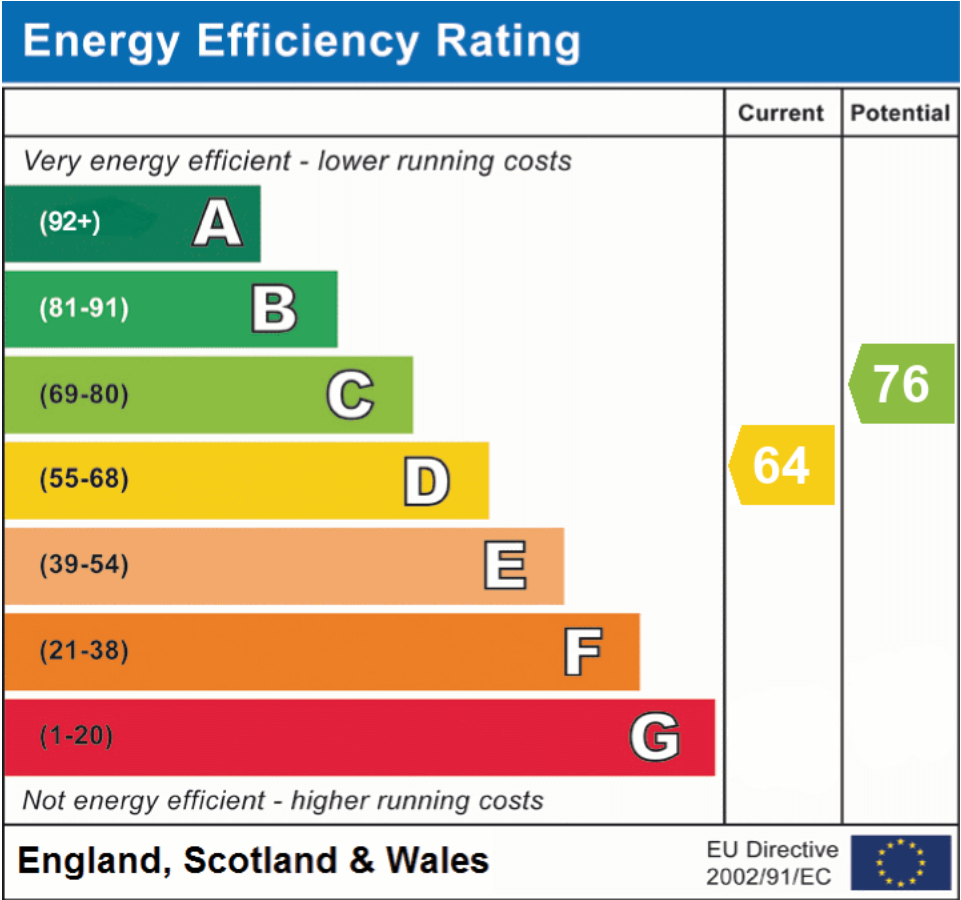
Loft Insulation - Yes

Loft Boarded out – No

Whilst every effort is made to ensure that the information contained in these particulars is reliable, they do not constitute or form part of an offer or any contract. The Property Hive accept no liability for the accuracy of the contents, and therefore they should be independently verified by prospective buyers or tenants before agreeing an offer. All measurements provided are approximate and should be verified before exchange of contracts. No appliances, fixtures or fittings have been tested and should be checked by the buyer before exchange of contracts to ensure they are in good working order.



## Energy Performance Certificate



All measurements provided are approximate and should be verified before exchange of contracts. No appliances have been tested and should be checked to ensure they are in good working order.