



**GREGORY BROWN**  
RESIDENTIAL SALES & LETTINGS

OIEO £475,000 Freehold  
**FOR SALE**



## **Strodes Crescent, STAINES- UPON-THAMES, TW18 1DG**

WELL PRESENTED & SPACIOUS THREE BEDROOM SEMI-DETACHED PROPERTY SITUATED ALONG THIS SOUGHT AFTER ROAD IDEALLY LOCATED FOR EASY ACCESS TO STAINES TOWN CENTRE, MAINLINE TRAIN STATION, LOCAL SHOPS & SCHOOLS. Offering great scope for extension (S.T.R.P.P), the property benefits from a spacious lounge/diner, separate fitted kitchen, downstairs W.C, three well proportioned bedrooms, white bathroom suite, large secluded rear garden, off-street parking & garage. Viewings Highly Recommended!

**Gregory Brown**

127a, High Street, Staines-upon-Thames, TW18 4PD

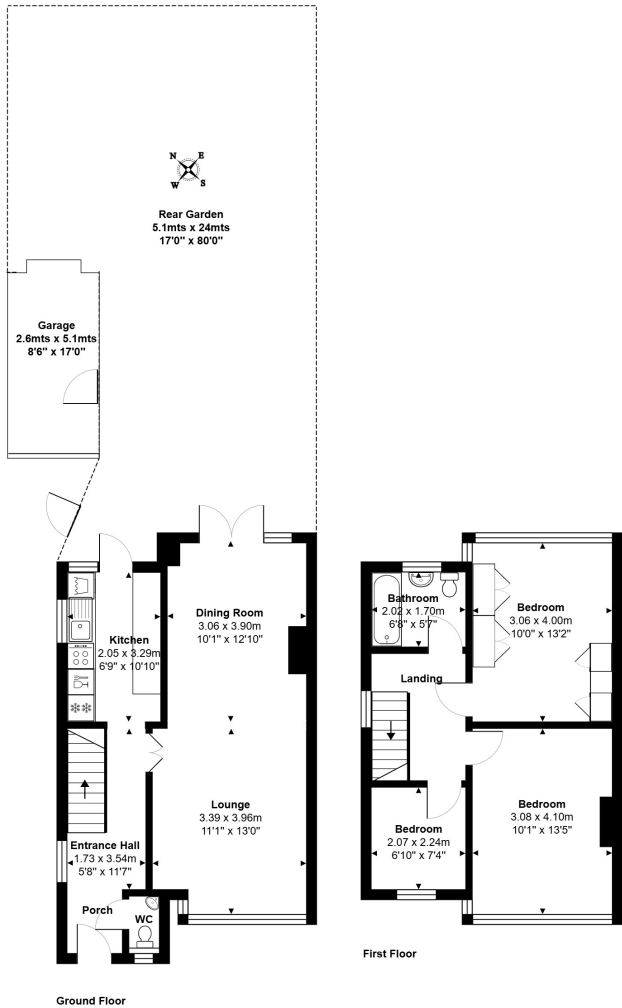
01784 451458

staines@gregory-brown.co.uk

ROOM DESCRIPTIONS

\_\_\_\_\_

FLOORPLAN



Total Area: 83.9 m<sup>2</sup> ... 903 ft<sup>2</sup>  
All measurements are approximate and for display purposes only.