

Three spotlights are positioned at the top of the frame, casting a bright, circular glow onto a white rectangular sign below. The sign is centered and contains the text 'Coming soon' in a large, bold, black sans-serif font. The background is a light, neutral color, possibly a wall or ceiling.

**Coming
soon**

10 Menin Way, Farnham, Surrey. GU9 8DY.
Guide Price £1,500,000

keatsfearn

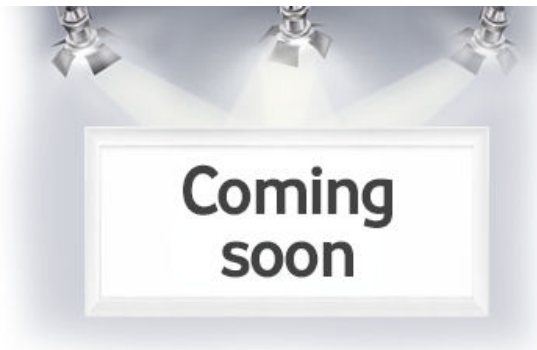


Description

Superb Opportunity to acquire 4 stunning bedroom house that has been extended and updated by the current owners to provide modern open-plan living in a very convenient location - only 100 yards of South Farnham School rated OUTSTANDING.

Key Features include - Entrance hall | Sitting room | Superb Kitchen | Breakfast/family/study area | Playroom | Cloakroom | Utility | Main bedroom with en suite bathroom and dressing room | 3 further bedrooms | Family bathroom | Beautiful Gardens | Summer/Pool house with adjoining outside kitchen | Garden shed | Storage area | Parking for several cars | Sunken endless resistance heated swimming pool

In a sought after position on the south side of the Georgian town of Farnham within 100 yards of South Farnham School.



In a sought after position on the south side of the Georgian town of Farnham within 100 yards of South Farnham School. The Georgian town centre of Farnham offers a comprehensive range of shopping, recreational and cultural pursuits, with bustling cobbled courtyards boasting many shops, cafés and an excellent choice of restaurants. There is a Waitrose, Sainsbury's, Leisure Centre, David Lloyd Club, local Rugby, Football and Tennis clubs, and Farnham's historic deer park offering over 300 acres of beautiful open countryside, providing opportunities for walking, cycling and dog walking. There is an excellent choice of both state and private schools in the area including Edgeborough, Waverley Abbey, South Farnham School, Weydon Secondary School, Frensham Heights, St. Edmund's and Barfield.

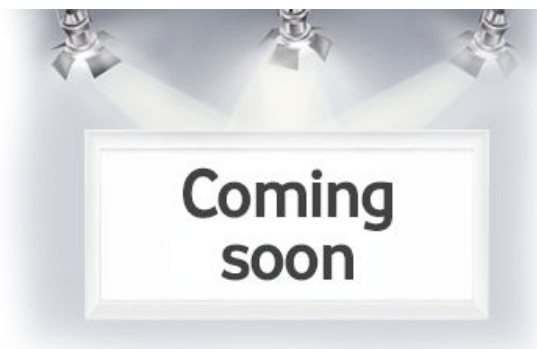
Material Information - All main services, Superfast broadband available and good mobile signal likely with all providers. Gas fired central heating. Solar panels on roof to complement the hot water.

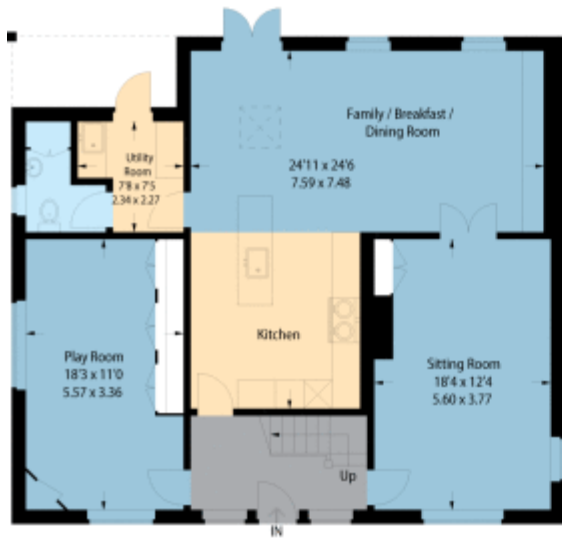
Directions

SAT NAV - GU9 8DY

Local Authority

Waverley
Band G





Ground Floor



First Floor

This plan is for layout guidance only. Not drawn to scale unless stated. Windows and door openings are approximate. Whilst every care is taken in the preparation of this plan, please check all dimensions, shapes and compass bearings before making any decisions reliant upon them. (ID112386)
www.bagshawandhaedy.com © 2014

15 Downing Street , Farnham, Surrey, GU9 7PB

Tel: 01252 718018

Email: sales@keatsfearn.co.uk

Web: www.keatsfearn.co.uk

keatsfearn



**Coming
soon**



**Coming
soon**



**Coming
soon**



**Coming
soon**