



Yeoman Close  
Ipswich  
Suffolk  
IP1 2QE

Offers In Excess Of £110,000

bettermove

# Yeoman Close

## Ipswich

Bettermove are proud to present this 2 bedroom flat in Ipswich. Welcoming cash buyers only.

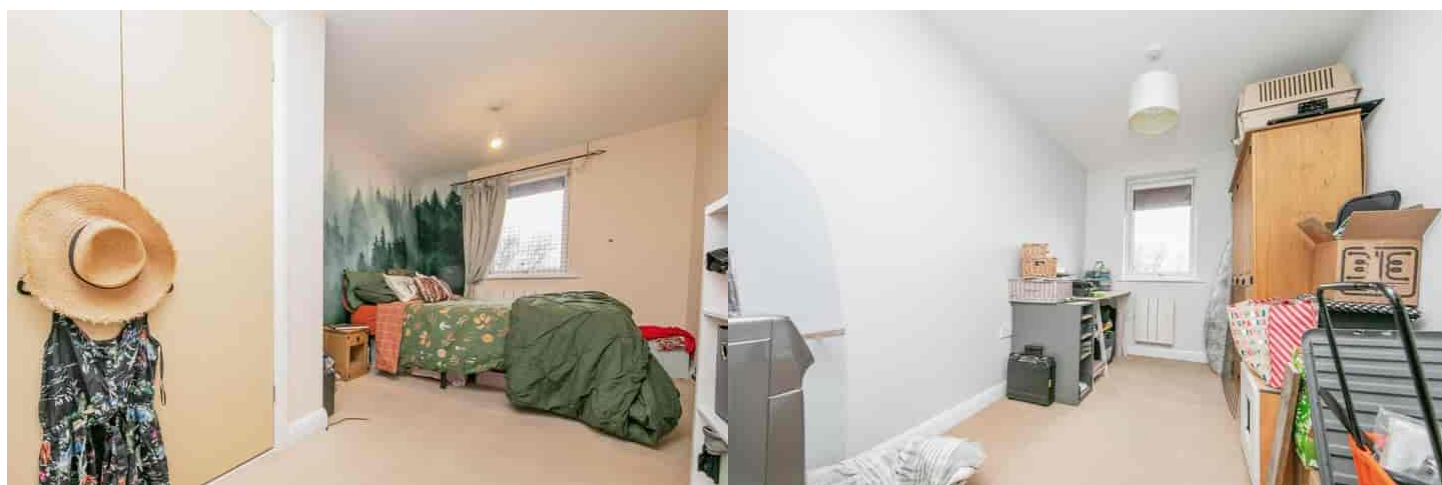
The property benefits from double glazing and electric heating throughout, with 1 allocated parking space. The council tax band is B.

This is a leasehold property with 105 years remaining on the lease; the ground rent is £250.00 per annum and the service charge is £3,000 per annum including water.

This beautifully presented property is located on the third floor, and comprises a spacious fitted kitchen/living, two bedrooms, a bathroom and a private balcony with river views.


Located in the popular town of Ipswich, the property is close to a range of amenities, including shops, supermarkets, restaurants and pubs. Excellent transport connections can be found from Ipswich train station and a variety of local bus routes.

This exciting opportunity should not be missed! All enquiries can be made through Bettermove on 0330 004 0050.





This floor plan is for illustrative purposes only. It is not drawn to scale. Any measurements, floor areas (including any total floor area), openings and orientation are approximate. No details are guaranteed, they cannot be relied upon for any purpose and they do not form part of any agreement. No liability is taken for any error, omission or misstatement. A party must rely upon its own inspection(s). Powered by [www.focalagent.com](http://www.focalagent.com)

Energy Efficiency Rating		
	Current	Potential
<i>Very energy efficient - lower running costs</i>		
(92+) <b>A</b>		
(81-91) <b>B</b>	84	85
(69-80) <b>C</b>		
(55-68) <b>D</b>		
(39-54) <b>E</b>		
(21-38) <b>F</b>		
(1-20) <b>G</b>		
<i>Not energy efficient - higher running costs</i>		
<b>England, Scotland &amp; Wales</b> <small>EU Directive 2002/91/EC</small> 		





20-22 Bridge End, Leeds, LS1 4DJ  
t: 0330 004 0050 e: [hello@bettermove.co.uk](mailto:hello@bettermove.co.uk)  
[www.bettermove.co.uk](http://www.bettermove.co.uk)