



2 Artichoke Hill

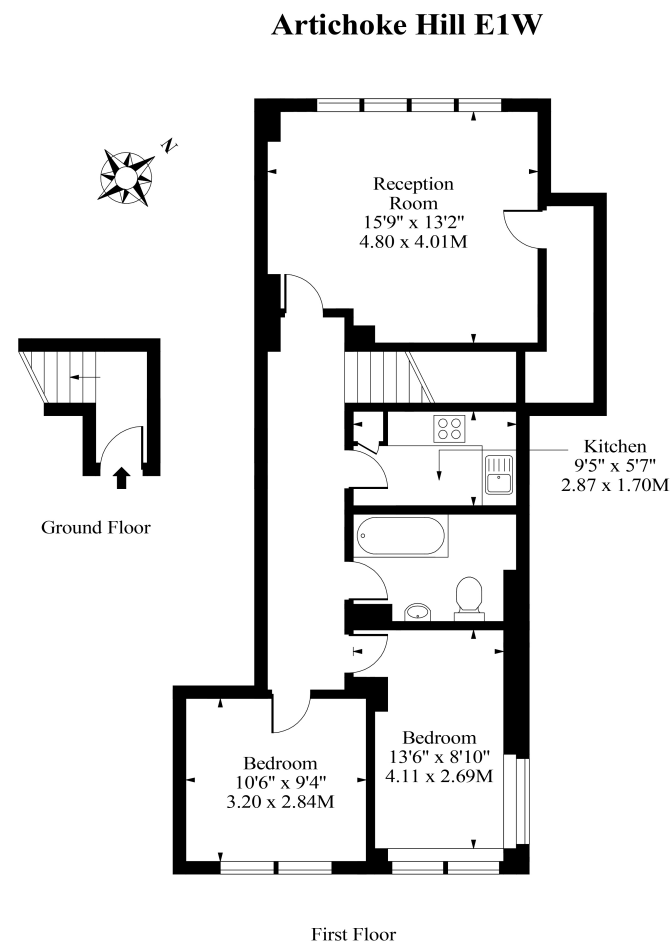
£350,000

2 Artichoke Hill, London E1W 2BA

A well presented triple aspect, two bedroom apartment located within sought after Wapping, moments from Tower Hill and Wapping stations together with convenient access to The City and St Katharine and Tobacco Docks. The apartment is available chain free and has a compliant EWS1.

This well presented apartment comprises entrance hall with stairs leading to hallway providing access to reception room with dining area and walk in storage, separate fitted kitchen with work tops and integrated appliances, master bedroom, guest bedroom two and bathroom. The apartment is well presented and is available chain free with the option to purchase a secure allocated parking space subject to separate negotiation. Located within the heart of Wapping with St Katharine and Tobacco Dock being moments away together with Tower Hill and Wapping stations. The apartment is EWS1 compliant.

- Artichoke Hill E1W
- Triple Aspect Apartment
- Separate Fitted Kitchen
- Parking Available Under Separate Negotiation
- Two Bedrooms
- Generous Reception Room
- Excellent Location
- EWS1 Compliant



Approx Gross Internal Area 769 Sq Ft - 71.44 Sq M

Measured in accordance with RICS guidelines. Every attempt is made to ensure accuracy
However all measurements are approximate.
The floor plan is illustrative purposes only and is not to scale

