



29 Ordiga | The Muir | Spey Bay | Fochabers | Moray | IV32 7PN

www.cclproperty.com

29 Ordiga, The Muir, Spey Bay, Fochabers, Moray, IV32 7PN

- Superb Detached Family Home
- Bright and spacious Living Room
- 3 Double Bedrooms - 2 with En-Suites
- Kitchen/Family Room
- Dining Room
- Large Conservatory
- Family Bathroom
- 1 acre plot in picturesque setting
- Double Glazing & Oil Central Heating
- Beautifully maintained garden grounds

Summary

CCL are delighted to offer for sale this charming three bedroom family home in the beautiful idyllic setting of Bogmoor, Spey Bay. Set in a spacious 1 acre plot, the property offers great family accommodation comprising of a light and spacious living room, kitchen/Family room, Utility Room, Dining Room, Large Conservatory, 3 double bedrooms, two with en-suites, family bathroom and a garage. Beautiful mature garden grounds surround the property with a large gravel driveway leading to the property and providing ample private parking for several cars and leading to the garage. Immaculate lawn to the rear with several bespoke outbuildings provide lovely work area for a number of uses. Early viewing is highly recommended to appreciate the beautiful location and potential that this property has to offer.





Property

Substantial family home which is a bespoke build by the current owners, offers spacious family accommodation 2 floors comprising Entrance vestibule, open welcoming hallway, spacious living room with bay window, dining room, kitchen/family room, 3 double bedrooms two with en-suites, and a family bathroom. The property benefits from extensive surrounding gardens of approximately 1 acre. Double glazing and oil central heating.

Accommodation:

Entrance Vestibule: Entry is gained via a solid wood front door with glazed panel to the side. Further glazed panel door leads to the hallway.

Hallway: Spacious, bright welcoming hallway with carpeted staircase leading to the upper floor and giving access to most of the downstairs accommodation.

Living Room: (5.14m x 4.20m) Door from the hallway leads to the elegant, comfortable living room finished in light cool tones. A lovely stone fireplace with over mantle and feature wood burner fire provides an excellent focal point, as does the large Bay window overlooking the front garden and flooding the room with natural light.

Dining Room: (3.0m x 2.48m) A further room situated to the front, with open plan access from the hall can comfortably seat 6 for dining and has serving hatch from the kitchen.

Kitchen/Family Room: (6.40m x 4.55m) Fitted with an excellent range of white wall and base units with contrasting grey worktops, incorporating a sink and drainer with mosaic tile splash back. Integrated double oven, hob and extractor. Picture window to the rear. A door leads to the utility room. A central island with further storage separates the kitchen from the family area, which is has a large storage cupboard, comfortable seating and wall mounted TV.

Conservatory: (7.78m x 4.58m at widest) Extremely bright conservatory, fully glazed on three sides with double doors to the garden and laid in beautiful slate tiles. Steps lead down from the kitchen/family area to the dining area and situated at the other of the conservatory is lovely seating area where to you can sit and read a book or watch the wildlife in the garden.

Utility Room: (3.30m x 2.40m) Fitted with the matching units, work tops incorporating sink and drainer as the kitchen. Plumbing and space for washing machine and dish washer. Space for fridge/freezer. Door to the rear garden.

W.C.: Situated off the utility room and fitted with wash hand basin and W.C.

Family Bathroom: (3.61m x 2.47m at widest) Fitted with a modern white Jacuzzi 3 piece suite comprising of WC, wash hand basin and jacuzzi bath. Separate double size walk-in shower with rainfall shower head. The room is finished in grey tiling and has wall mounted mirror door cabinet. Underfloor heating.

Bedroom 3 (4.0m x 3.19m) Double bedroom which has 2 double wardrobes with sliding doors which provide excellent hanging and storage space. Ample space for free standing furniture. Door leading into the conservatory.

Upper Landing: (5.74m x 2.76m) Carpeted staircase leads to the spacious upper landing, which has a corner snug with sofa and TV, recess bay window to the rear, also provides access to both further bedrooms.

Bedroom 1: (4.84m x 4.50m into Bay window) Double bedroom with bay window to the rear with lovely window seat. Two double wardrobes with mirrored sliding doors providing an excellent range of hanging and shelved storage. Door to the en-suite.

En-Suite: Good sized en-suite with enclosed shower cabinet, wash hand basin and W.C.

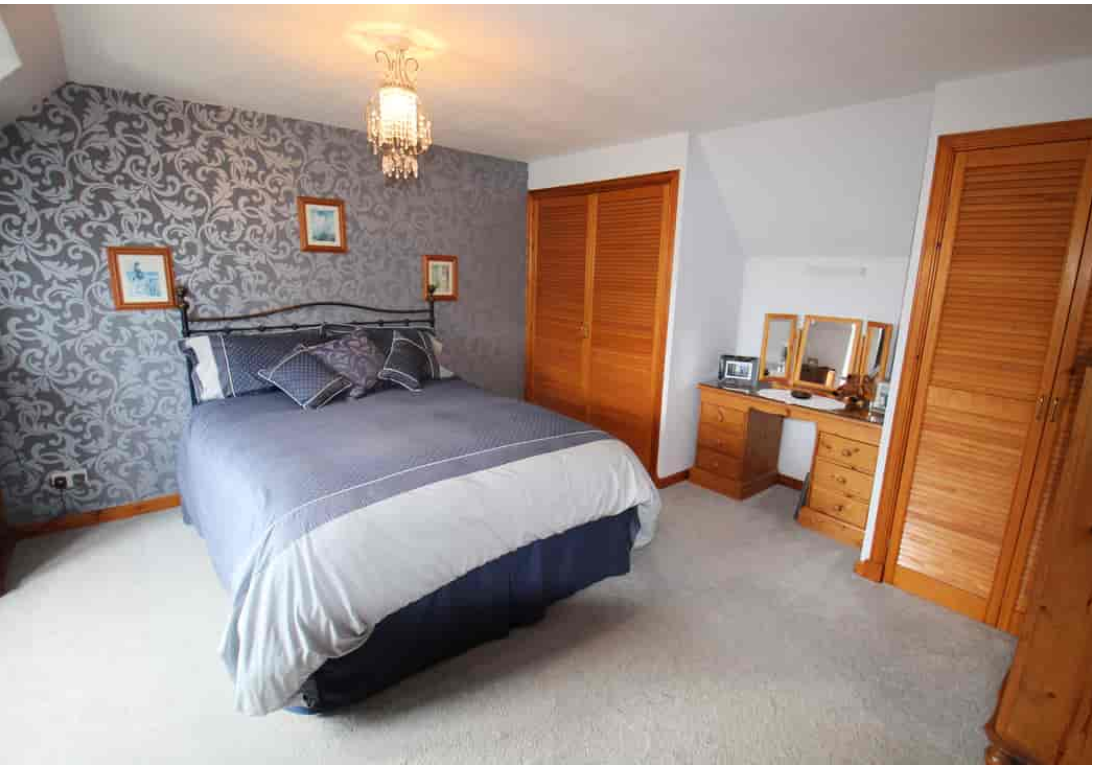
Bedroom 2: (5.16m x 3.93m) Again, double bedroom with bay window this time to the front, two double wardrobes with wooden doors providing hang and shelf space. Door to en-suite

En-Suite: Fitted shower cabinet, wash hand basin and W.C.

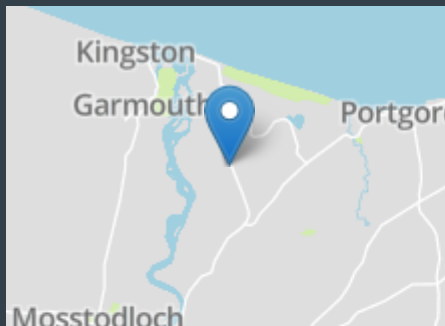
External

The property is set in an idyllic plot with garden grounds surrounding and benefits from peaceful countryside. A gravel driveway to the front leads to the front door and the garage and provides ample parking for several cars. Further area of lawn to the front with hedging and mature trees. The gravel drive continues through a gate down the side of the property to the rear garden. The spectacular rear garden is set out in lovely usable areas, with a large area of lawn, wild meadow garden, play area for children, a tranquil seating area, 48 foot poly tunnel, fruit and vegetable garden with potting shed, summer house and further outdoor office/hobby room. Directly to the rear of the house is a paved patio area with seating, lovely mature garden area with an array of shrubs, flower and trees and a garden pond.

Garage: Fitted with light and power. Up and over door as well as a wooden door at the rear leading to the utility room.







Price

Offers Over £375,000 are sought for the property.

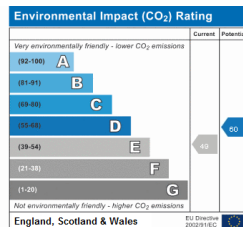
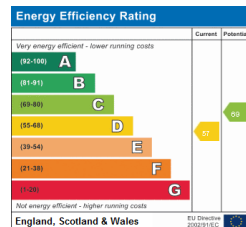
Tenure

Scottish equivalent of Freehold



ORDIGA, 29 THE MUIR, BOGMOOR, SPEY BAY, IV32 7PN

Whilst every attempt has been made to ensure the accuracy of the floorplan contained here, measurements of doors, windows, rooms and any other items are approximate and no responsibility is taken for any omission or mis-statement. This plan is for illustrative purposes only and should be used as such by any prospective purchaser. The services, systems and appliances shown have not been tested and no guarantee as to their operability or efficiency can be given. Made with Metagix 12/2021



All appointments to view this or any of our other properties must be made through the vendors sole agents:

CCL Property

62 High Street, Elgin, Moray, IV30 1BU

T: 01343 610520

www.cclproperty.com



Important: We would like to inform prospective purchasers that these sales particulars have been prepared as a general guide only. A detailed survey has not been carried out, nor services, appliances and fittings tested. Room sizes should not be relied upon for furnishing purposes and are approximate. If floor plans are included, they are for guidance only and illustration purposes only and may not be to scale. If there are any important matters likely to affect your decision to buy, please contact us before viewing the property. All offers should be in writing to CCL Property with whom the purchasers should register their interest if they wish to be advised of a closing date.