

maloco
mowat
parker

Solicitors & Estate Agents

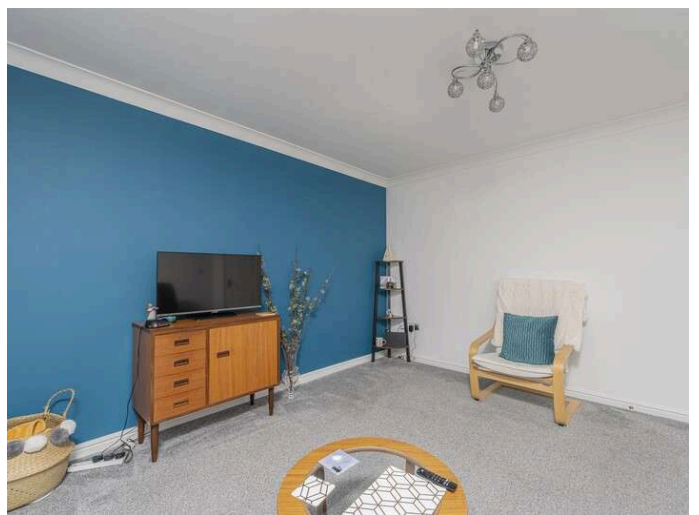
FLAT A, 25

Osprey Crescent, Dunfermline, KY11 8JP



Working harder for you

I love that the flat is situated in a quiet cul-de-sac, only a five minute walk from Duloch Park, but also close to nearby amenities like shops, restaurants and two train stations. You have the best of both worlds



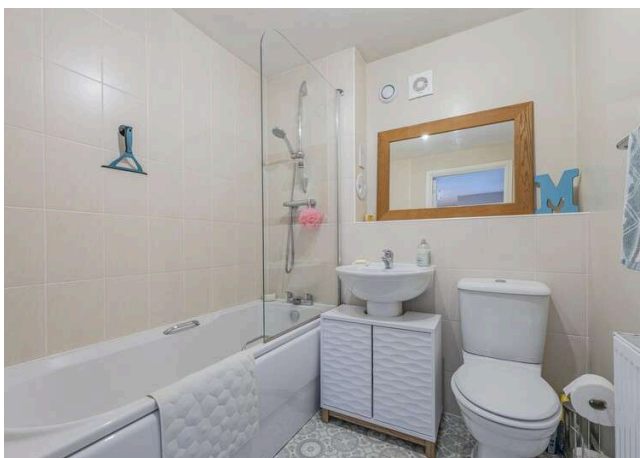
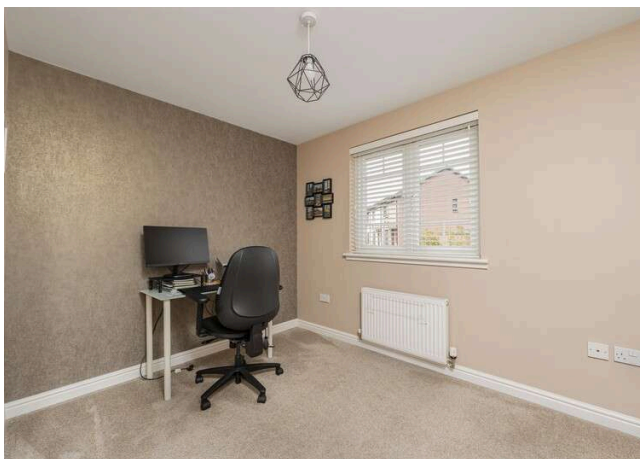
2 bedrooms



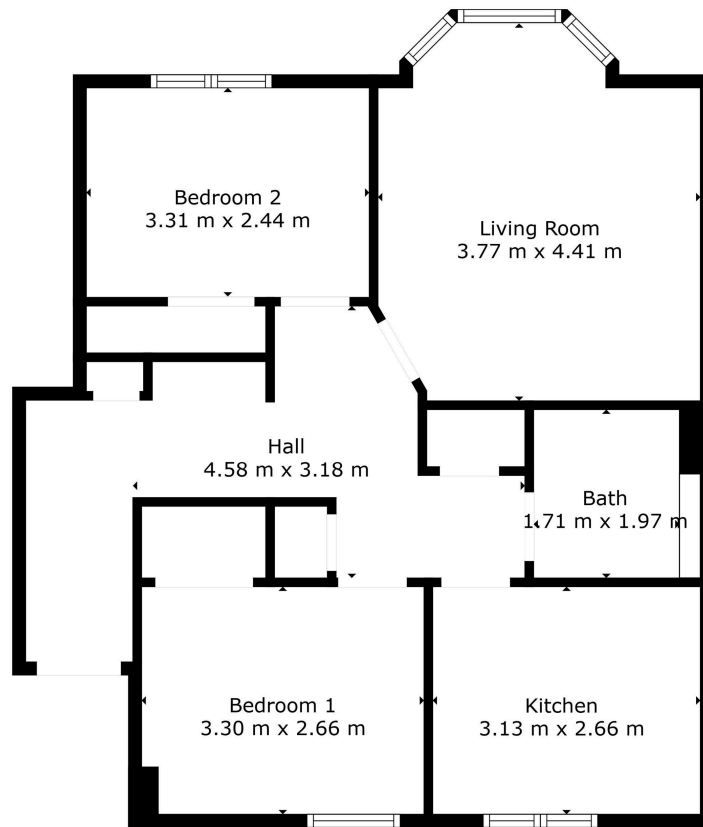
1 public



1 bathroom



- + A modern, ground floor, two-bedroom apartment situated within a popular development within the eastern expansion of Dunfermline
- + Vast array of amenities within the Duloch Park area, including restaurants, coffee shops, ten screen cinema, both private and public gyms and additional leisure facilities
- + Excellent transport links via M90 motorway, two local train stations and Park and ride facilities at Halbeath
- + Private resident's parking with secure entry phone system and factored garden grounds
- + Spacious and welcoming entrance hall with several storage cupboards, leading to all accommodation
- + Bright and spacious lounge with bay window
- + Modern kitchen with integrated appliances and excellent storage throughout
- + Two double bedrooms with built in wardrobes available
- + Tiled family bathroom with three piece suite and shower over the bath
- + Perfect for first time buyers or as a buy to let investment



Measurements Are Calculated By Cubicasa Technology. Deemed Highly Reliable But Not Guaranteed.



Living Room	3.77 m x 4.41 m / 12'4" x 14'6"
Kitchen	3.13 m x 2.66 m / 10'3" x 8'9"
Bedroom 1	3.30 m x 2.66 m / 10'10" x 8'9"
Bedroom 2	3.31 m x 2.44 m / 10'10" x 8'0"
Bathroom	1.71 m x 1.97 m / 5'7" x 6'6"



Sharing is caring!

6/8 Bonnar Street,
Dunfermline KY12 7JR

T: 01383 629720 F: 01383 621333, DX DF69

espc

W: maloco.co.uk