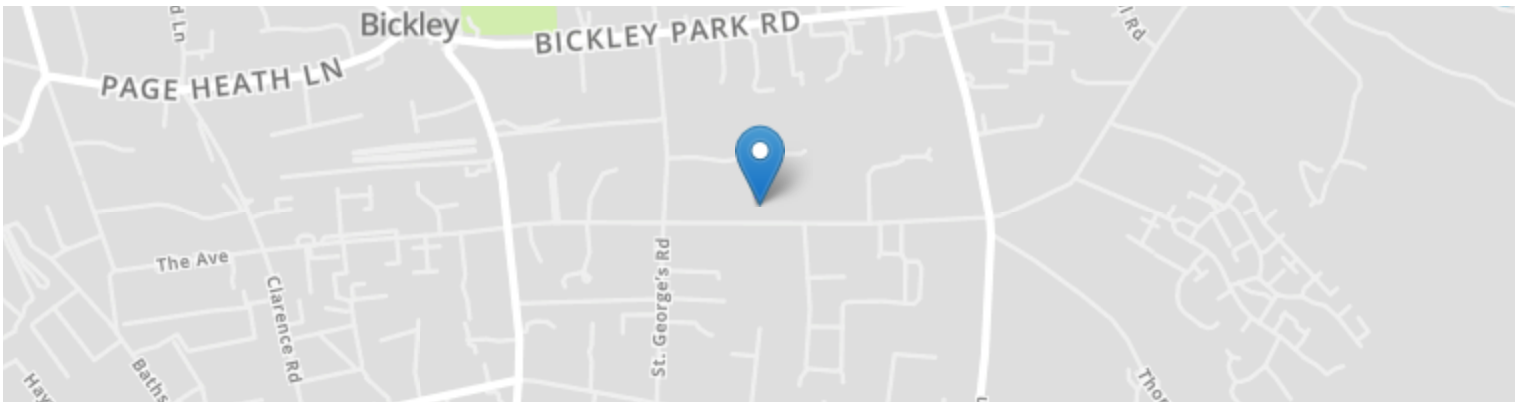




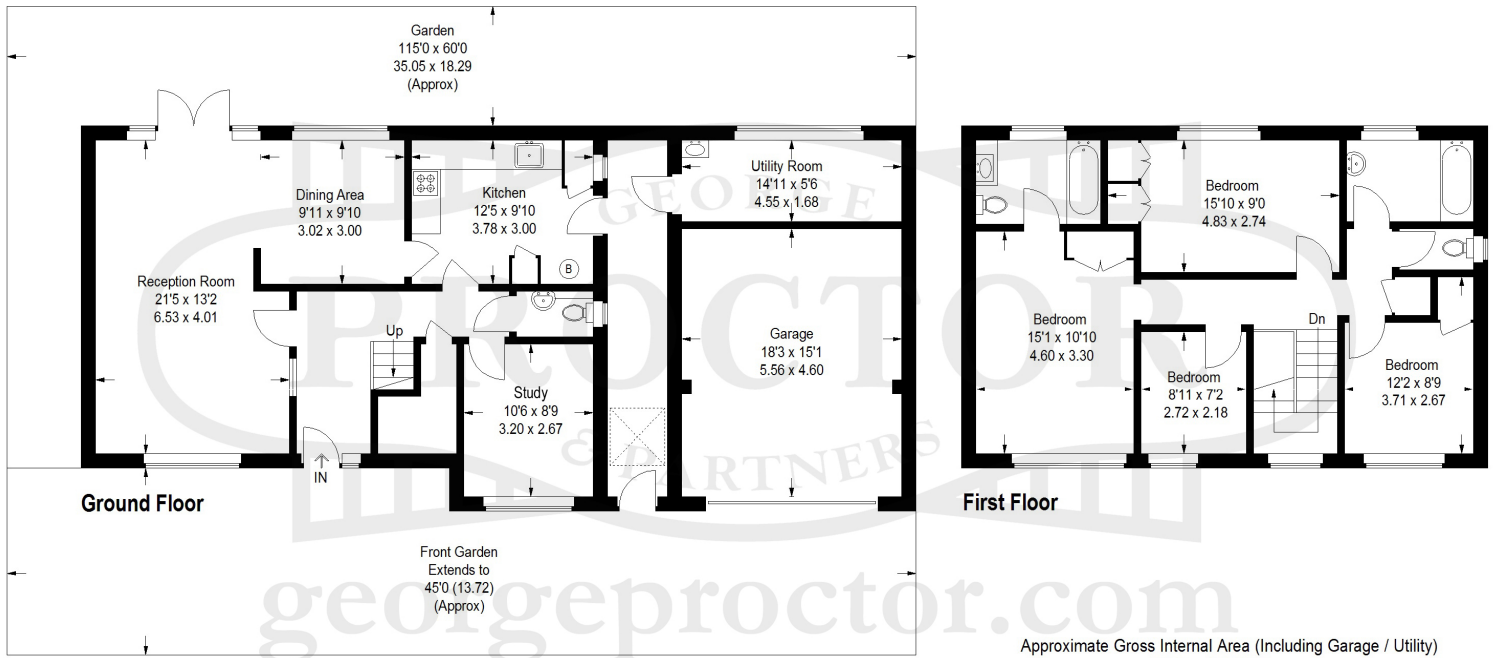
**Katra Hawthorne Road, Bickley BR1 2HN**



**Price: £1,195,000**

**4 bedrooms | 3 receptions | 2 bathrooms**

Set on this generous plot in this highly sought after residential road within close proximity of Bickley station we are pleased to offer for sale this 4 bedroomed detached house. Offered for sale for the first time since new, this well-proportioned home benefits from gas central heating and double glazing and provides enormous potential for enlargement/improvement, subject to any necessary consents. We recommend your early viewing. **EXCLUSIVE TO GEORGE PROCTOR & PARTNERS. EPC Rating: E**



Approximate Gross Internal Area (Including Garage / Utility)  
1999 sq ft / 185.7 sq m  
(Excluding Garage / Utility)  
1624 sq ft / 150.9 sq m