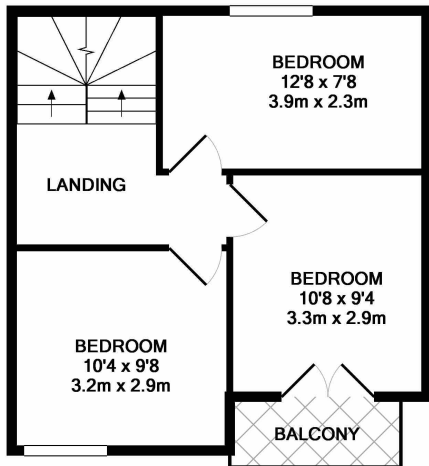


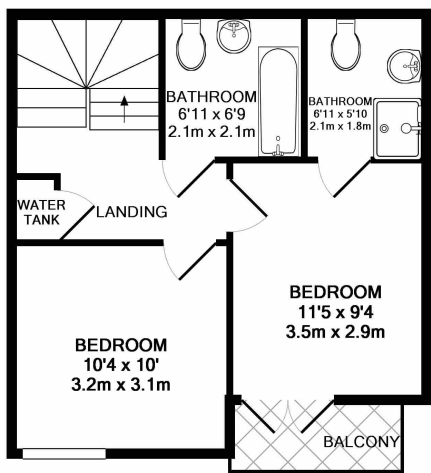
GROUND FLOOR
APPROX. FLOOR
AREA 362 SQ.FT.
(33.7 SQ.M.)



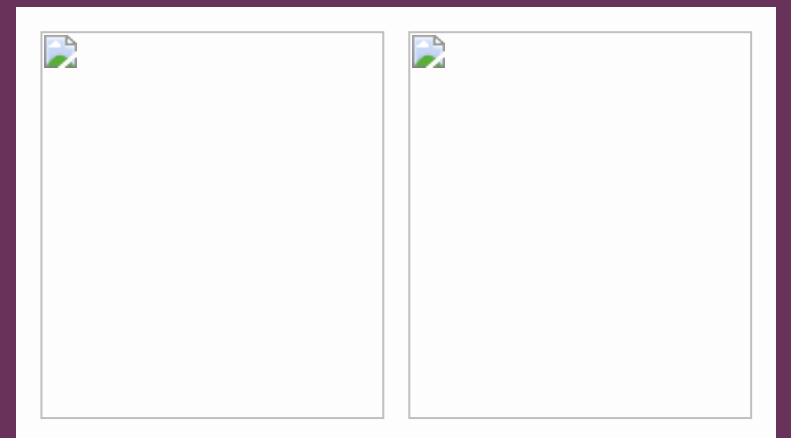
1ST FLOOR
APPROX. FLOOR
AREA 389 SQ.FT.
(36.1 SQ.M.)

TOTAL APPROX. FLOOR AREA 1140 SQ.FT. (105.9 SQ.M.)

Whilst every attempt has been made to ensure the accuracy of the floor plan contained here, measurements of doors, windows, rooms and any other items are approximate and no responsibility is taken for any error, omission, or mis-statement. This plan is for illustrative purposes only and should be used as such by any prospective purchaser. The services, systems and appliances shown have not been tested and no guarantee as to their operability or efficiency can be given
Made with Metropix ©2018



2ND FLOOR
APPROX. FLOOR
AREA 389 SQ.FT.
(36.1 SQ.M.)





Student living how it should be, warm, comfortable, stylish, spacious and well located. Bills package available with high speed internet, off street parking. Equal sized bedrooms, lots of bathrooms and fully refurbished in 2023 so new bathrooms, furniture and all repainted. First group to see will take. Available Jul 24 to Jul 25.



- FULLY REFURBISHED IN 2023
- BILLS PACKAGE AVAILABLE
- CITY CENTRE LOCATION
- ALDI 1 MIN WALK
- MODERN TOWNHOUSE
- FIVE BEDROOMS (2 WITH PRIVATE BALCONIES)

- £440 PER PERSON PER MONTH
- THREE BATHROOMS (ONE EN-SUITE)
- OFF STREET PARKING
- PRIME LOCATION FOR ALL UNI'S
- AVAILABLE JUL 24
- CALL IAN ON 07414 791 096 OR EMAIL iancaplis@gmail.com



Bingley Court

Canterbury, CT1 2SW

Bingley Court CT1, AVAIL ACADEMIC YEAR 24/25. Five bedroom townhouse over three floors with equal sized bedrooms, three bathrooms, off street parking and private balconies in a stunning location for town and uni's.

Bills package available, fully refurbished in 2023 with new furniture throughout. Everything on the doorstep, Canterbury Christchurch, UKC Unibus, Station and City Centre!

