

FOR SALE

Southfield Road,
Bedford Park borders, W4

Flat
Bedford Park borders

£750,000 lh

4  1  1 

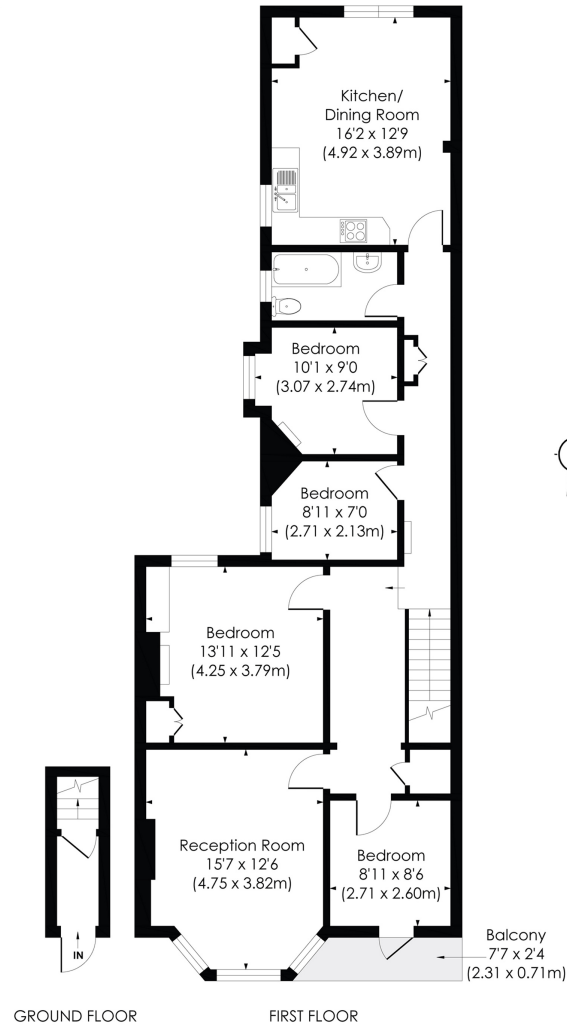


**horton
andgarton**

SALES / LETTINGS / PROPERTY MANAGEMENT

hortonandgarton.co.uk | Sales 020 3989 6464 | Lettings 020 3989 5454
161 Chiswick High Road, London, W4 2DT





SOUTHFIELD ROAD, W4

Approx. Gross Internal Floor Area
1094 Sq' / 101.67 SqM



© Pixangle Property Marketing Ltd. info@pixangle.com Tel: 0208 870 2118

This floor plan has been prepared for the purpose of illustration only in accordance with the latest RICS code of measuring practice and is not to scale. All measurements and areas are approximate and whilst every effort has been made to ensure the accuracy of the plan contained here, no responsibility is taken for any error, omission or misstatement.



Edwardian Maisonette | Potential to extend into the loft space, planning approved | 1094 Sq' - 101.67 SqM | EPC rating D | Four bedrooms - One bathroom | Bedford Park borders



hortonandgarton.co.uk
 Sales 020 3989 6464
 Lettings 020 3989 5454

161 Chiswick High Road, London, W4 2DT