**SOLE
AGENT**

9 Cordier Views

Cordier Hill | St Peter Port | GY11JJ

Top floor light and spacious two bedroom modern apartment within walking distance of the town centre. Accommodation comprises kitchen/lounge/diner, two bedrooms with fitted units, master en-suite shower room and bathroom. The apartment benefits from a balcony and parking for two cars. Regret no smokers or pets. Professional sharers may be considered by the Landlord. One older child accepted. Available from 1st October.

£2,300 pcm

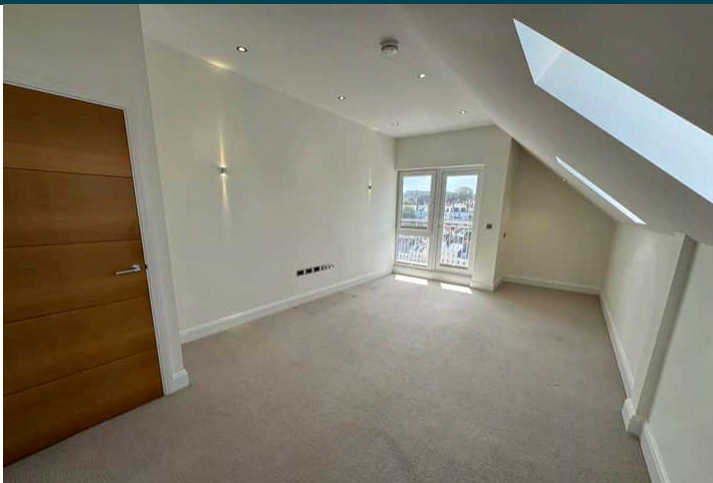
2 BEDROOMS

1 BATHROOM

1 RECEPTION

**Shields
& Rutland**

PHOTOS

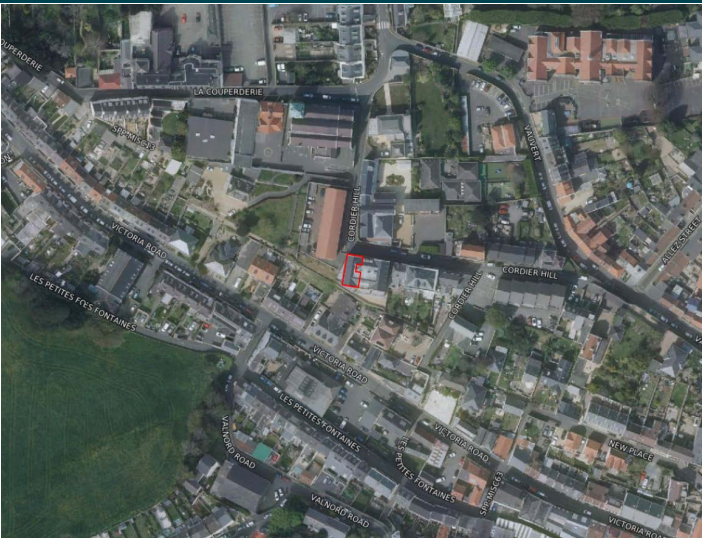


PHOTOS





SPECIFICATIONS



Entrance Hall

5.64m x 1.84m (18' 6" x 6' 0")

Lounge/Diner

6.80m x 3.67m (22' 4" x 12' 0")

Kitchen

2.92m x 2.64m (9' 7" x 8' 8")

Bedroom 1

4.77m x 3.18m (15' 8" x 10' 5")

Ensuite

2.72m x 1.86m (8' 11" x 6' 1")

Bedroom 2

4.73m x 2.76m (15' 6" x 9' 1")

Bathroom

2.91m x 2.22m (9' 7" x 7' 3")

Parking

There is parking for two cars.

PRICE INCLUDES

Flooring and light fittings

SPECIAL FEATURES

- Light and spacious accommodation
- Walking distance of town centre
- 2 parking spaces
- Good storage

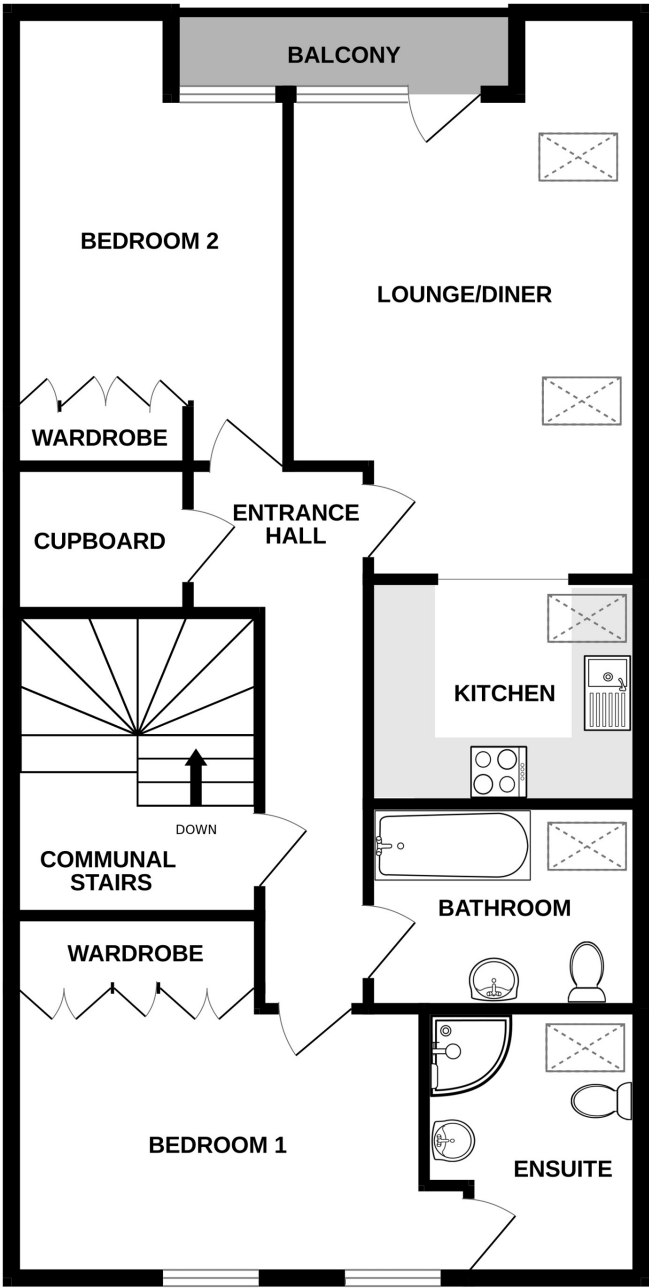
SERVICES

Mains water, electricity and drainage.

APPLIANCES INCLUDED

- Neff oven
- Neff hob
- Neff extractor fan
- Neff fridge
- Neff freezer
- Neff washer dryer
- Neff dishwasher

TOP FLOOR



9 CORDIER VIEWS

Whilst every attempt has been made to ensure the accuracy of the floorplan contained here, measurements of doors, windows, rooms and any other items are approximate and no responsibility is taken for any error, omission or mis-statement. This plan is for illustrative purposes only and should be used as such by any prospective purchaser. The services, systems and appliances shown have not been tested and no guarantee as to their operability or efficiency can be given.
Made with Metropix ©2025