



212 Mendip Way, Stevenage, Hertfordshire. SG1 6GB

| Satchells



## 3 Bedroom Town House

### Guide Price £400,000 Freehold

A spacious three bedroom terraced property accommodation spread across three floors.

Internally the accommodation comprises entrance hall, cloakroom, a light and airy living room and a modern fitted kitchen/dining room to the ground floor. At first floor level are two good sized bedrooms and a family bathroom, whilst to the second floor is the large principal bedroom with en-suite shower room and fitted wardrobes. Externally is a good size rear garden and a garage. **CHAIN FREE!**

- Modern terraced home
- Three generous bedrooms
- En-suite to principal bedroom
- Good size living room
- Fitted kitchen/dining room
- Ground floor cloakroom
- First floor bathroom
- Private rear garden
- Garage
- EPC rating C. Council tax band D

**Anti-Money Laundering (AML):**

It is a legal requirement that all purchasers comply with Anti-Money Laundering regulations. As such, once a purchase has been agreed subject to contract, the purchaser/s will be required to undertake an AML check carried out by our third party provider at a cost of £66 inclusive of VAT per property, payable by the applicant/s.



Sales | Lettings | Commercial | Land | New Homes | Mortgages | Conveyancing

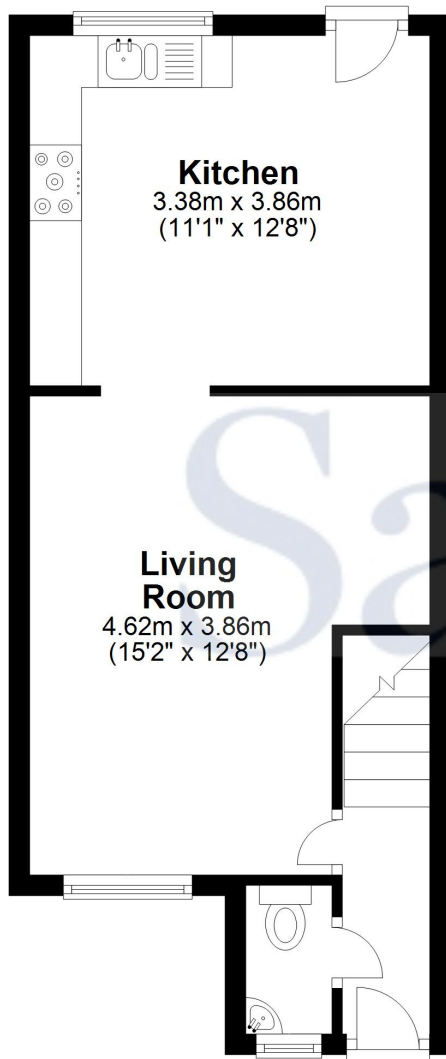
| Satchells



These particulars are a guide only and do not constitute an offer or a contract. The floor plan is for identification purposes only and not to scale. All measurements are approximate and should not be relied upon if ordering furniture, white goods and flooring etc. We have presented the property as we feel fairly describes it but before arranging a viewing or deciding to buy, should there be anything specific you would like to know about the property please enquire. Satchells have not tested any of the appliances or carried out any form of survey and advise you to carry out your own investigations on the state, condition, structure, services, title, tenure, and council tax band of the property. Some images may have been enhanced and the contents shown may not be included in the sale. Satchells routinely refer to 3rd party services for which we receive an income from their fee. If you would like us to refer you to one of these services please ask one of our staff who will pass your details on. We advise you check the availability of the property on the day of your viewing.

# Satchells

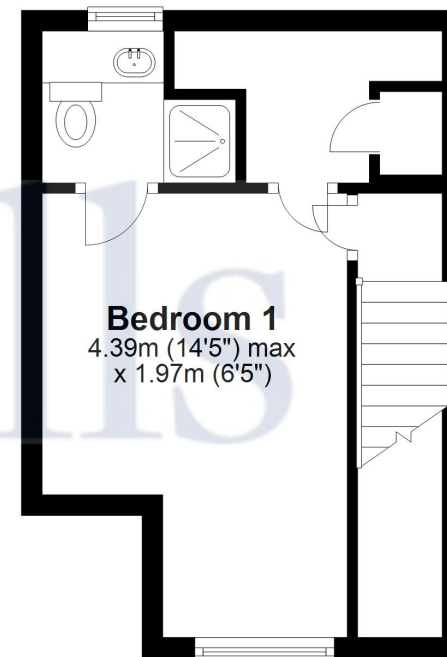
## Ground Floor



## First Floor



## Second Floor



For illustrative purposes only - NOT TO SCALE - Measurements shown are approximate. The size and position of doors, windows, appliances and other features are approximate.  
Plan produced using PlanUp.