



3 Academy Place

Isleworth, TW7 5FD

£330,000 Leasehold

Blue  
Estate Agents  
.co.uk

Telephone: 02085707900

Email: [info@blueestateagents.co.uk](mailto:info@blueestateagents.co.uk)





Blue Estate Agents



Blue Estate Agents

# Academy Place

Isleworth, TW7 5FD

Blue Estate Agents are delighted to present this beautifully appointed two-bedroom, two-bathroom apartment, ideally positioned on the second floor of the highly sought-after, gated Academy Place development in Isleworth. Offering a superb combination of space, style, and location, this property is perfect for first-time buyers, professionals, or investors looking for secure, well-connected living.

The apartment features two spacious double bedrooms, with the master bedroom benefiting from its own private en-suite shower room, in addition to a separate modern family bathroom suite. This makes for a total of two bathrooms, adding comfort and convenience for everyday living or shared occupancy. The modern open-plan kitchen and lounge create a sociable and light-filled living space—ideal for entertaining, relaxing, or working from home in comfort. Additional highlights include a separate garage for extra storage or parking, as well as allocated parking within the secure, gated development. Residents also benefit from an electronic communal entrance system, adding an extra layer of privacy and peace of mind.

The property further boasts access to attractive communal gardens, ideal for enjoying



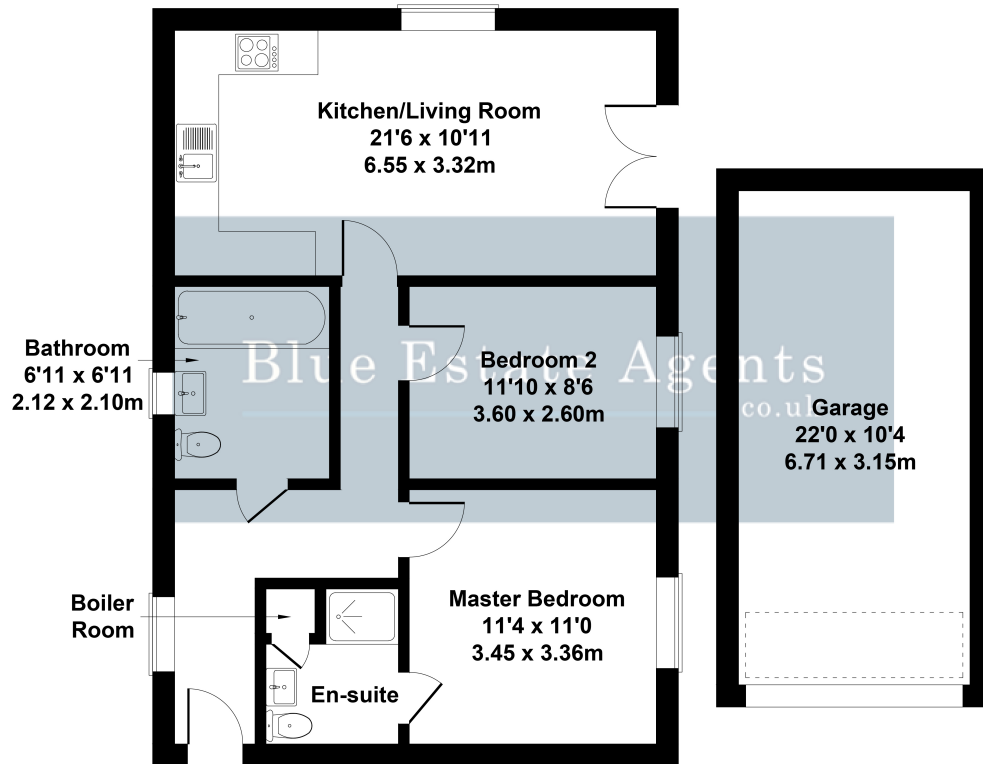
Blue Estate Agents





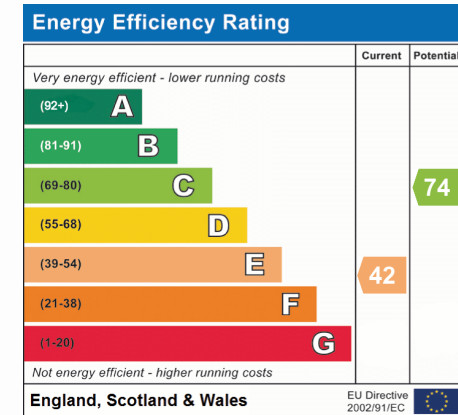
# Academy Place, Isleworth, TW7 5FD

Approximate Gross Internal Area  
915 sq ft -85 sq m



Not to Scale. Produced by The Plan Portal 2025  
For Illustrative Purposes Only.

Blue  
Estate Agents  
.co.uk



Blue Estate Agents  
315 Vicarage Farm Road, Hounslow  
Greater London  
TW5 0DR  
02085707900  
info@blueestateagents.co.uk