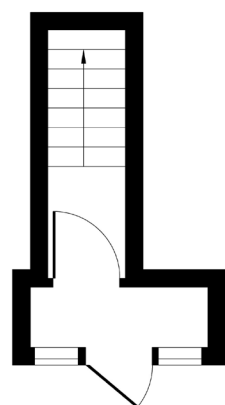
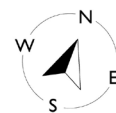
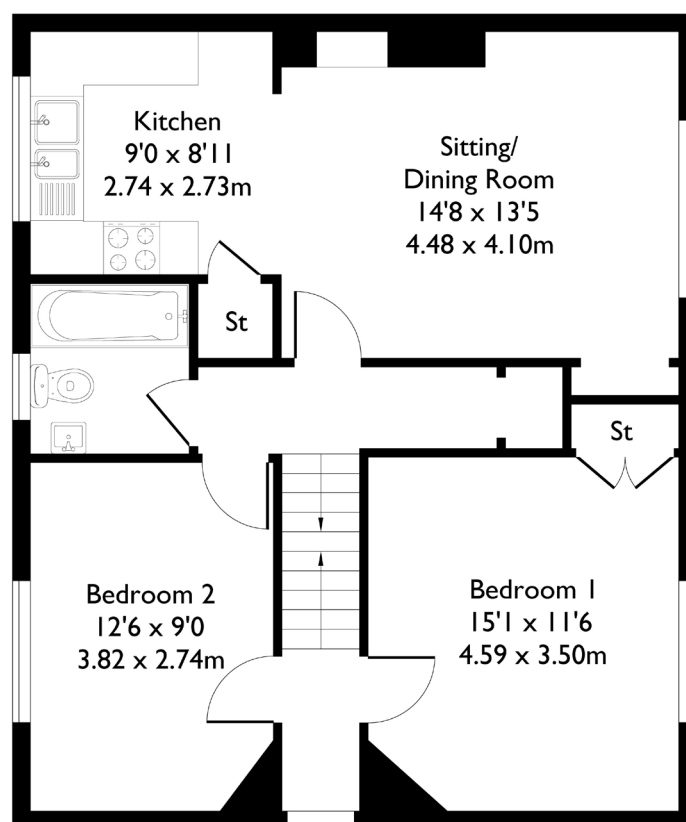


Townholm Crescent, London, W7

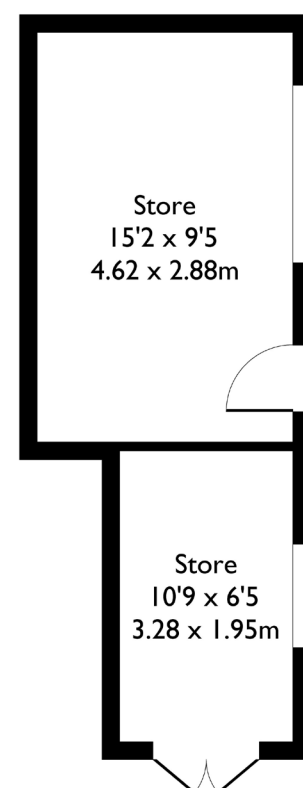
Approximate Floor Area = 111.1 sq m / 1196 sq ft
(Including Outbuilding)



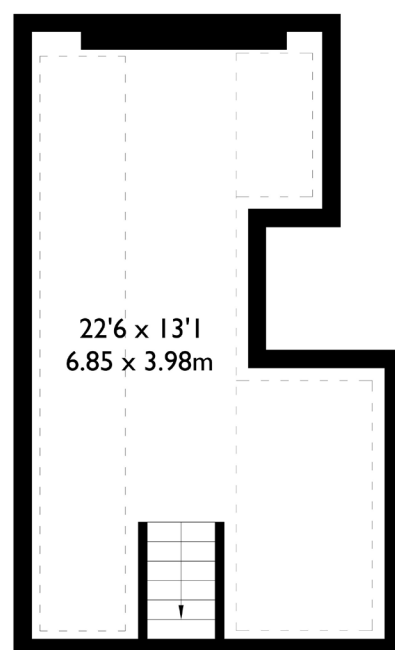
Ground Floor



First Floor



Outbuilding



Second Floor



2 BEDROOM FLAT

Townholm Crescent, W7

£450,000

Welcome to this well-presented two bedroom, one bathroom first-floor flat, ideally located in the heart of Olde Hanwell.

As you make your way upstairs, you're greeted by two spacious double bedrooms, a bright open-plan kitchen and living area, and a modern family bathroom. The principal bedroom features a cleverly concealed staircase leading to a generous loft space, offering excellent storage or potential for further use.

FEATURES

- Two Bedrooms
- One Bathroom
- Open Plan Kitchen/ Living
- Private Garden
- Boston Manor Station/ Hanwell Station (Elizabeth Line)
- Oaklands Primary School Catchment/ Elthorne Park High School
- EPC Rating D



2 BEDROOM FLAT

Townholm Crescent, W7 £450,000

One of the standout features of this property is the beautifully maintained private garden, complete with a versatile outhouse that has electricity — perfect for a home office, studio, or additional storage.

Situated just a short walk from the green open spaces of Elthorne Park and within 10 minutes of both Hanwell and Boston Manor stations, this flat offers excellent transport links and easy access to local amenities.

EPC Rating D.

