

2 Bedroom(s), Semi-Detached House, Freehold

Ascot Avenue, Cantley, Doncaster.



- 3D Virtual Tour Available
- Rear Enclosed Garden
- Lounge
- Family Bathroom
- Popular Location in Cantley

- No Chain
- Driveway
- Kitchen and Separate Utility Space
- Two Bedroom Semi Detached Home
- Local Amenities, Schools and Transport Links

£135,000
Sold STC

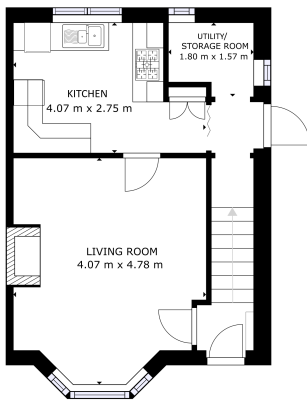
Book your viewing today Tel: 01302 247754

Owner's View

Nestled in the heart of Cantley, this well-located 2-bedroom semi-detached property on Ascot Avenue offers a fantastic opportunity for buyers seeking a home with renovation potential. Step inside to find a spacious lounge, a kitchen, and a handy utility/storage area, ideal for day-to-day convenience. Upstairs, there are two well-proportioned bedrooms and a family bathroom. Externally, the home features a front garden, a private, enclosed rear garden perfect for children or entertaining, and a driveway providing off-street parking. Located close to highly regarded schools, excellent transport links, and a range of local amenities, this property is a smart choice for those wanting to put their own stamp on a home in a sought-after area. Offered with no chain – early viewing is highly recommended.

Ground Floor

Floor Plan



Matterport

Kitchen



Lounge



Utility/Storage Space



First Floor



the property
hive

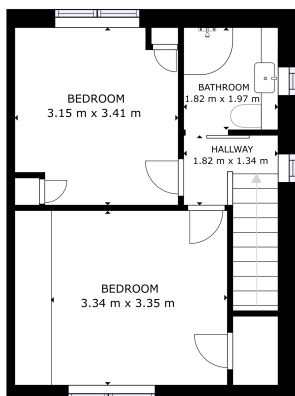
We make it happen.

Tel: 01302 247754

Email: info@thepropertyhive.co.uk

Web: www.thepropertyhive.co.uk

Floor Plan



FLOOR 1

OFFICE INTERNAL MEASUREMENTS
FLOOR 1: 26.47 m², FLOOR 2: 30.08 m²
TOTAL: 56.55 m²
NOTES: DIMENSIONS ARE APPROXIMATE, ACTUAL MAY VARY



Family Bathroom



Externals

Front Aspect



Rear Garden



Master Bedroom



Bedroom



Property Information

Council Tax Band - A

Utilities - Mains Gas, Mains Electricity, Mains Water

Water Meter - Yes

Tenure - Freehold

Solar Panels - No

Space Heating System - Gas Boiler with radiators

All measurements provided are approximate and should be verified before exchange of contracts. No appliances have been tested and should be checked to ensure they are in good working order.



Approximate Heating System Installation Date - 11/17/2017

Water Heating System - Gas boiler (Combi)

Approximate Water Heating Installation Date -

Boiler Location - Back bedroom

Approximate Electrical System Installation Date -

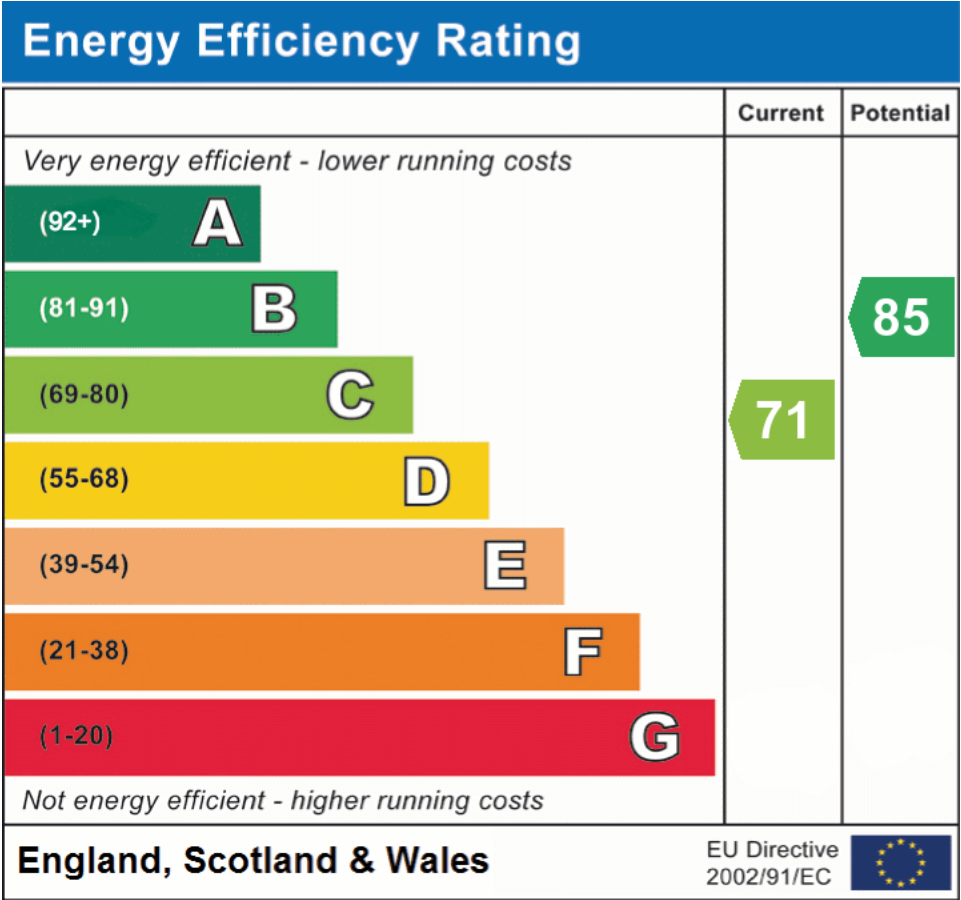
Permanent Loft Ladder - No

Loft Insulation - Yes

Loft Boarded out – No

Whilst every effort is made to ensure that the information contained in these particulars is reliable, they do not constitute or form part of an offer or any contract. The Property Hive accept no liability for the accuracy of the contents, and therefore they should be independently verified by prospective buyers or tenants before agreeing an offer. All measurements provided are approximate and should be verified before exchange of contracts. No appliances, fixtures or fittings have been tested and should be checked by the buyer before exchange of contracts to ensure they are in good working order.

Energy Performance Certificate



All measurements provided are approximate and should be verified before exchange of contracts. No appliances have been tested and should be checked to ensure they are in good working order.