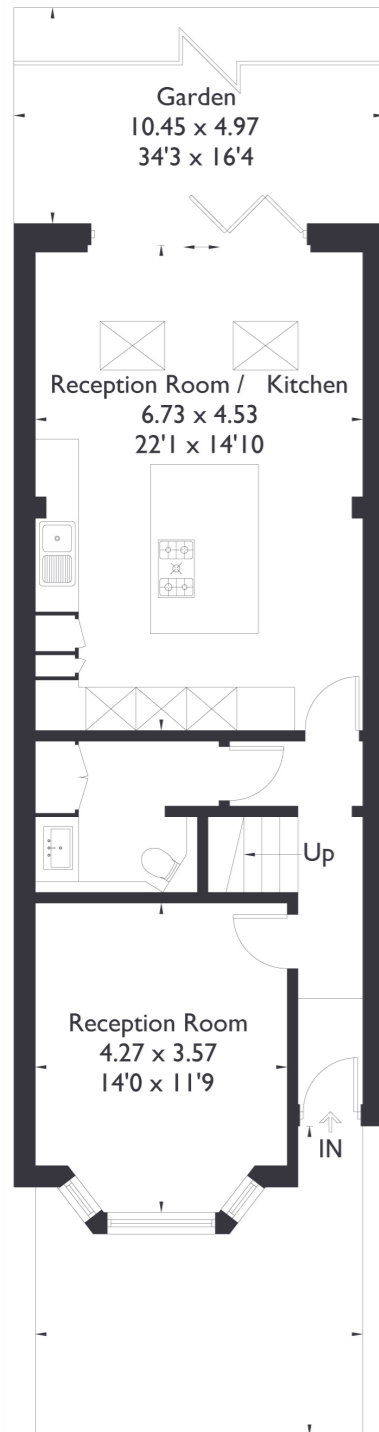


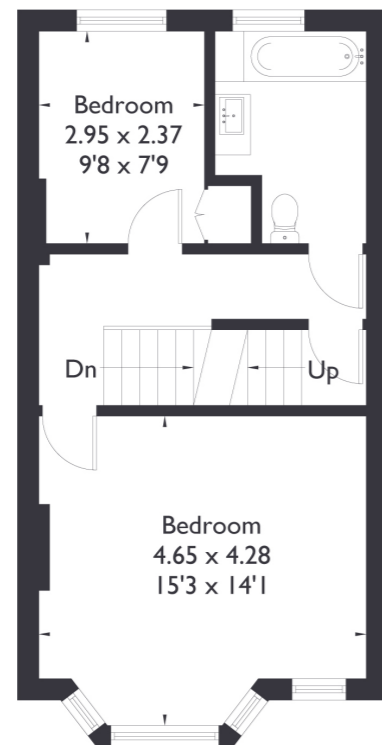
Westfield Road

Approximate Floor Area = 127.0 sq m / 1367 sq ft
(Excluding Eaves Storage)

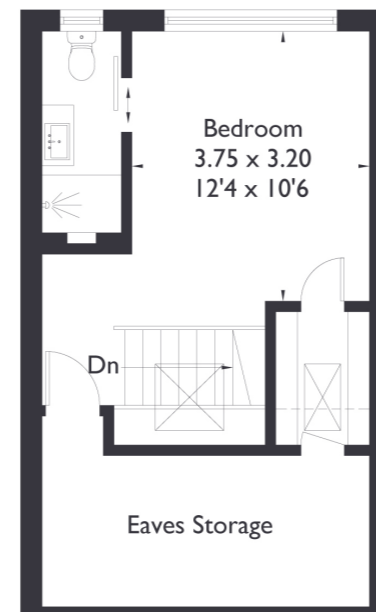


Ground Floor

= Reduced head height below 1.5m



First Floor



Second Floor



3 BEDROOM HOUSE

Westfield Road, W13

£950,000

Nestled in a prime location, this exceptional end-of-terrace house offers a perfect blend of modern luxury and timeless charm. Boasting three bedrooms and two bathrooms, including a convenient downstairs W/C/utility room, this home is designed for both comfort and functionality. Lovingly and skilfully presented by its current owners, its the perfect family home.

FEATURES

- End Of Terrace
- Three Bedrooms
- Two Bathrooms/Downstairs W/C
- Kitchen/Living Space
- West Ealing Station/Northfields Station
- Northfields Amenities
- EPC Rating D



3 BEDROOM HOUSE

Westfield Road, W13

The presentation of the property is truly exceptional, with an open plan kitchen/ living space.

Additionally, a separate reception room offers versatility and space for various living arrangements. Gorgeous bay windows adorn the rooms, flooding the interiors with natural light and enhancing the sense of space and openness. The highlight of the property is undoubtedly the bifold doors that lead to a contemporary garden, creating a seamless transition between indoor and outdoor living spaces. EPC Rating D.

