



**GREGORY BROWN**  
RESIDENTIAL SALES & LETTINGS

£195,000 Leasehold  
**FOR SALE**



## **Claremont Road, Staines-upon-Thames, Surrey, TW18 3AS**

SITUATED IN THIS SMALL SOUGHT AFTER DEVELOPMENT IS THIS WELL PRESENTED ONE BEDROOM APARTMENT IDEALLY LOCATED FOR EASY ACCESS TO BOTH STAINES & EGHAM TOWN CENTRES & LOCAL MOTORWAY NETWORKS. The property benefits from a spacious lounge/diner leading to modern fitted kitchen, double bedroom, modern white bathroom suite, allocated parking, gas radiator heating and an extended lease. No Onward Chain. Viewings Highly Recommended!

**Gregory Brown**

127a, High Street, Staines-upon-Thames, TW18 4PD

01784 451458

[staines@gregory-brown.co.uk](mailto:staines@gregory-brown.co.uk)

ROOM DESCRIPTIONS

\_\_\_\_\_

# FLOORPLAN

## 68 Claremont Road

Approximate Gross Internal Area = 33.7 sq m / 363 sq ft

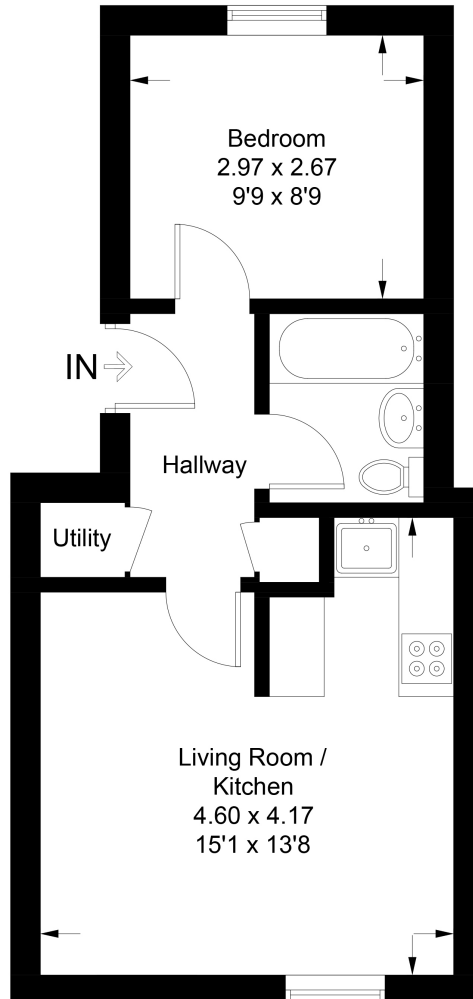


Illustration for identification purposes only, measurements are approximate, not to scale. Fourlabs.co © (ID1160772)

127a, High Street, Staines-upon-Thames, TW18 4PD

01784 451458

staines@gregory-brown.co.uk