

Homesdale Road,
Bromley, Kent. BR2 9FS

Tenure: Leasehold

2 Bedrooms | 1 Reception Room | 2 Bathrooms



AVAILABLE NOW - This stunning second-floor, two-bedroom apartment on Homesdale Road, BR2, offers modern, convenient living. As a modern build, it features a bright, open-plan living area with a sleek integrated kitchen. There are two well-proportioned bedrooms, with the master boasting an en-suite, plus a stylish family bathroom. Enjoy a private balcony and benefits like secure entry and potential allocated parking. Bromley South station and town centre amenities are all within easy reach, making this an ideal home for commuters and those seeking a vibrant lifestyle. EPC Rating: B

Enquiries To:

T: 020 8464 5555

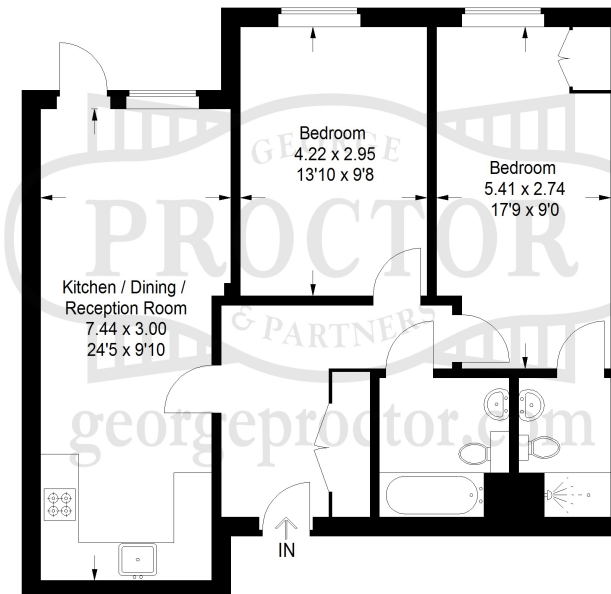
E: brsales@georgeproctor.com



Bromley Office

10-12 Chatterton Road, Bromley, Kent, BR2 9QN

Approximate Gross Internal Area
68.7 sq m / 739 sq ft



These particulars whilst believed to be accurate are made without responsibility on the part of the vendor or agents, their accuracy is not guaranteed nor do they form part of any contract and no warranty is given. Services or appliances have not been tested and no guarantee can be given as to their operation, buyers should seek professional advice where necessary. All measurements are approximate and may be rounded to the nearest three inches (10 cm). Floor plans, where shown, are indicative only. Any photographs included may be taken with the use of a wide angle lens. If there is a matter of particular interest please contact us for further information, especially before travelling any distance to view. Map reproduced by permission of Geographers A-Z Map Co Ltd. Licence No. A0514. This map is based upon Ordnance Survey maps with the permission of the controller of Her Majesty's Stationary Office.