



**Birkbeck Place  
Fleetwood  
Lancashire  
FY7 8EZ**

**Offers in Excess of £115,000**

**bettermove**



# Birkbeck Place Fleetwood

Bettermove are proud to present this 3 bedroom Semi-Detached House in the sought after area of Fleetwood.

The property benefits from double glazing, gas central heating throughout and has ample on street parking with the potential to have off street parking. The council tax band is A.

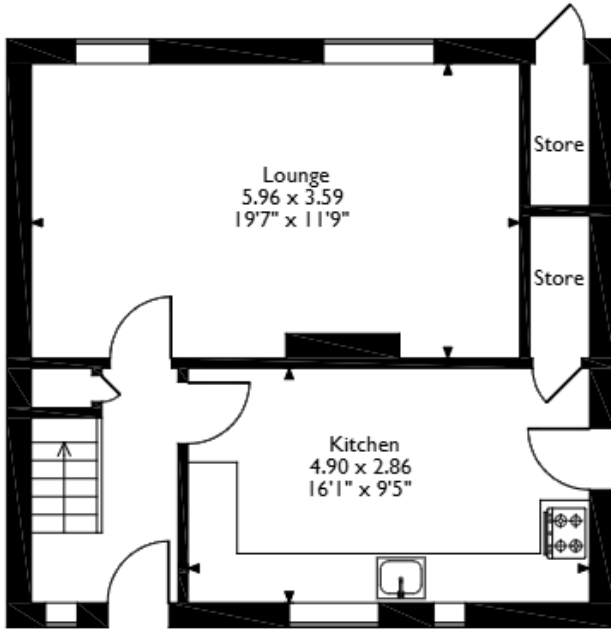
The interior of this property comprises a spacious living room and the fitted kitchen with dining area on the ground floor. The first floor consists of Three bedrooms and the family bathroom. The exterior boasts a private rear and front garden, perfect for enjoying the summer months.

Located in the popular town of Fleetwood, the property is close to a range of amenities, including shops, supermarkets, restaurants and pubs. Excellent transport connections can be found from many tram and rail stations, the A585 and Many local bus routes.

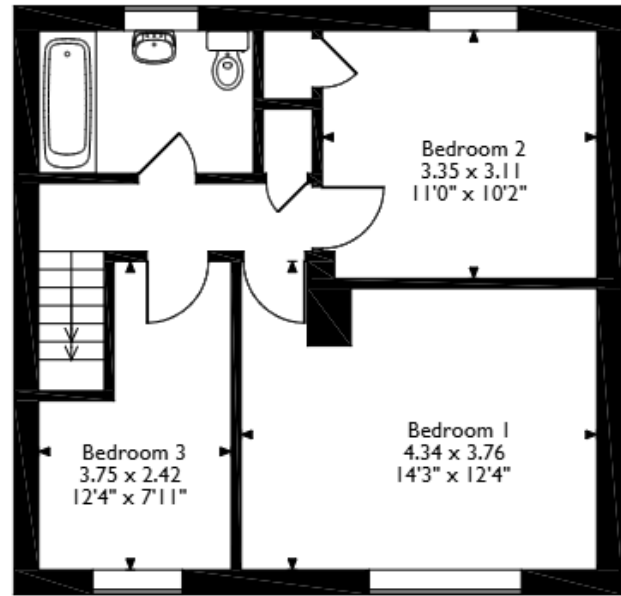
This exciting opportunity should not be missed! All enquiries can be made through Bettermove on 0330 004 0050.



Birkbeck Place, Fleetwood, Lancashire  
Approximate Gross Internal Area  
90 Sq M/ 968 Sq Ft



**Ground Floor**



**First Floor**

Please note that the location of doors, windows and other items are approximate and this floorplan is to be used for illustrative purposes only. Unauthorized reproduction is prohibited.





20-22 Bridge End, Leeds, LS1 4DJ  
t: 0330 004 0050 e: hello@bettermove.co.uk  
[www.bettermove.co.uk](http://www.bettermove.co.uk)