

9 Wynford Road, Frome, BA11 2DP

COOPER
AND
TANNER



£380,000 Freehold

A beautifully presented three-bedroom family home within a sought-after part of Frome.

9 Wynford Road, Frome, BA11 2DP

 3  1  1 EPC C

£380,000 Freehold

DESCRIPTION

9 Wynford Road has been the subject of a tasteful renovation, and an early viewing is highly recommended. The accommodation throughout the home is light, airy and well proportioned.

The front door opens into a spacious entrance hall which provides access into the living room, the kitchen/dining room, the downstairs cloakroom and stairs rise to the first floor.

The living room is a good size and an attractive woodburning stove takes centre stage, a perfect setting for a winters evening. At the back of the house is the most incredible, open planned kitchen/dining area, which is filled with natural light, enjoys access onto the gardens and makes an enjoyable sociable space for family life and anybody who enjoys entertaining. The kitchen is made up of a range of stylish grey units that are topped with sleek white worktops. There is an integrated oven/hob/extractor and room for further appliances. There is ample space for a table and chairs.

On the first floor there are three bedrooms, two good size doubles and a decent single. The family bathroom enjoys a bath and separate shower.

OUTSIDE

To the front of the house and to the side there is comfortable parking for two or three vehicles. There is a single garage and an extensive back garden.

The gardens include a large patio seating area for entertaining, a good size level lawn and a variety of mature plants and shrubs. The gardens are enclosed and child and pet friendly.

ADDITIONAL INFORMATION

Gas central heating. Mains gas, water, electricity and drainage are all connected.

LOCATION

Frome is a historic market town with many notable buildings and features the highest number of listed buildings in Somerset. Frome offers a range of shopping facilities, a sports centre, several cafés, a choice of pubs, local junior, middle and senior schools, several theatres, and a cinema.

Bath and Bristol are within commuting distance, and the local railway station connects at Westbury for London Paddington.





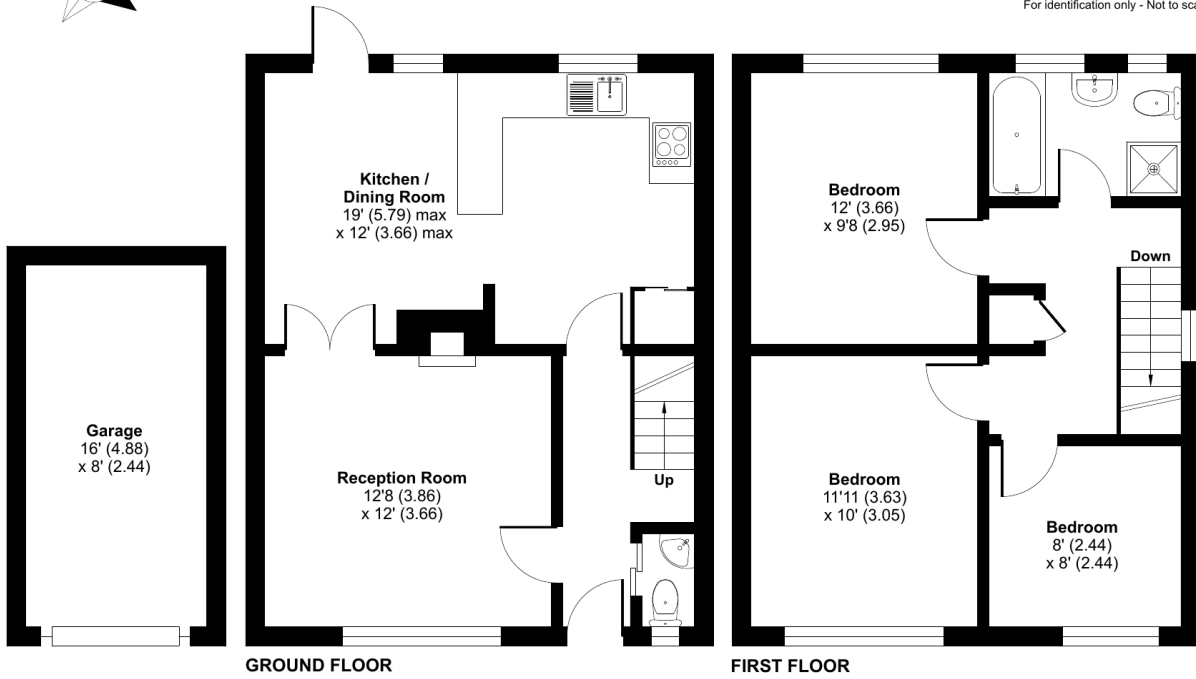
Wynford Road, Frome, BA11

Approximate Area = 932 sq ft / 86.6 sq m

Outbuilding = 128 sq ft / 11.9 sq m

Total = 1060 sq ft / 98.5 sq m

For identification only - Not to scale



Certified Property Measurer

Floor plan produced in accordance with RICS Property Measurement Standards incorporating International Property Measurement Standards (IPMS2 Residential). © nichecom 2024. Produced for Cooper and Tanner. REF: 1106174



FROME OFFICE

Telephone 01373 455060

6 The Bridge, Frome, Somerset, BA11 1AR

frome@cooperandtanner.co.uk

**COOPER
AND
TANNER**

Important Notice: These particulars are set out as a general outline only for the guidance of intended purchasers and do not constitute, nor constitute part of, an offer or contract. All descriptions, dimensions, reference to condition and necessary permissions for use and occupation, warranties and other details are given without responsibility and any intending purchasers should not rely on them as statements or representations of fact but must satisfy themselves by inspection or otherwise as to the correctness of each of them.

