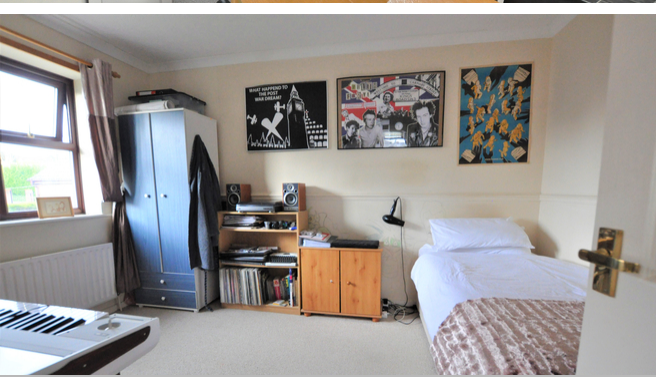




23 School Place, Bexhill-on-Sea, East Sussex,
TN40 2PX

£329,950

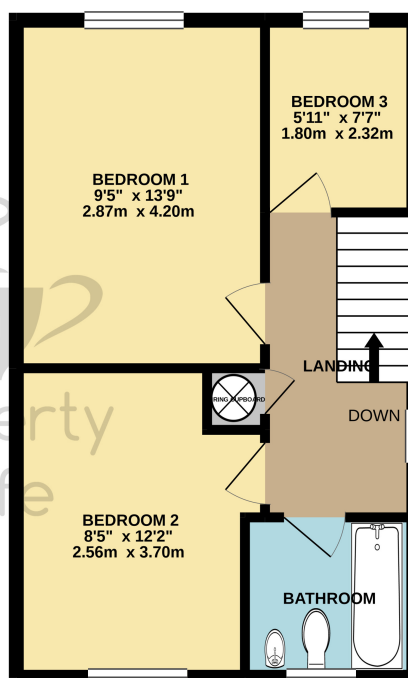
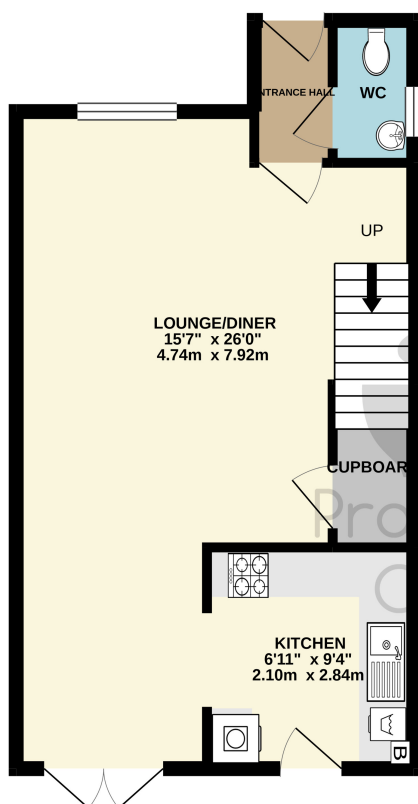


- Immaculate Three Bed Semi
- Spacious Through Lounge-Diner
- Modern Fitted Kitchen
- Modern Family Bathroom
- Three Good Size Bedrooms
- Central Heated & D. Glazed
- Sought After & Convenient Location
- West Facing Rear Garden
- Additional Side Plot With Potential
- Single Garage & Additional Parking
- Sought After Cul-De-Sac Location
- Well Presented & Neutral Decor
- Close Excellent Schools & Shops
- Viewing Highly Recommended



GROUND FLOOR
433 sq.ft. (40.2 sq.m.) approx.

1ST FLOOR
410 sq.ft. (38.1 sq.m.) approx.



TOTAL FLOOR AREA : 843 sq.ft. (78.4 sq.m.) approx.

Whilst every attempt has been made to ensure the accuracy of the floorplan contained here, measurements of doors, windows, rooms and any other items are approximate and no responsibility is taken for any error, omission or mis-statement. This plan is for illustrative purposes only and should be used as such by any prospective purchaser. The services, systems and appliances shown have not been tested and no guarantee as to their operability or efficiency can be given.
Made with Metropix 5/2020

