

Offers in the region  
of  
£100,000  
Leasehold



home4sale.co.uk  
rent.co.uk





### Features

- NO UPWARD CHAIN
- FIRST FLOOR RETIREMENT APARTMENT
- CONVENIENTLY SITUATED IN STREETLY
- LOUNGE/DINING ROOM WITH JULIETTE BALCONY
- KITCHEN
- DOUBLE BEDROOM
- SHOWER ROOM
- COMMUNAL AREAS AND GARDENS

### Summary of Property

\*\*\*WELL PRESENTED FIRST FLOOR RETIREMENT APARTMENT\*\*\*PRIME STREETLY LOCATION WITH TRANSPORT LINKS AND AMENITIES\*\*\*AMPLE LOUNGE/DINING ROOM WITH JULIETTE BALCONY\*\*\*KITCHEN\*\*\*DOUBLE BEDROOM WITH FITTED WARDROBES\*\*\*SHOWER ROOM\*\*\*COMMUNAL GROUNDS\*\*\*LIFT ACCESS\*\*\*COMMUNAL AREAS/RESIDENTS LOUNGE/LAUNDRY/KITCHEN AND GUEST SUITE (for hire)\*\*\*NO UPWARD CHAIN\*\*\*

A fabulous opportunity to purchase this well presented first floor retirement apartment situated conveniently in Streetly within easy reach of amenities and transport links.

Accommodation in brief comprises, secure entry system and lift access to the property which includes a private hallway, ample lounge/dining room with Juliette balcony off, kitchen, double bedroom with built in wardrobes and shower room.

Within Hunters Court are communal grounds, communal lounge with library, kitchen area, laundry room and a guest suite available for hire there is communal parking to fore.

## Room Descriptions

### Approach

Approached via secure entry system, lift access and door giving access to the accommodation.

### Entrance Hallway

Having a storage cupboard and doors giving access to all rooms.

### Lounge/Dining Room

17' 07" x 11' 02" (5.36m x 3.40m)

### Kitchen

8' 11" x 5' 08" (2.72m x 1.73m)

### Bedroom

15' 04" x 10' 04" (4.67m x 3.15m)

### Shower Room

6' 09" x 5' 06" (2.06m x 1.68m)

### Tenure

We are advised there are appoximately 104 years remaining on the lease.

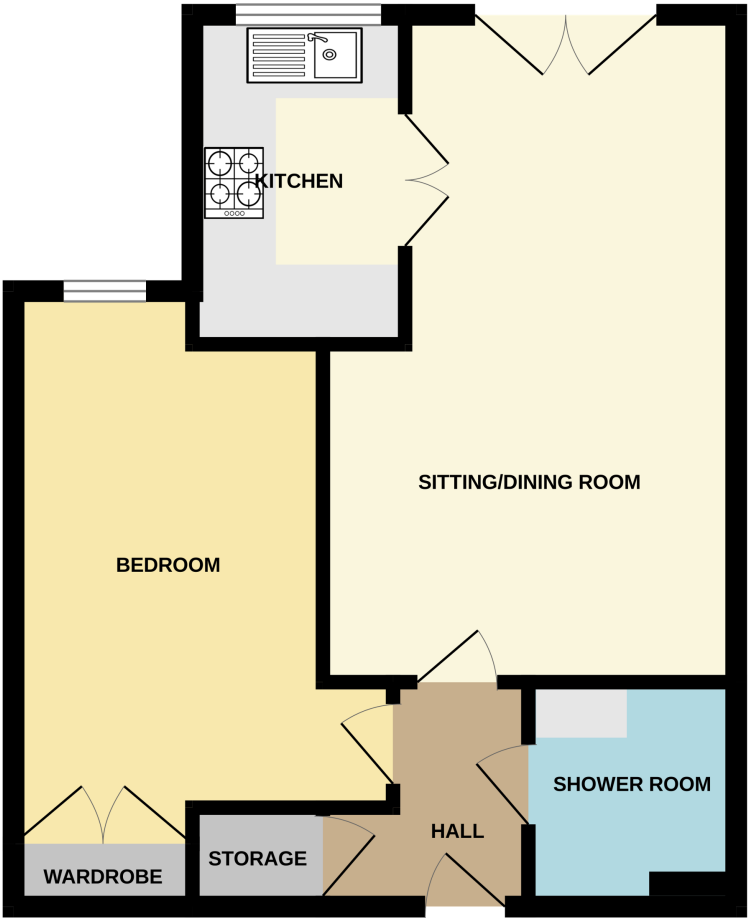
Service Charge - £1268.00 per half year.

Communal Charges and admin fees £192.50 per half year.



Floorplan

GROUND FLOOR



Whilst every attempt has been made to ensure the accuracy of the floorplan contained here, measurements of doors, windows, rooms and any other items are approximate and no responsibility is taken for any error, omission or mis-statement. This plan is for illustrative purposes only and should be used as such by any prospective purchaser. The services, systems and appliances shown have not been tested and no guarantee as to their operability or efficiency can be given.  
Made with Metropix ©2025