



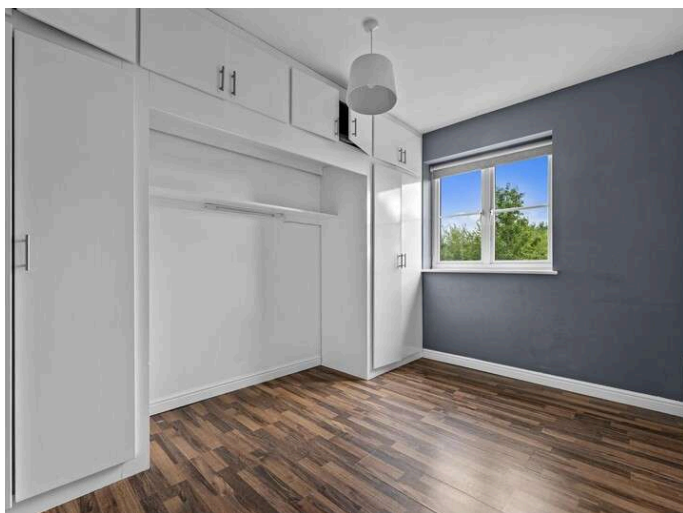
Solicitors & Estate Agents

43

Pitmedden Road, Dunfermline, KY11 8FJ



Working harder for you



3 bedrooms



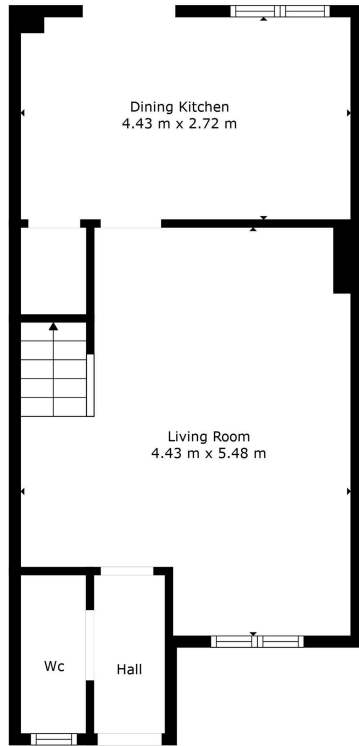
1 public



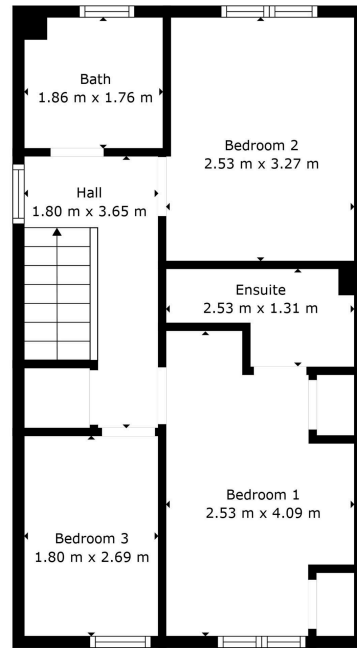
2 bathrooms



- + A modern three bedroom family home located within a popular residential location within the eastern expansion of Dunfermline
- + Recently decorated
- + Convenient for local amenities including a Tesco superstore, Duloch Leisure Centre, Fife Leisure Park and transport links via the M90 motorway and Halbeath Park and Ride.
- + Primary schooling within walking distance and several secondary schools within Dunfermline and Inverkeithing
- + Entrance hall with WC leading through to living room
- + Spacious dining kitchen with ample floor and wall mounted storage with French doors leading onto gardens. The kitchen comes well equipped with a variety of white goods, worktop space and room for a table and chairs
- + The master bedroom benefits from en suite shower room and built in storage
- + Two further bedrooms and family bathroom with three piece suite
- + Gas central heating system and double glazing
- + Located up a private cul-de-sac with lovely gardens to the rear
- + Driveway and storage shed
- + Excellent first family home within a popular residential setting and viewing is highly recommended



Floor 1



Floor 2



Floor Plan Created By Cubicasa App. Measurements Deemed Highly Reliable But Not Guaranteed.



Living Room	4.43 m x 5.48 m / 14'6" x 18'0"	Bathroom	1.86 m x 1.76 m / 6'1" x 5'9"
Dining Kitchen	4.43 m x 2.72 m / 14'6" x 8'11"	Ensuite	2.53 m x 1.31 m / 8'4" x 4'4"
Bedroom 1	2.53 m x 4.09 m / 8'4" x 13'5"		
Bedroom 2	2.53 m x 3.27 m / 8'4" x 10'9"		
Bedroom 3	1.80 m x 2.69 m / 5'11" x 8'10"		



Sharing is caring!

6/8 Bonnar Street,
Dunfermline KY12 7JR

T: 01383 629720 F: 01383 621333, DX DF69

espc

W: maloco.co.uk