



Rosslyn Road, Billericay, Essex, CM12 9JN

£650,000



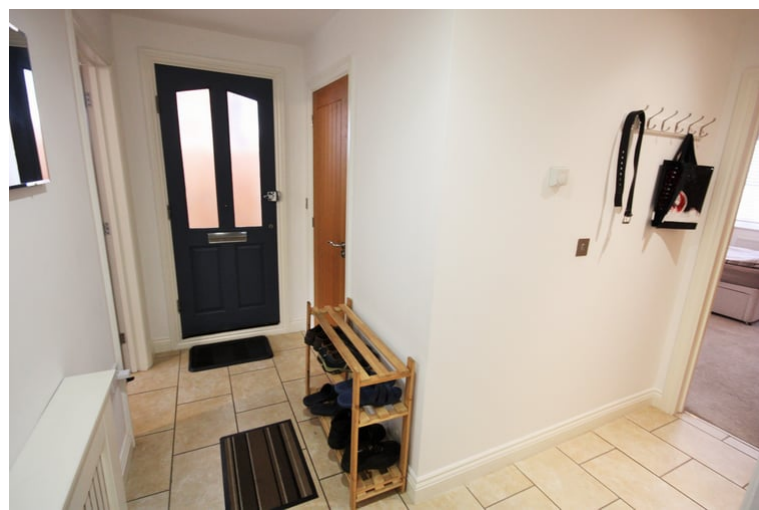
BEAUTIFULLY APPOINTED 2 BEDROOM DETACHED BUNGALOW IN PREMIER ROAD, CLOSE TO HIGH STREET AND STATION. The superbly presented accommodation on offer comprises of large fitted kitchen / diner and good size lounge, two double bedrooms with Jack and Jill ensuite to Master and shower ensuite to bedroom two. There is a well appointed fitted kitchen / diner with eye and base level units with work surfaces over with solid wood work surfaces over, inset sink unit, built in electric oven with gas hob and extractor fan over, integrated fridge/freezer, space for washing machine, dishwasher, wall mounted combination boiler and French doors onto the rear garden. The lounge has double glazed windows to three aspects. Externally there is a mature rear garden laid to lawn and patio area. The property is approached via a long front garden approaching 50 foot in depth.

- LOCATED IN A DESIRABLE LOCATION IN BILLERICAY
- ENSUITE SHOWER ROOM TO BEDROOM TWO
- SPACIOUS FITTED KITCHEN / DINER
- WELL MAINTAINED THROUGHOUT
- TWO BEDROOM DETACHED BUNGALOW
- JACK & JILL BATHROOM
- NO ONWARD CHAIN



Interior

Entrance Hall



3.10m x 3.00m (10' 2" x 9' 10")

Lounge



5.56m x 3.40m (18' 3" x 11' 2")

Fitted Kitchen / Diner



5.72m x 3.00m (18' 9" x 9' 10")

Bedroom One



3.86m x 3.40m (12' 8" x 11' 2")

En Suite Shower Room



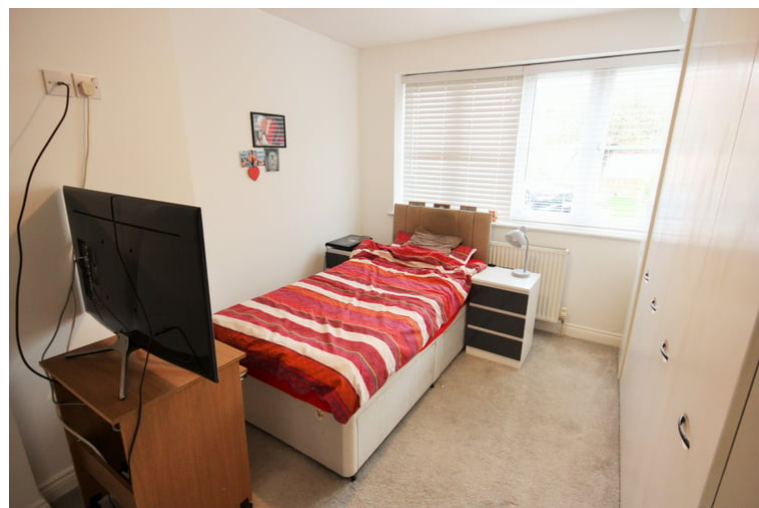
1.68m x 1.47m (5' 6" x 4' 10")

Jack & Jill Bathroom



2.18m x 1.73m (7' 2" x 5' 8")

Bedroom Two



4.88m x 3.28m (16' 0" x 10' 9")

Exterior

Rear Garden



Patio area with remainder laid to lawn. Side access both sides.

Front Garden



Driveway with space for multiple vehicles.

PROPERTY MISDESCRIPTIONS ACT 1991

The Agents not tested any apparatus, fixtures and fittings, or services, so cannot verify that they are in working order or fit for the purpose. The buyer is advised to obtain verification from his or her Professional Adviser. Refernces to the Tenure of the property are based on information supplied by the Vendor. The agent has not had sight of the title documents. The buyer is advised to obtain verification from their Solicitor. You are advised to check the availability of any property before travelling any distance to view.