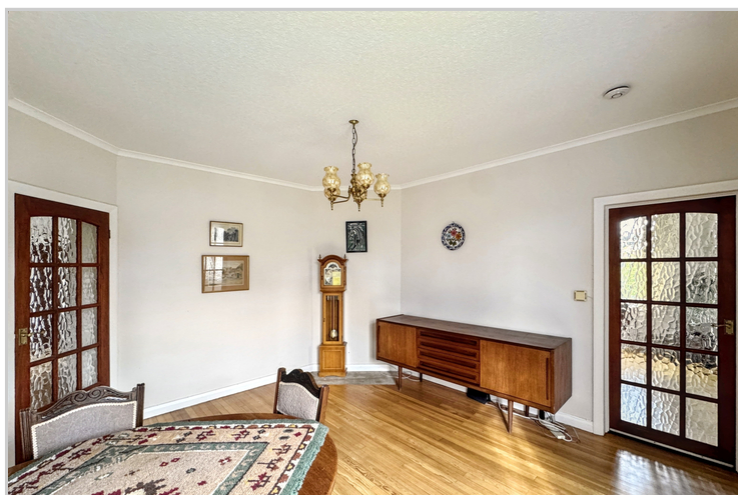
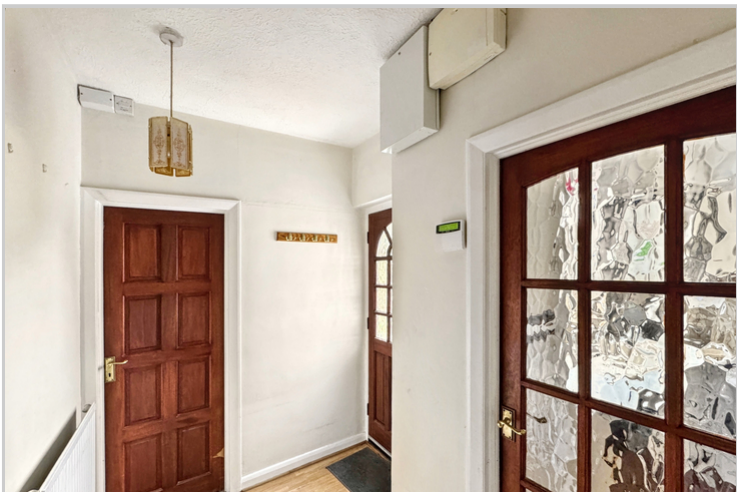


29 Homesdale Road, Petts Wood, Orpington, Kent, BR5 1JS

Property Images







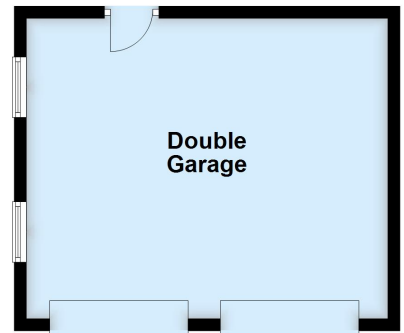
Ground Floor

Approx. 120.1 sq. metres (1292.4 sq. feet)



Outbuilding

Approx. 29.8 sq. metres (320.2 sq. feet)



Total area: approx. 149.8 sq. metres (1612.7 sq. feet)

This plan is for general layout guidance and may not be to scale.
Plan produced using PlanUp.