

THE ESTATE AGENTS
1977



Kentstone Close, Northampton, West Northamptonshire NN2 8UJ
Offers Over £400,000 -



PROPERTY DESCRIPTION

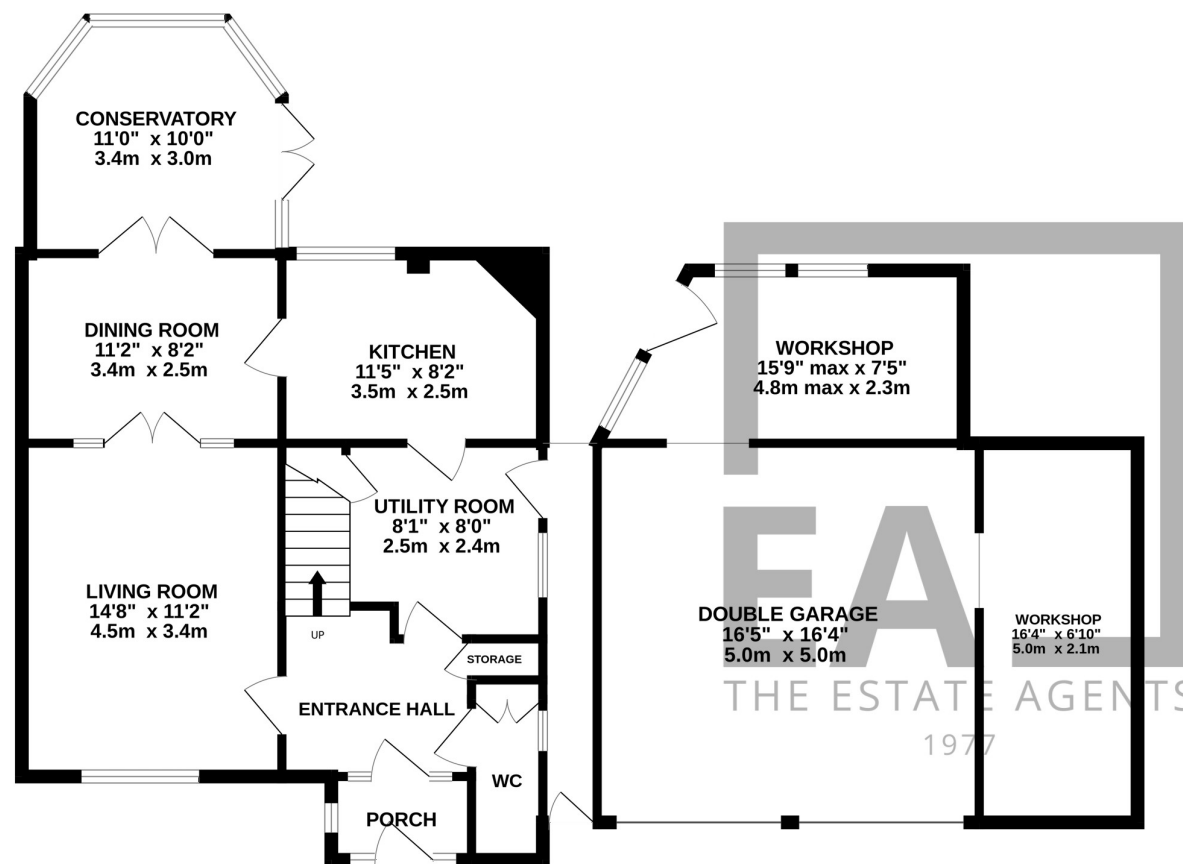
The Estate Agents are pleased to present this fantastic four bedroom detached property at the end of a small cul-de-sac in a desirable and sought after area of Kingsthorpe, just off the Welford Rd. The Spacious accommodation briefly comprises; Entrance porch leading to a welcoming hallway, living room opening to the dining room, kitchen, utility, conservatory and cloakroom. On the first floor are four bedrooms, en suite to master and family bathroom. Outside the property benefits from ample off road parking and a generous rear garden, with superb entertaining areas. What really sets this property apart is the double garage with two workshop areas.

Kentstone Close is ideally situated within easy reach of local amenities, major supermarkets, schools and some lovely Villages.

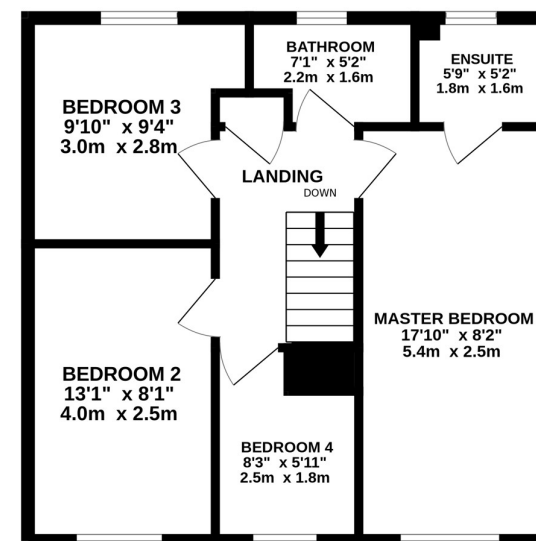
POINTS OF INTEREST

- Four Bedroom Detached
- Sought After Area
- En Suite
- Conservatory
- Cloakroom
- Superb Double Garage With Two Workshop Areas
- Garage Has Potential To Convert Into An Annexe Subject To Relevant Permissions
- Generous Rear Garden
- Ample Off Road Parking
- Cul-De-Sac- Location

GROUND FLOOR
1148 sq.ft. (106.7 sq.m.) approx.



1ST FLOOR
496 sq.ft. (46.1 sq.m.) approx.



TOTAL FLOOR AREA : 1645 sq.ft. (152.8 sq.m.) approx.

Whilst every attempt has been made to ensure the accuracy of the floorplan contained here, measurements of doors, windows, rooms and any other items are approximate and no responsibility is taken for any error, omission or mis-statement. This plan is for illustrative purposes only and should be used as such by any prospective purchaser. The services, systems and appliances shown have not been tested and no guarantee as to their operability or efficiency can be given.

Made with Metropix ©2025