



Ermine Court, Ermine Street, Huntingdon PE29 7SD

Guide Price £120,000

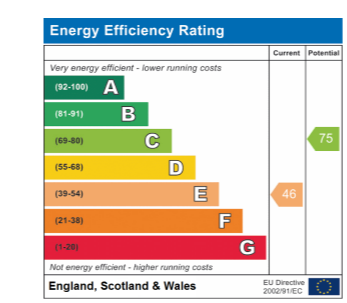
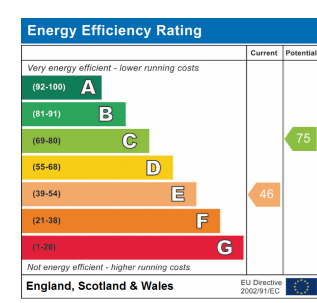
- Pleasant Second Floor Apartment
- One Double Bedroom
- Re-Fitted Kitchen
- Re-Fitted Bathroom Suite
- Ideal Buy To Let Or First Time Purchase
- Convenient Town Centre Location
- Easy Access To Railway Station
- Designated Parking Provision



Ermine Court, Ermine Street, Huntingdon PE29 7SD

Guide Price £120,000

- Pleasant Second Floor Apartment
- One Double Bedroom
- Re-Fitted Kitchen
- Re-Fitted Bathroom Suite
- Ideal Buy To Let Or First Time Purchase
- Convenient Town Centre Location
- Easy Access To Railway Station
- Designated Parking Provision



Panel Door Accessing

Entrance Hall

Large walk in cloaks cupboard.

Living Room

17' 9" x 11' 10" (5.41m x 3.61m)

Electric panel heater, UPVC window to front aspect, TV point, telephone point.

Family Bathroom

Re-fitted in a three piece white suite comprising low level WC, panel bath with folding screen and hand mixer shower, re-tiled surrounds, natural stone contour border tiling, pedestal wash hand basin with mixer tap, extractor, chrome heated towel rail, vinyl floor covering.

Kitchen

14' 9" x 5' 7" (4.50m x 1.70m)

Re-fitted in a range of base and wall mounted cabinets finished in pastel cream with work surfaces and re-tiled surrounds, electric cooker point, appliance spaces, two UPVC windows to front aspect.

Bedroom

10' 2" x 8' 10" (3.10m x 2.69m)

UPVC window to front aspect.

Outside

There is a designated parking space to the rear.

Tenure

Leasehold

100 Years - Renewed in 21.01.2014

91 Remaining - expires 20.01.2114

Ground Rent - £250.00 per annum

Management Charge - £1,213.95

Council Tax Band - A

Panel Door Accessing

Entrance Hall

Large walk in cloaks cupboard.

Living Room

17' 9" x 11' 10" (5.41m x 3.61m)

Electric panel heater, UPVC window to front aspect, TV point, telephone point.

Family Bathroom

Re-fitted in a three piece white suite comprising low level WC, panel bath with folding screen and hand mixer shower, re-tiled surrounds, natural stone contour border tiling, pedestal wash hand basin with mixer tap, extractor, chrome heated towel rail, vinyl floor covering.

Kitchen

14' 9" x 5' 7" (4.50m x 1.70m)

Re-fitted in a range of base and wall mounted cabinets finished in pastel cream with work surfaces and re-tiled surrounds, electric cooker point, appliance spaces, two UPVC windows to front aspect.

Bedroom

10' 2" x 8' 10" (3.10m x 2.69m)

UPVC window to front aspect.

Outside

There is a designated parking space to the rear.

Tenure

Leasehold

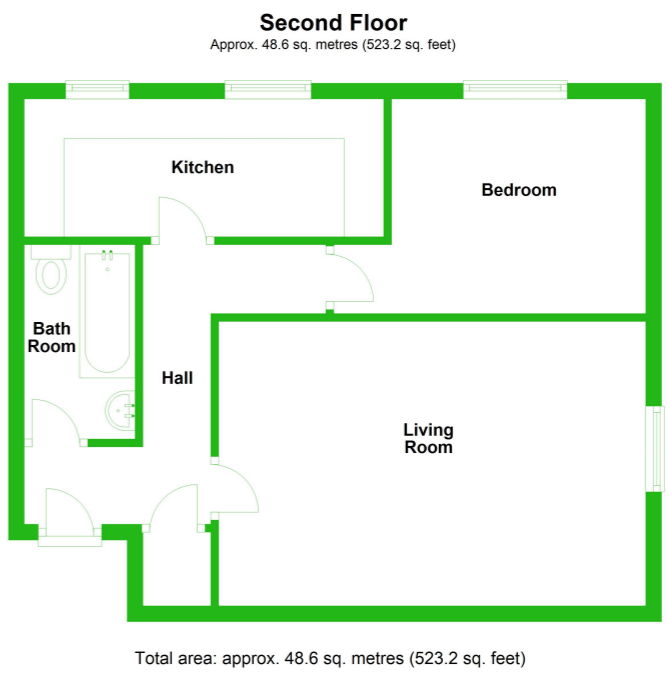
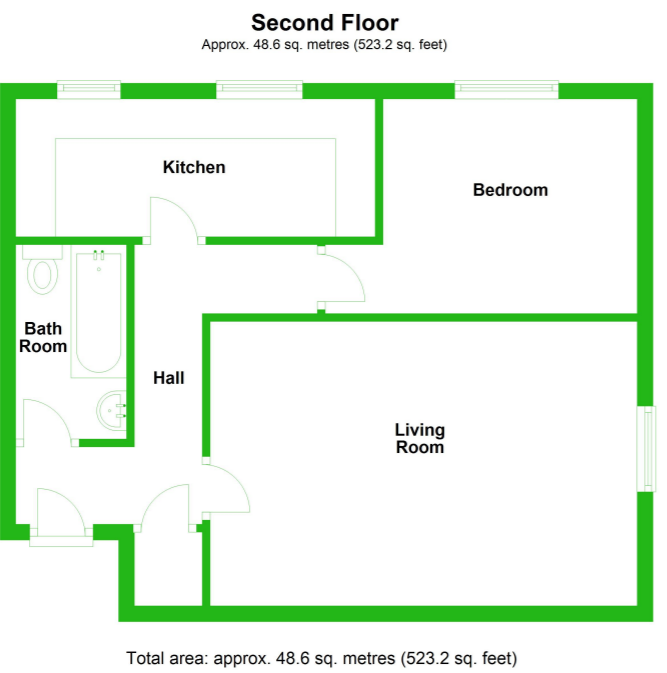
100 Years - Renewed in 21.01.2014

91 Remaining - expires 20.01.2114

Ground Rent - £250.00 per annum

Management Charge - £1,213.95

Council Tax Band - A



Huntingdon 60 High Street Huntingdon 01480 414800	Kimbolton 24 High Street Kimbolton 01480 860400	St Neots 32 Market Square St. Neots 01480 406400	Mayfair Office Cashel House 15 Thayer St, London 0870 1127099
-------------------------------------------------------------------	-----------------------------------------------------------------	------------------------------------------------------------------	-------------------------------------------------------------------------------

Peter Lane & Partners, for themselves as agents for the Vendors or Lessors of this property give notice that these particulars are produced in good faith and are to act purely as a guide to the property and therefore do not constitute any part of any contract. Peter Lane & Partners or any employee therefore do not have the authority to make or give any warranties, guarantees or representation whatsoever in relation to this property.

Huntingdon 60 High Street Huntingdon 01480 414800	Kimbolton 24 High Street Kimbolton 01480 860400	St Neots 32 Market Square St. Neots 01480 406400	Mayfair Office Cashel House 15 Thayer St, London 0870 1127099
-------------------------------------------------------------------	-----------------------------------------------------------------	------------------------------------------------------------------	-------------------------------------------------------------------------------

Peter Lane & Partners, for themselves as agents for the Vendors or Lessors of this property give notice that these particulars are produced in good faith and are to act purely as a guide to the property and therefore do not constitute any part of any contract. Peter Lane & Partners or any employee therefore do not have the authority to make or give any warranties, guarantees or representation whatsoever in relation to this property.