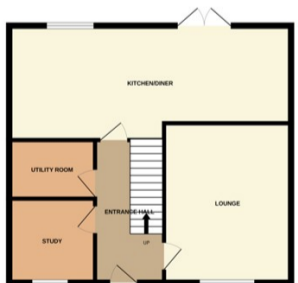




**Bourne**

**£370,000**



**\*\*\*GENEROUS SIZE TOWNHOUSE \*\*\***Offers are invited in excess of £370,000 for this well maintained spacious family home. Situated in the popular new development of Elsea Park, close to local amenities and Bourne Grammar school. Spread over three floors with five double bedrooms, two receptions, three bathrooms, kitchen/diner and utility/cloakroom. Outside there is a South facing mature rear garden with seating area and decking, there is a driveway to the side for two vehicles leading to the single garage. The property is situated in a prime position overlooking a green area with the rear backing onto gardens. This property would suit any growing family looking for more space at a realistic affordable price. To fully appreciate this property viewings are highly recommended. EPC Energy rating B/Council tax band E.