

# 4 Redland Terrace,

Frome, BA11 1HT

COOPER  
AND  
TANNER



## OIEO £500,000 Freehold

Tucked away along a quiet lane in the heart of Frome, this beautifully renovated four-bedroom period townhouse combines timeless character with exceptional modern design. Arranged over three floors, the home offers generous and flexible accommodation, a south-west facing garden, and a bespoke garden studio, all finished to an impeccable standard and ready to move straight into.

# 4 Redland Terrace, Frome, BA11 1HT

 4  2  2 EPC D

OIEO £500,000 Freehold

## DESCRIPTION.

This beautifully renovated four-bedroom period townhouse offers an exquisite blend of character and contemporary design. Arranged over three floors and finished to an exceptionally high standard, the property provides generous accommodation in a welcoming community.

The front door opens directly into a bright and airy dream kitchen, thoughtfully designed with fully integrated appliances including a wine fridge and induction hob, and a peninsular island with breakfast bar. A lantern roof light bathes the room in natural light, creating a striking centrepiece to the home. The kitchen flows seamlessly into the dining room, a warm and elegant space with wooden flooring, bespoke alcove cabinetry, and an exposed fireplace, complemented by useful understairs storage. Beyond lies the sitting room, a wonderfully cosy retreat featuring a sash window overlooking the garden, with designer lighting, and a wood-burning stove set within a rustic brick surround.

On the first floor, the master bedroom is a serene and stylish sanctuary, complete with fireplace, fitted storage, and wooden flooring. Also on this level is a versatile second bedroom, ideal as a nursery, dressing room, or study, alongside the family bathroom, beautifully appointed with a claw-foot bath, traditional sanitaryware, feature tiling, and subtle blush-toned décor.

The second floor provides two further double bedrooms, each with storage and charming outlooks, served by a chic shower room finished with striking blue-gloss tiling, generous surface space, and illuminated by a skylight.

## OUTSIDE

Outside the garden is a particular highlight, fully enclosed and south-west facing to enjoy the best of the afternoon and evening sun. Colourful planting borders a patio seating area, while at the rear stands a bespoke garden studio with green roof and bi-folding doors making an inspiring home office, studio, or retreat.

## ADDITIONAL INFORMATION

Gas fired central heating. All mains services are connected.

## LOCATION

Frome is a historic market town with many notable buildings and features the highest number of listed buildings in Somerset. Frome offers a range of shopping facilities, a sports centre, several cafés, a choice of pubs, local junior, middle and senior schools, several theatres, and a cinema. Bath and Bristol are within commuting distance, and the local railway station connects at Westbury for London Paddington.







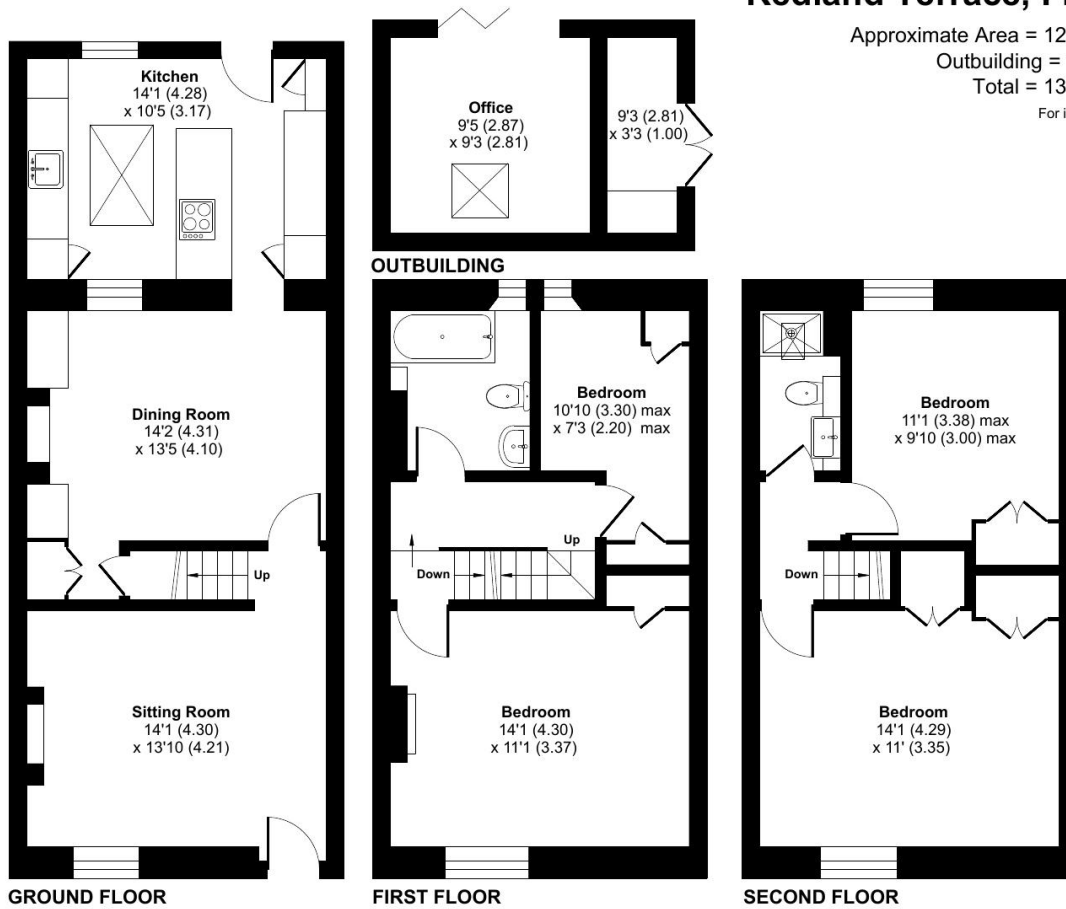
## Redland Terrace, Frome, BA11

Approximate Area = 1236 sq ft / 114.8 sq m

Outbuilding = 117 sq ft / 10.8 sq m

Total = 1353 sq ft / 125.6 sq m

For identification only - Not to scale



Floor plan produced in accordance with RICS Property Measurement 2nd Edition, incorporating International Property Measurement Standards (IPMS2 Residential). © nitchcom 2025. Produced for Cooper and Tanner. REF: 1353305



### FROME OFFICE

Telephone 01373 455060

6 The Bridge, Frome, Somerset, BA11 1AR

[frome@cooperandtanner.co.uk](mailto:frome@cooperandtanner.co.uk)

**COOPER  
AND  
TANNER**

Important Notice: These particulars are set out as a general outline only for the guidance of intended purchasers and do not constitute, nor constitute part of, an offer or contract. All descriptions, dimensions, reference to condition and necessary permissions for use and occupation, warranties and other details are given without responsibility and any intending purchasers should not rely on them as statements or representations of fact but must satisfy themselves by inspection or otherwise as to the correctness of each of them.



**RICS**



**OnTheMarket**