

FOR SALE

£925,000

Cunningham Close, Caldy, Wirral. CH48 2JY



Exclusive Family Home! This incredible four bedroom detached residence is set in the heart of Caldy and is the pinnacle of family living. Tucked away in a quiet cul-de-sac, this immaculately-presented abode has a south westerly facing garden and sits on a generously sized plot.

## Ground Floor

Entrance Porch

Entrance Hallway

Lounge

12' 2" x 18' 7" (3.71m x 5.66m)

Kitchen/Diner

20' 9" x 12' 6" (6.32m x 3.81m)

Play Room

10' 5" x 9' 1" (3.17m x 2.77m)

WC

Utility Room

8' 1" x 7' 2" (2.46m x 2.18m)

Conservatory

8' 1" x 9' 4" (2.46m x 2.84m)

Snug

12' 1" x 10' 9" (3.68m x 3.28m)

Office

12' 1" x 6' 11" (3.68m x 2.11m)

## First Floor

Landing

Bedroom

12' 1" x 18' 7" (3.68m x 5.66m)

Wardrobe

En-Suite

7' 0" x 6' 1" (2.13m x 1.85m)

Bedroom

11' 9" x 10' 11" (3.58m x 3.33m)

Bedroom

11' 9" x 10' 9" (3.58m x 3.28m)

Bedroom

8' 8" x 8' 11" (2.64m x 2.72m)

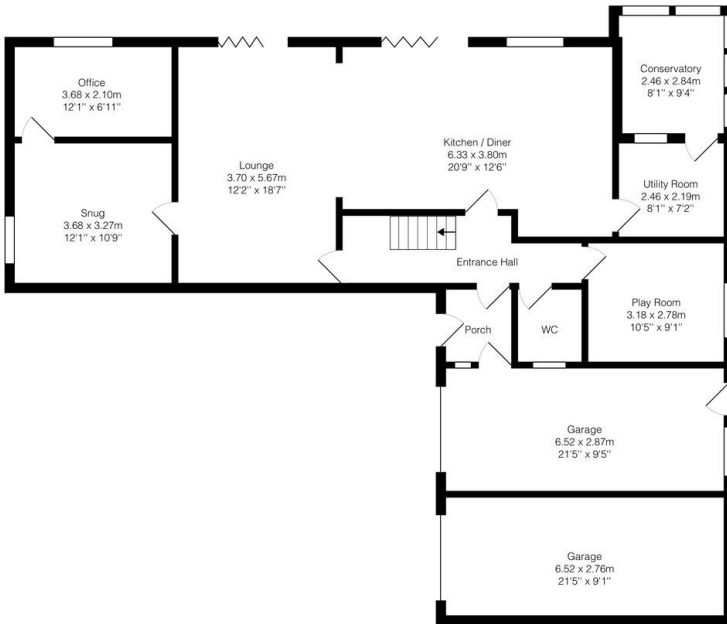
Bathroom

5' 4" x 8' 11" (1.63m x 2.72m)

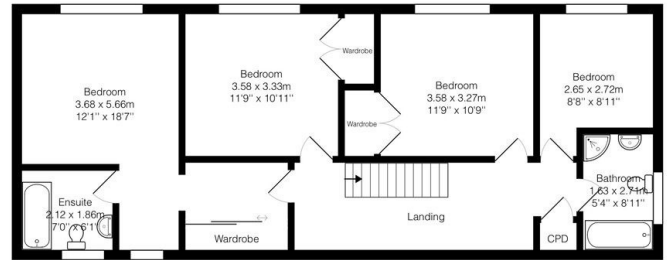




Ground Floor



1st Floor



Total Area: 187.8 m<sup>2</sup> ... 2022 ft<sup>2</sup> (excluding garage)  
 All measurements are approximate and for display purposes only.

