



5 Hendrie Crescent, East Wemyss, Kirkcaldy, Fife, KY1 4LF

Immaculately Presented, Three-Bedroom, Semi-Detached Family Home

Up to date price and viewing info at mov8realestate.com/property

espc rightmove  Zoopla
find your happy

Property Description

Immaculately presented, three-bedroom, semi-detached family home, with gardens and a driveway. Set in a quiet residential development, in the coastal village of East Wemyss, Fife.

Comprises an entrance hall, living room, dining/kitchen, three flexible bedrooms and a family bathroom.

Ready-to-move-in, highlights include a modern kitchen, a stylish bathroom suite, contemporary flooring and light, tasteful decor throughout. In addition, there is gas central heating, double glazing and good storage, including a loft and a large garden shed.

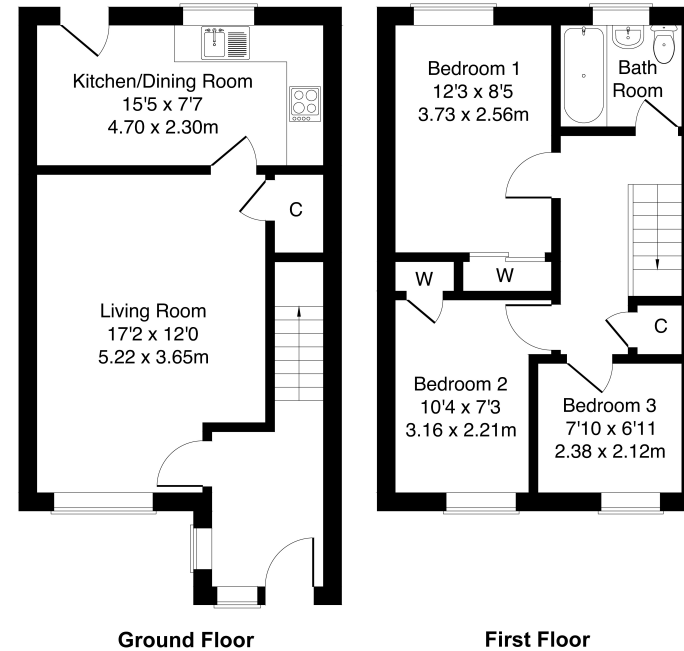
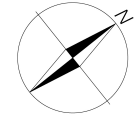
To the front is a lawn, with a paved driveway continuing along the side, whilst the generous rear garden also includes a paved patio and a lawn.

A bright entrance hall leads into a spacious living room on the left, filled with natural light, from a wide, southeasterly-facing window. Finished with light, neutral decor and modern, wood effect flooring, the well-presented reception room includes built-in storage and provides ample space for freestanding, lounge furniture. Accessed directly from the living room, a kitchen is fitted with gloss-white units and marble-effect worktops, and includes a freestanding cooker, a fridge/freezer and a washing machine. Space is available for a dining table and chairs and the kitchen opens, conveniently, onto the rear garden.

Upstairs, accessed from a hall, with storage, are three tastefully presented bedrooms. Two flexible bedrooms are set to the front, whilst the main bedroom enjoys built-in wardrobe storage and rear garden views.

Completing the accommodation, a family bathroom comprises a contemporary three-piece suite, a shower-over-bath, a chrome, ladder-style radiator, vanity storage and tiled splash walls and flooring.

omov⁸ REAL ESTATE **5 Hendrie Crescent, East Wemyss, KY1 4LF**
Estate Agents and Auctioneers
Approximate Gross Internal Area: (807 sq ft - 75 sq m.)



Legal Disclaimer : Floor-plan and measurements are for illustrative guidance only, and not intended to form part of any contract.

Area Description

The popular coastal village of East Wemyss is located on the north coast of the Firth of Forth, a short drive from Kirkcaldy, one of Fife's principal towns. Kirkcaldy provides a wide range of retail, cultural and leisure opportunities, and is home to a museum and an art gallery, as well as the renowned Adam Smith Theatre. Excellent shopping facilities are found in the Fife Central Retail Park, including Sainsbury's and B&Q, with many

high-street names also available in the town centre. A good range of primary and secondary schooling is on offer, with further education provided at the Adam Smith College. The railway station brings Edinburgh and Dundee within easy commuting distance, whilst the A92 allows easy access to the central motorway network and to Edinburgh International Airport.





Our Services

- Free pre-sale property valuations
- Great value fixed estate agency fees
- Extensive buyer matching database
- Purchase and sale conveyancing

Contact Us

0345 646 0208

sales@mov8realestate.com

www.mov8.com

Head Office

6 Redheughs Rigg, Edinburgh, EH12 9DQ

Glasgow Office

77 Renfrew Street, Glasgow, G2 3BZ



Estate Agents and Solicitors

