

High Street

Street, BA16 0EB

COOPER
AND
TANNER



Guide Price
£100,000 Leasehold

🛏 1 🛋 1 🚿 1 EPC G

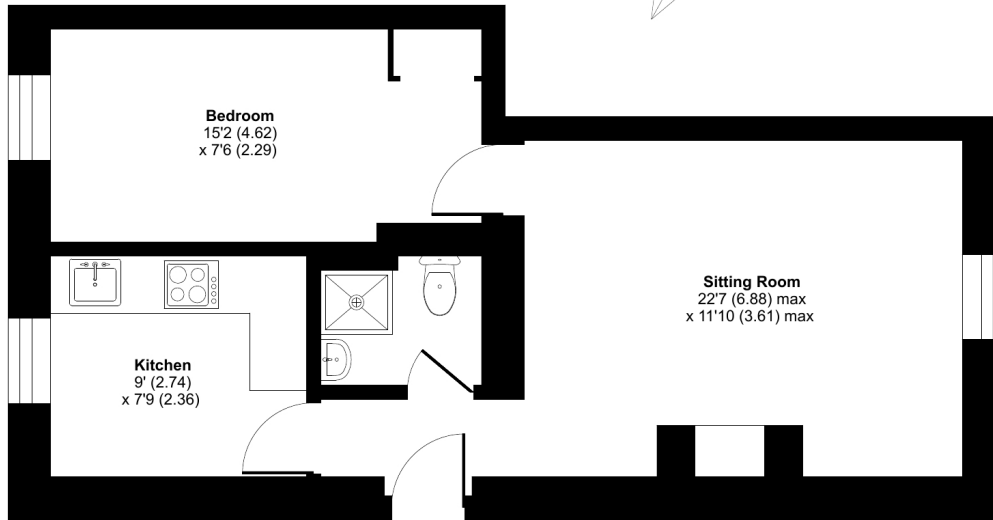
Description

The first-floor property is accessed via an external staircase to the side of the building. The front door opens into a small hallway where there is a door leading to the kitchen, which is well-appointed with an electric cooker, hob, oven, stainless steel sink, and space and plumbing for a washing machine or dishwasher and freestanding fridge/freezer. The shower room has a walk-in shower, low level WC, hand wash basin and extractor fan. The main sitting room is a very good size with a front aspect window, exposed stonework adding a lovely element of character to the property, feature electric wood burner style heater and an electric wall panel heater. From the sitting room a door leads to the well-proportioned double bedroom.

High Street, Street, BA16

Approximate Area = 439 sq ft / 41 sq m

For identification only - Not to scale



FIRST FLOOR



Floor plan produced in accordance with RICS Property Measurement Standards incorporating International Property Measurement Standards (IPMS2 Residential). © rihcom 2022. Produced for Cooper and Tanner. REF: 915332



Features

- First floor (top) apartment
- Central location close to shops and amenities
- Offered for sale with no onward chain
- Perfect for first time buyers
- Well proportioned accommodation throughout

Local Information

- Council Tax Band A
- Tenure Leasehold
- EPC Rating G

STREET OFFICE

Telephone 01458 840416

86, High Street, Street, Somerset BA16 0EN

street@cooperandtanner.co.uk

**COOPER
AND
TANNER**

Important Notice: These particulars are set out as a general outline only for the guidance of intended purchasers and do not constitute, nor constitute part of, an offer or contract. All descriptions, dimensions, reference to condition and necessary permissions for use and occupation, warranties and other details are given without responsibility and any intending purchasers should not rely on the matters stated or representations of fact but must satisfy themselves by inspection or otherwise as to the correctness of each of them.

