

FOR SALE

£225,000 Leasehold



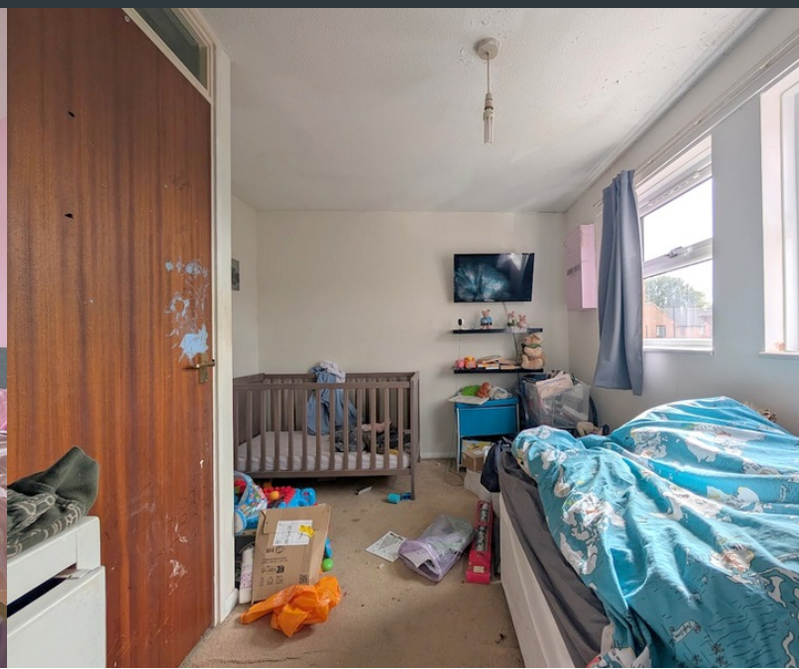
Elsworth Close, Feltham, Greater London. TW14 8SF

- Entrance Hall
- Modern Kitchen
- Lounge/ Diner
- Rear Garden
- Two Double Bedrooms
- Modern Shower Room
- Allocated Parking Space
- Quiet Road
- Central Location
- Highly Recommended



PROPERTY DESCRIPTION

60% SHARED OWNERSHIP A spacious and recently refurbished mid terrace home with allocated parking space, located in the ever popular Grove Village, providing easy access to local schools, high street and public transport links. The property has had a new boiler, kitchen and bathroom in recent years. Contact our office now for more information.



ROOM DESCRIPTIONS

Entrance

Approached via a front aspect UPVC door, laminate flooring, stairs leading to landing and door to;

Kitchen

3.62m x 1.63m (11' 11" x 5' 4") Front aspect double glazed windows, a modern range of eye and base level units with integrated combi boiler, drainage sink, oven, hob, extractor fan and space for white goods.

Lounge/ Diner

4.81m x 3.56m (15' 9" x 11' 8") Rear aspect double glazed French doors to garden, large under stair storage cupboard, laminate flooring and wall mounted radiator.

First Floor Landing

Built in storage cupboard, carpeted flooring, loft hatch and doors to all rooms.

Bedroom One

3.21m x 3.56m (10' 6" x 11' 8") Dual rear aspect double glazed windows, carpeted flooring and wall mounted radiator.

Bedroom Two

2.95m x 3.57m (9' 8" x 11' 9") Dual front aspect double glazed window, carpeted flooring and wall mounted radiator.

Shower Room

2.11m x 1.72m (6' 11" x 5' 8") Walk in rainfall shower, low level WC, pedestal wash basin, heated towel rail, extractor fan and tiled floor/ walls.

Rear Garden

Artificial grass and patio for garden furniture.



