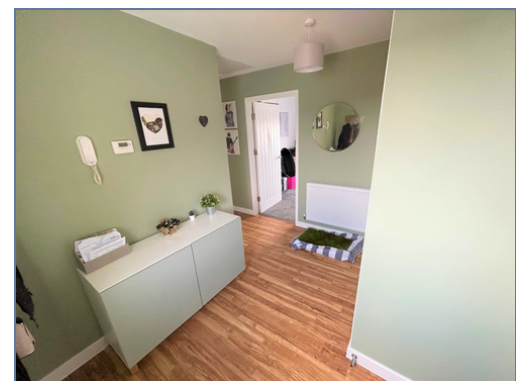




**Flat 11, 177 Barrosa Way, Whitehouse,
Milton Keynes, Buckinghamshire, MK8 1BY**

£98,000 Leasehold

- Two Bedroom Apartmen
- Open Plan Living Accommodation
- Sought After Area
- Good Condition Throughout
- Allocated Parking
- EPC- B
- Council Tax Band-B
- £6,000 Fixture and fittings charge
- Thrive housing association
- Yearly Ground rent £325





This stylish open plan two bedroom apartment in Whitehouse, Milton Keynes is an exceptional example of modern and comfortable living. As you step inside the apartment, you will be greeted with a spacious and airy living area that seamlessly blends the living room, dining area, and kitchen into one cohesive space. The open-plan design ensures that the apartment feels bright and welcoming, with natural light flooding in from large windows that provide panoramic views of the surrounding area. The apartment boasts two well-proportioned bedrooms, each designed with comfort and style in mind and finally the family bathroom.

Ground Floor



Floor plans are for layout purposes only. Measurements are approximate and subject to inaccuracies. Plan produced using PlanUp.

40% Shared ownership with Thrive Housing association.

Located in the sought-after Whitehouse development in Milton Keynes, this apartment is surrounded by beautiful green spaces, excellent transport links, and a wealth of local amenities. Whether you're a young professional looking for a stylish and convenient home or a family seeking a comfortable and modern living space, this two-bedroom apartment is the perfect choice.

Monthly rent & service charge £429

Yearly Ground rent £325

Disclaimer

Whilst we have endeavoured to prepare our sales particulars accurately none of the services, appliances or equipment have been tested. A buyer should satisfy themselves on such matters prior to purchase. Any measurements or distances mentioned in these particulars are for guide reference only. If such particulars are fundamental to a purchase, buyers should rely on their own enquiries. All enquiries should be directed to Elevation Estate Agents in the first instance.