



T: 01909 509001
E: info@bartropanddilks.co.uk
W: www.bartropanddilks.co.uk
A: 78 Bridge Street, Worksop, S80 1JA

FOR SALE

£245,000

55 Northfield Drive, Woodsetts, Worksop, Nottinghamshire. S81 8QF



Only by viewing can the prospective buyer appreciate the high quality of fixtures and fittings on offer in this well presented and decorated three bedroom extended semi detached home that has gas central heating and uPVC double glazed windows. Of interest for first time buyers or growing families, the property is set within this much sought after village that provides access to the M1 and A1 motorway networks. Being much improved by the current owners, the accommodation comprises of; entrance hallway, lounge with fitted Media wall, delightful modern fitted dining kitchen with leads through to the sitting room overlooking the rear garden. On the first floor; three bedrooms, white fitted modern bathroom suite. Outside; ample block paved driveway to the front, attached garage with utility area and W.C. Enclosed rear garden with lawn, patio, summerhouse and garden sheds. Viewing Recommended.

Ground Floor

Entrance Hallway

With entrance door, central heating radiator, stairs to the first floor.

Lounge 3.53m x 3.33m (11' 7" x 10' 11")

With a fitted Media wall and electric fire, front facing window, central heating radiator, double doors to the dining kitchen.

Dining Kitchen 5.49m x 3.02m (18' 0" x 9' 11")

A most stunning modern kitchen with wall and base units, worksurfaces, bowl and half sink unit with mixer tap, gas hob with extractor above and electric oven below, ceiling Bluetooth speakers, integrated dishwasher, fridge and freezer, storage, central heating radiator, spot lighting, rear facing window, open access to the sitting room.

Sitting Room 3.18m x 3.14m (10' 5" x 10' 4")

With side facing French doors, central heating radiator, spot lighting to the ceiling.

First Floor

Landing

With a side facing window, loft access and loft ladder with the loft being boarded.

Bedroom One 3.49m x 2.99m (11' 5" x 9' 10")

With a rear facing window, central heating radiator.

Bedroom Two 3.57m x 3.31m (11' 9" x 10' 10")

With a front facing window, central heating radiator, storage housing the wall mounted gas fired central heating boiler.

Bedroom Three 2.50m x 2.26m (8' 2" x 7' 5")

With a front facing window, central heating radiator.

Bathroom

Modern refitted suite with panelled bath, wash hand basin with vanity unit, low flush w.c, panelled walls, heated towel rail, rear facing window.

Outside

Driveway

Ample block paved driveway to the front.

Garage

With electric up and over door, utility area with plumbing for an automatic washing machine and dryer space.

There is also an enclosed modern W.C with low flush w.c, wash hand basin.

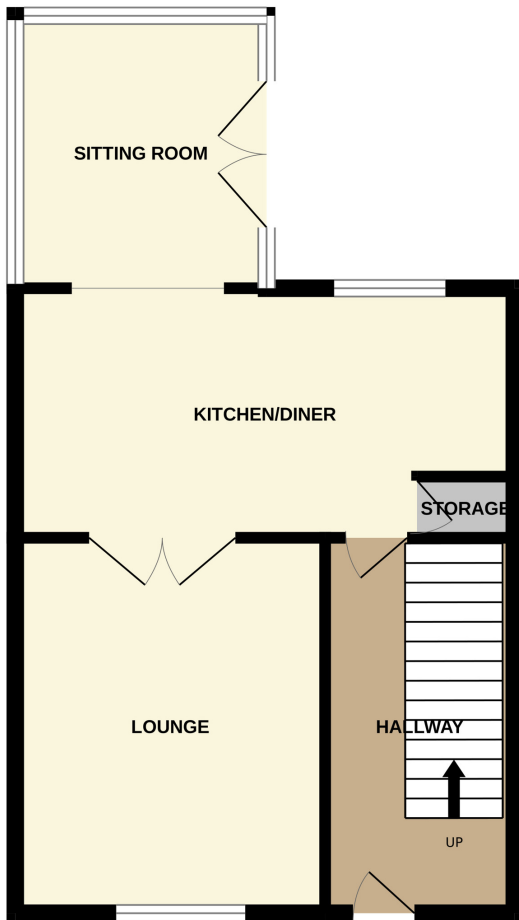
Rear Garden

Enclosed rear garden with patio and lawn. Garden sheds and summerhouse.

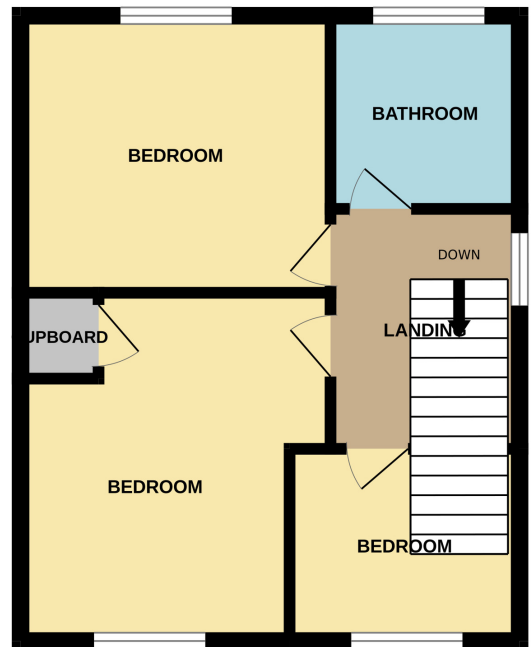




GROUND FLOOR



1ST FLOOR



Whilst every attempt has been made to ensure the accuracy of the floorplan contained here, measurements of doors, windows, rooms and any other items are approximate and no responsibility is taken for any error, omission or mis-statement. This plan is for illustrative purposes only and should be used as such by any prospective purchaser. The services, systems and appliances shown have not been tested and no guarantee as to their operability or efficiency can be given.
Made with Metropix ©2025